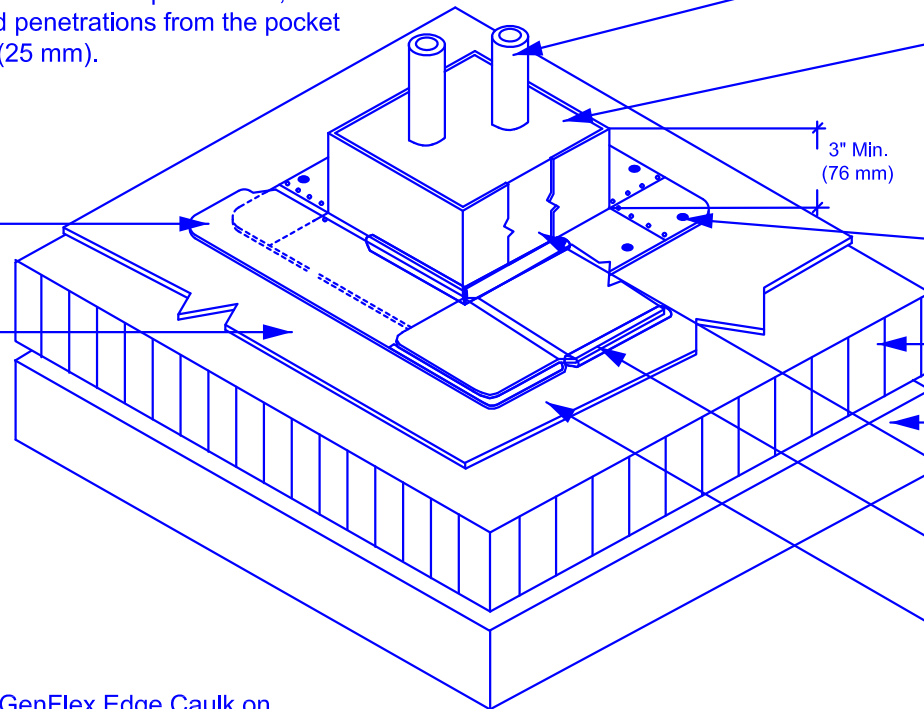


Metal Pitch Pan with solid corners, 3" (76 mm) wide flange with continuous, rounded corners and soldered metal laps. For pourable sealer pockets containing more than one penetration, clearance between all penetrations and penetrations from the pocket edges must be minimum 1" (25 mm).

GenFlex Bar Cover Tape  
See Note #2

GenFlex EPDM Membrane



Existing Pipe(s)  
Must be Free From All Contaminants.

GenFlex Pitch Pan Sealer 2" Min. (51 mm)  
Mounded and Troweled to Shed Water.

3" Min.  
(76 mm)

Approved Fasteners  
Each 6" o.c.  
(152 mm)

Approved Substrate

GenFlex ISO

Filler (Grout Type)

Continuous High Profile Edge Caulk  
See Note #1

GenFlex Primer

1. Apply a high profile bead of GenFlex Edge Caulk on the outside edge of the completed seam.
2. When using GenFlex Seam Tape and GenFlex Bar Cover Tape, first clean the membrane with GenFlex EPDM Cleaner. Then apply GenFlex Primer.

MAXIMUM WARRANTY: **20 Years**



**Watertight Pitch Pan**

EPDM Systems

ACCEPTABLE SYSTEMS:  
All Systems

ISSUE / REVISION  
DATE:

6-24-2015

NOT TO SCALE

DETAIL NO.

**E-9.02**