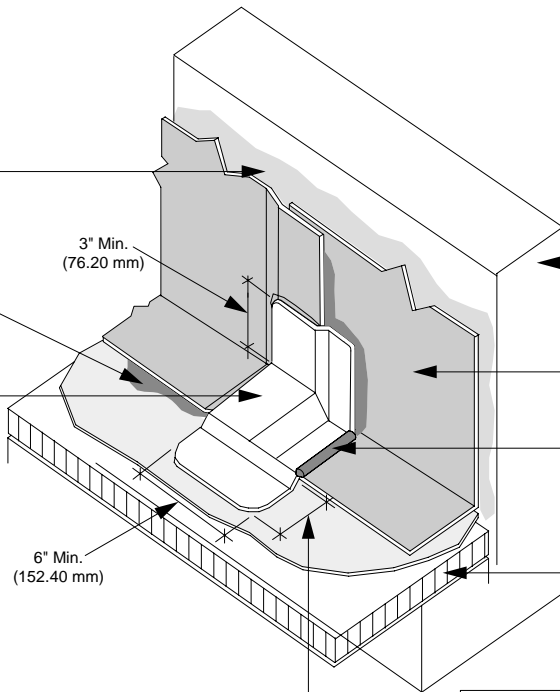


GenFlex EPDM
Bonding
Adhesive
See Note #1

GenFlex G-400
Seam Adhesive

7" (177.80 mm)
Peel & Stick
Flashing



Approved
Substrate

GenFlex Membrane

High Profile Edge
Caulk Continuous
Around Entire Strip

GenFlex ISO

6" Min.
(152.40 mm)

3" Min.
(76.20 mm)

1. All parapet walls and roof curbs must be suitable for flashing, i.e. clean, tight, smooth, no cracks, etc.

GenFlex
Roofing Systems

10/06

**Vertical Seam in Base Flashing
Using Cured EPDM**

Detail #: E-3.01

EPDM Systems