

PRODUCT DATA SHEET

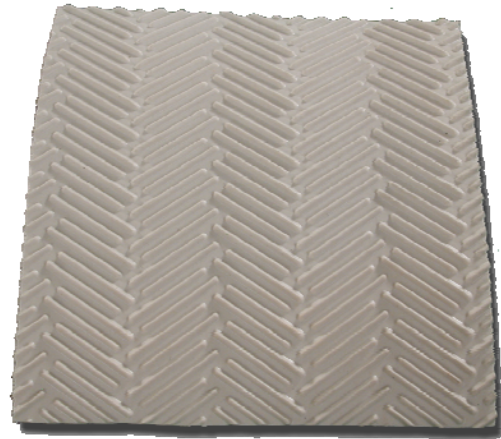
GenFlex TPO Heat Weldable Walkway Pad (Light Grey)

DESCRIPTION

GenFlex TPO Heat Weldable Walkway Pads are designed to protect the TPO membrane from damage in areas exposed to frequent foot traffic and other potential rooftop hazards. Walkway pads should be installed as required by current GenFlex TPO specifications.

PHYSICAL PROPERTIES

PROPERTY	TEST METHOD	TYPICAL VALUES
Color	n/a	Light Grey
Thickness	ASTM D 412	0.156" (4 mm)
Grain	n/a	Tuff Trac
Pad Dimensions	n/a	30" x 50' x 5/32" (762 mm x 15.2 m x 4 mm)
Specific Gravity	ASTM D 297	1.32 ± 0.03
Tensile	ASTM D 412 (Die C)	350 psi (2143 kPa)
Elongation	ASTM D 412	300%
Tear Resistance	ASTM D 624 (Die C)	100 lb (445 N)
Tabor Abrasion	H18/500 g/1000 rev.	56.7 oz, 0.03" (2.0 g, 0.6 mm)
Hardness-Shore A	n/a	85 ± 5
Heat Aging - Tensile - Elongation	ASTM D 573 ASTM D 412 ASTM D 412	% of Original - 30 max. ± 15 max.



PRODUCT DATA

SIZE	QUANTITY	PRODUCT #
30" x 50' (762 mm x 15.2 m)	1 Roll	W590030096

LEED INFORMATION

Recycled Content
Post Consumer 0%
Post Industrial 0%

INSTALLATION

1. It is recommended that the walkway pads be installed in sections that are not longer than 10' (3 m) in length. This is recommended to allow proper water drainage and to prevent water damming.
2. Each 10' (3 m) section should be separated from the next 10' (3 m) section by about 2" (51 mm) to allow for drainage.
3. All walkway pads should be kept at least 2" (51 mm) from any field fabricated seams, around penetrations, and all roof top units.
4. The attachment of the walkway pad to the TPO membrane can be accomplished by heat welding it to the field membrane.

APPLICATION PRECAUTIONS

The owner is responsible for maintaining walkways in the following specific areas: At all access points (ladders, hatches, doorways, etc.) to the roof, around all mechanical equipment which will require maintenance, as a walkway system on roofs subjected to traffic more frequently than once a month.

GenFlex TPO Heat Weldable Walkway Pads are considered to be a maintenance item and are the responsibility of the building owner.

GenFlex TPO Heat Weldable Walkway Pads are not covered under the terms and conditions of the warranty.

STORAGE

Store GenFlex TPO Heat Weldable Walkway Pads away from sources of punctures and physical damage.

SHELF LIFE

Not applicable

PRECAUTIONARY DATA

Take care when moving, transporting, and handling, etc., to avoid sources of punctures and physical damages.

Isolate waste products such as petroleum products, greases, oils (mineral and vegetable), and animal fats from the GenFlex TPO membrane.

Assure the structural decking will support the loads incurred by the material stored on roof top. The deck load limitations should be specified by the project designer.

Contact GenFlex Roofing Systems Technical Department for specific recommendations.

Refer to Material Safety Data Sheet for additional information.