

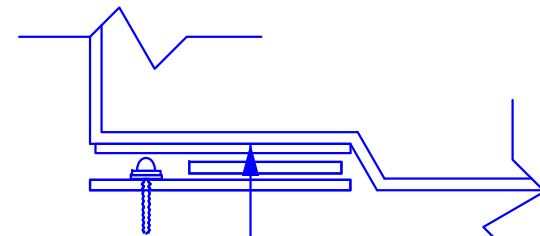
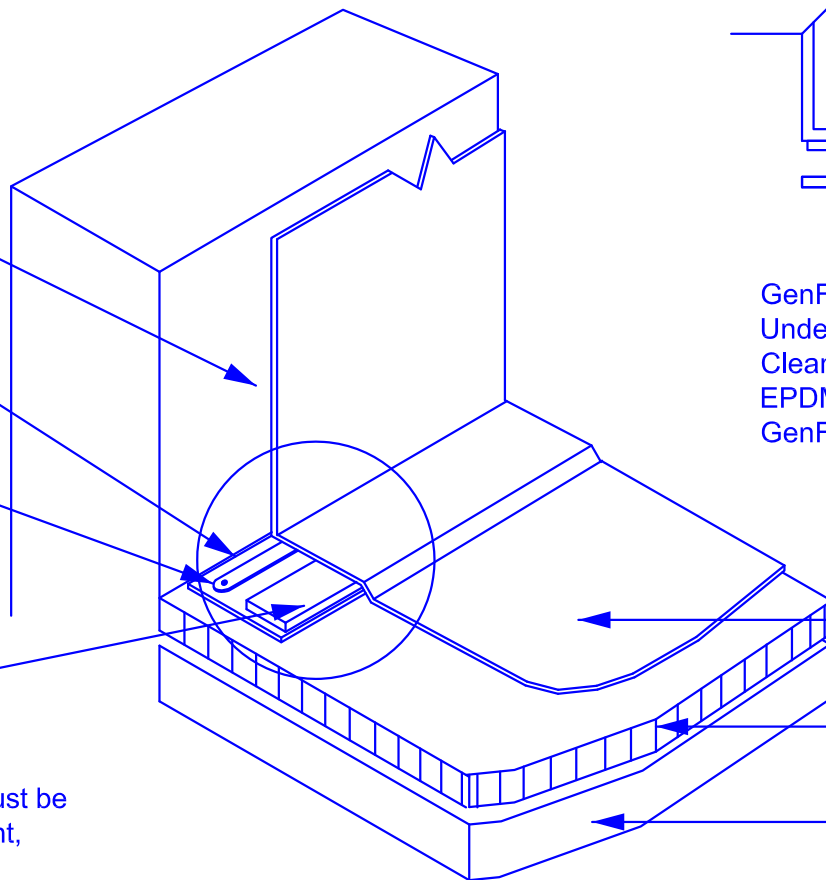
GenFlex Bonding Adhesive
See Note #1

1" (25 mm) Gap Required
Between Edge of Bar / Disc
and Edge of Reinforced
EPDM Strip

GenFlex 2" (51 mm) Plate or Bar
Anchor with Approved Fasteners
Each 12" o.c. (305 mm). Fastener
Length Not to Exceed 6" (152 mm)
See Note #2

GenFlex 6" (152 mm) Wide
Peel & Stick RPS Strips
See Note #3

1. All parapet walls and roof curbs must be suitable for flashing, e.g. clean, tight, smooth, no cracks, etc.
2. Polymer batten strips cannot be used for attachments into masonry wall substrates. Use only on smooth surfaces, e.g. wood or insulation.
3. Instead of Peel & Stick RPS strip, standard RPS strip may be used in conjunction with GenFlex G-400 Seam Adhesive, following GenFlex Seam Adhesive application methods.



GenFlex Primer Applied to
Underside of EPDM. Thoroughly
Clean the EPDM with GenFlex
EPDM Cleaner Prior to Applying
GenFlex Primer.

GenFlex EPDM Membrane

GenFlex ISO
4" Max. (102 mm) From Deck
without Wood Nailer

Approved Substrate



Horizontally Secured Peel & Stick RPS

EPDM Systems

ACCEPTABLE SYSTEMS:
Fully Adhered & Mechanically Attached

MAXIMUM WARRANTY: **10 Years**

ISSUE / REVISION
DATE:
6-22-2015

NOT TO SCALE

DETAIL NO.

E-2.08