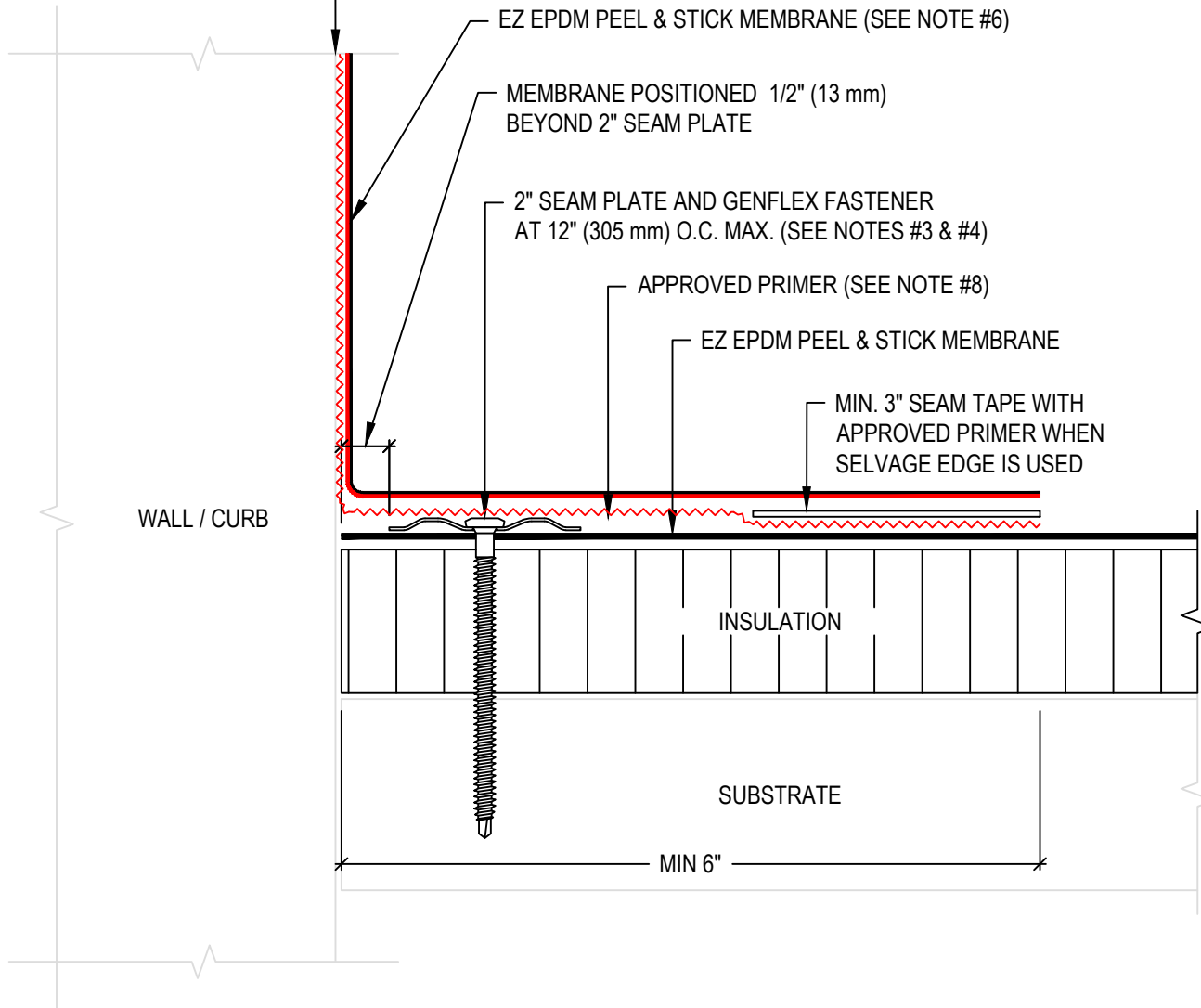


**USE APPROPRIATE  
TERMINATION**



NOTE:

1. REFER TO THE GENFLEX™ WEBSITE FOR MOST CURRENT INFORMATION.
2. MAXIMUM 10" (254 mm) LONG FASTENERS. (NOTE: WOOD BLOCKING MAY BE SUBSTITUTED FOR INSULATION TO REDUCE FASTENER LENGTH REQUIREMENT).
3. IN CASE OF OBSTRUCTION REFER TO DETAIL EPDM EZE-PS-BT-05.
4. REFER TO EPDM-E-4.03 & EPDM-E-5.03 FOR MEMBRANE SECUREMENT AT CORNERS.
5. REFER TO GENFLEX PDS SHEETS AND APPLICATION GUIDES FOR LIST OF COMPATIBLE SUBSTRATES WITH EZ EPDM PEEL & STICK MEMBRANE.
6. STANDARD EZ EPDM MEMBRANE WITH APPROPRIATE MEMBRANE ADHESIVE MAY BE USED AS WALL FLASHING IN LIEU OF EZ EPDM PEEL & STICK MEMBRANE.
7. ALL EDGES WITH SA ADHESIVE EXPOSED MUST BE STRIPPED IN WITH 6" GENFLEX COVER TAPE.
8. APPROVED PRIMERS INCLUDE: GENPRIME OR ALL PURPOSE LVOC PRIMER



**BASE TIE-IN WITH 2" SEAM PLATES  
FASTENED TO DECK**

ACCEPTABLE SYSTEMS: EZ EPDM PEEL & STICK™ SELF ADHERED

(800) 443-4272 www.genflex.com

MAXIMUM WARRANTY: 20 Years

ISSUE / REVISION  
DATE:

07/24/2023

NOT TO SCALE

DETAIL NO.

EZE-PS-BT-01