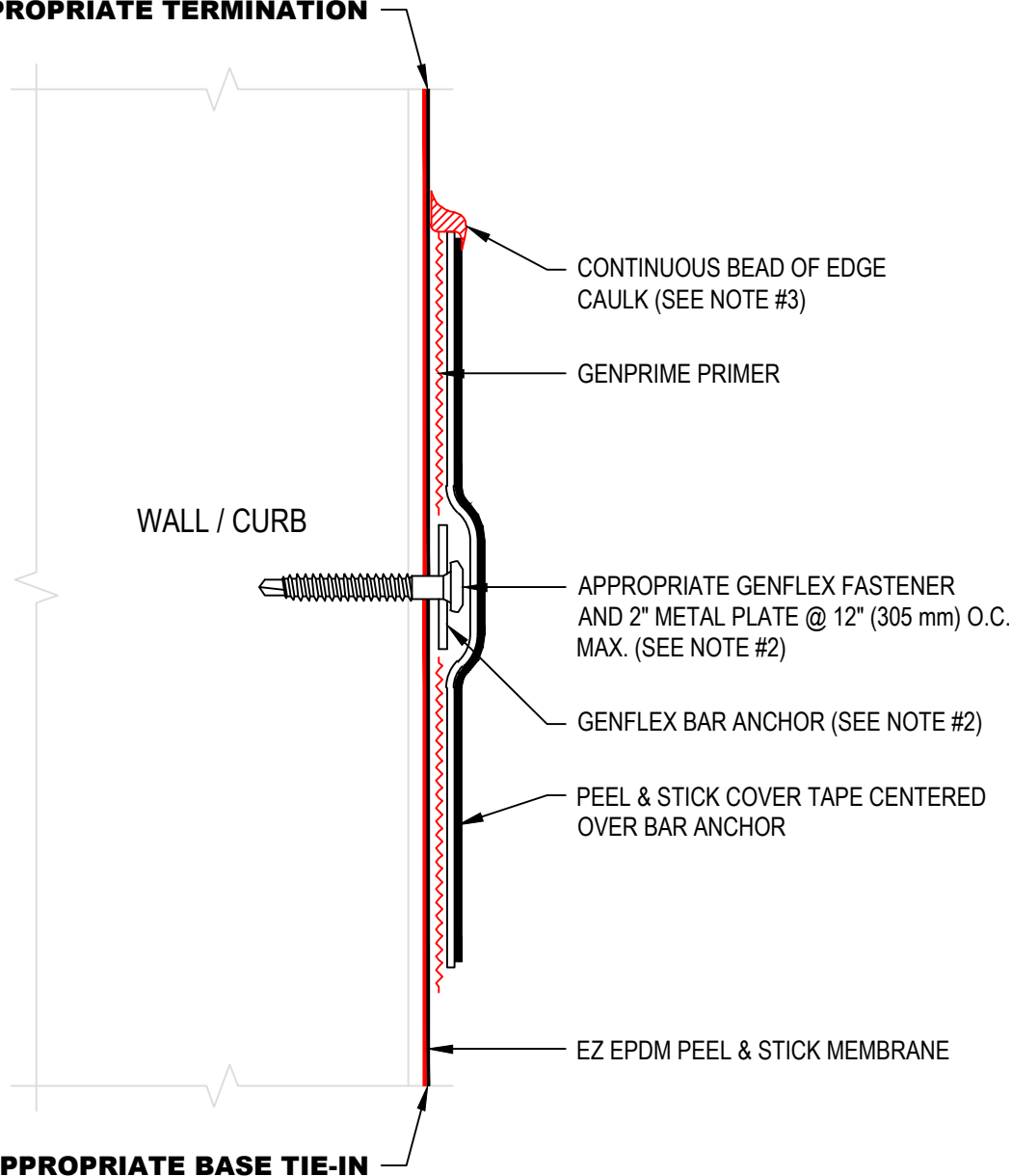


USE APPROPRIATE TERMINATION



WALL / CURB

CONTINUOUS BEAD OF EDGE CAULK (SEE NOTE #3)

GENPRIME PRIMER

APPROPRIATE GENFLEX FASTENER AND 2" METAL PLATE @ 12" (305 mm) O.C. MAX. (SEE NOTE #2)

GENFLEX BAR ANCHOR (SEE NOTE #2)

PEEL & STICK COVER TAPE CENTERED OVER BAR ANCHOR

EZ EPDM PEEL & STICK MEMBRANE

USE APPROPRIATE BASE TIE-IN

NOTE:

1. REFER TO GENFLEX™ WEBSITE FOR MOST CURRENT INFORMATION.
2. POLYMER OR METAL BAR ANCHOR ACCEPTABLE FOR WOOD OR METAL SUBSTRATE. METAL BAR ANCHOR MUST BE USED WITH MASONRY SUBSTRATE.
3. REFER TO EZE-PS-LS-04 FOR SEAM EDGE TREATMENT.
4. IF INTERMEDIATE ATTACHMENT IS REQUIRED, COMPLETE AS FOLLOWS:
 -UP TO 5' (1.5 m) WALL HEIGHT - NONE REQUIRED.
 -5' (1.5 m) - 10' (3 m) WALL HEIGHT - ONE ATTACHMENT AT 1/2 THE WALL HEIGHT.
 -ABOVE 10' (3 m) - ONE ATTACHMENT EVERY 3' (1 m).
5. THERE ARE SOME CONDITIONS WHICH DO NOT REQUIRE INTERMEDIATE ATTACHMENT. REFER TO GENFLEX APPLICATION SPECIFICATIONS FOR ADDITIONAL INFORMATION.
7. APPROVED PRIMERS INCLUDE GENPRIME AND ALL PURPOSE LVOC PRIMER.
8. APPROVED PRIMER REQUIRED ON ALL VERTICAL SURFACES.



INTERMEDIATE WALL FLASHING ATTACHMENT WITH PEEL & STICK COVER TAPE

ACCEPTABLE SYSTEMS: EZ EPDM PEEL & STICK™ SELF ADHERED

MAXIMUM WARRANTY: 20 Years

ISSUE / REVISION DATE:

07/28/2023

DETAIL NO.

EZE-PS-T-10

NOT TO SCALE

(800) 443-4272 www.genflex.com