

GenFlex Roofing Systems

[Company Name]

[Presentation Date]

[Presenter Name 1]

Presenter 1 Title

[Presenter Name 2]

Presenter 2 Title



Objectives

- ▼ The objectives for this training session are to familiarize you with:
 - ▼ Internal and External GenFlex Personnel
 - ▼ Warranty Information
 - ▼ Products Offered
 - ▼ System Types



So, who is GenFlex?



GenFlex History

- ▼ The GenFlex brand was created from General Tire in 1980 as a building products division.
- ▼ GenFlex has sold several **BILLION** square feet of roofing membrane since 1980.
- ▼ GenFlex currently has approximately 35,000 active warranties on roof installations.
- ▼ In September 2006, GenFlex was purchased by Firestone Diversified Products.

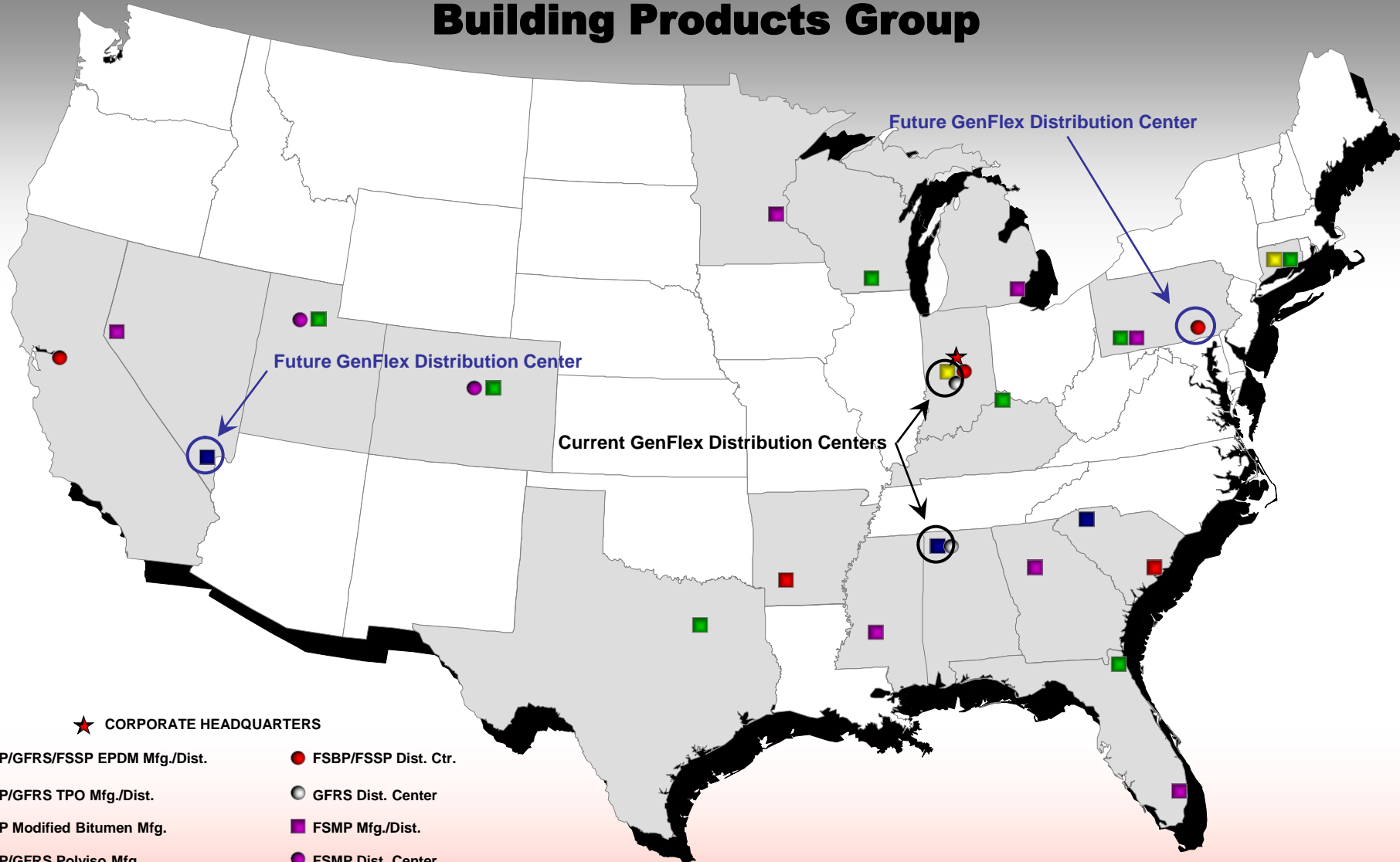


GenFlex Milestones / Firsts

- ▼ GenFlex has been one of the most innovative companies in the industry, having pioneered many of the technologies that have been adopted industry-wide.
 - ▼ Seam Tapes
 - ▼ Dual Weld Thermoplastics Systems
 - ▼ Peel & Stick TPO Membranes



Building Products Group



Firestone
BUILDING PRODUCTS

www.firestonebpco.com

GenFlex

www.genflex.com

Firestone
METAL PRODUCTS
UNA-CLAD

GenFlex

Single Ply Solutions for Over a Quarter Century™



The NEW GenFlex.com



[Member Area](#) | [Meet GenFlex](#) | [What's New](#) | [Talk To Us](#) | [Get The Weather](#)

[OUR PRODUCTS](#)

[DISTRIBUTORS](#)

[CONTRACTORS](#)

[OWNERS](#)

[SPECIFIERS](#)

[TECHNICAL INFO](#)



Its Common Sense On A Roll, And We Provide Miles Of It.
Good, honest roofing materials at reasonable prices the way you deserve it.

EPDM

TPO

POLYISO



GenFlex Welcomes You.

THANK YOU for visiting our **BRAND NEW Website!**

GenFlex Roofing Systems is a leading, full-line supplier of high quality single-ply roofing products for the commercial roofing market. Our products have a strong history. Roofing has long defined who we are and what we do. With nearly 30 years in the single-ply industry, we bring native expertise to every product, system and accessory we offer.

Find GenFlex Products

[Distributor Locator](#)

[Contractor Locator](#)

Name:

State:

Zip:

[» Locate](#)

The Winner's Circle



Get the latest updates on Winner's Circle™ information here.

[» Learn More](#)

[Top Technical Downloads](#)



Single Ply Solutions for Over a Quarter Century™



On the ***NEW GenFlex.com***, you can:

- ▼ Meet the GenFlex Team
- ▼ Get a Google Map and directions to your nearest GenFlex Distributor or Contractor
- ▼ Request a Classroom/Hands-On Training
- ▼ Learn all about the GenFlex Winner's Circle and view up-to-the-minute updates
- ▼ Sign up to receive E-Bulletins
- ▼ Link to industry organizations
- ▼ Read about current events in the industry
- ▼ View and request our new literature
- ▼ *And, much, much more!*



GenFlex Warranty Requirement Guide

- ▼ Summary descriptions for each warranty and system type are listed in the GenFlex Warranty Requirement Reference Guide.
- ▼ The reference information in this guide is based on requirements for applications subject to enhancement following review by the Technical Department.
- ▼ This information can be viewed, downloaded, and printed for your use by visiting www.genflex.com.



NOTE:

Standard Applications:

This guide applies to projects with a maximum height of 50' from the ground, a maximum deck slope of 3°/12", a standard warranty wind speed of 54 MPH, and a maximum warranty period of 15 years.

Special Applications:

GenFlex does warrant roof applications on buildings taller than 50', with deck slopes greater than 3°/12", wind speeds greater than 54 MPH, and for warranty periods greater than 15 years, however, projects outside of the parameters listed in the Standard Application paragraph above are considered Special Applications which require coordination with the GenFlex Technical Department.

The information in this guide should be considered base requirements for special applications subject to enhancement following review by the Technical Department. Enhancements, when deemed necessary, will depend on the circumstances of the specific project. Contact your GenFlex Technical Coordinator at 1-800-443-4272, option 2 for assistance in defining the specific project requirements for special applications prior to bid.

Effective August 1, 2008
(Supersedes all previous versions)



Single Ply Solutions for Over a Quarter Century™



Contractor Classifications

▼ Licensed

- ▼ New GenFlex Contractors with verifiable single-ply experience



EPDM & TPO Warranties

- ▼ Licensed Contractors may purchase:
 - ▼ Authorized Contractors may purchase:
 - ▼ 10, 15, 20 Year Material Only Warranties
 - ▼ No inspection required
 - ▼ Prorated material warranty coverage extends to GenFlex brand products
 - ▼ 5, 10, 15, 20 Year System Warranties
 - ▼ Roofing systems must be installed to current GenFlex specifications
 - ▼ Inspection required

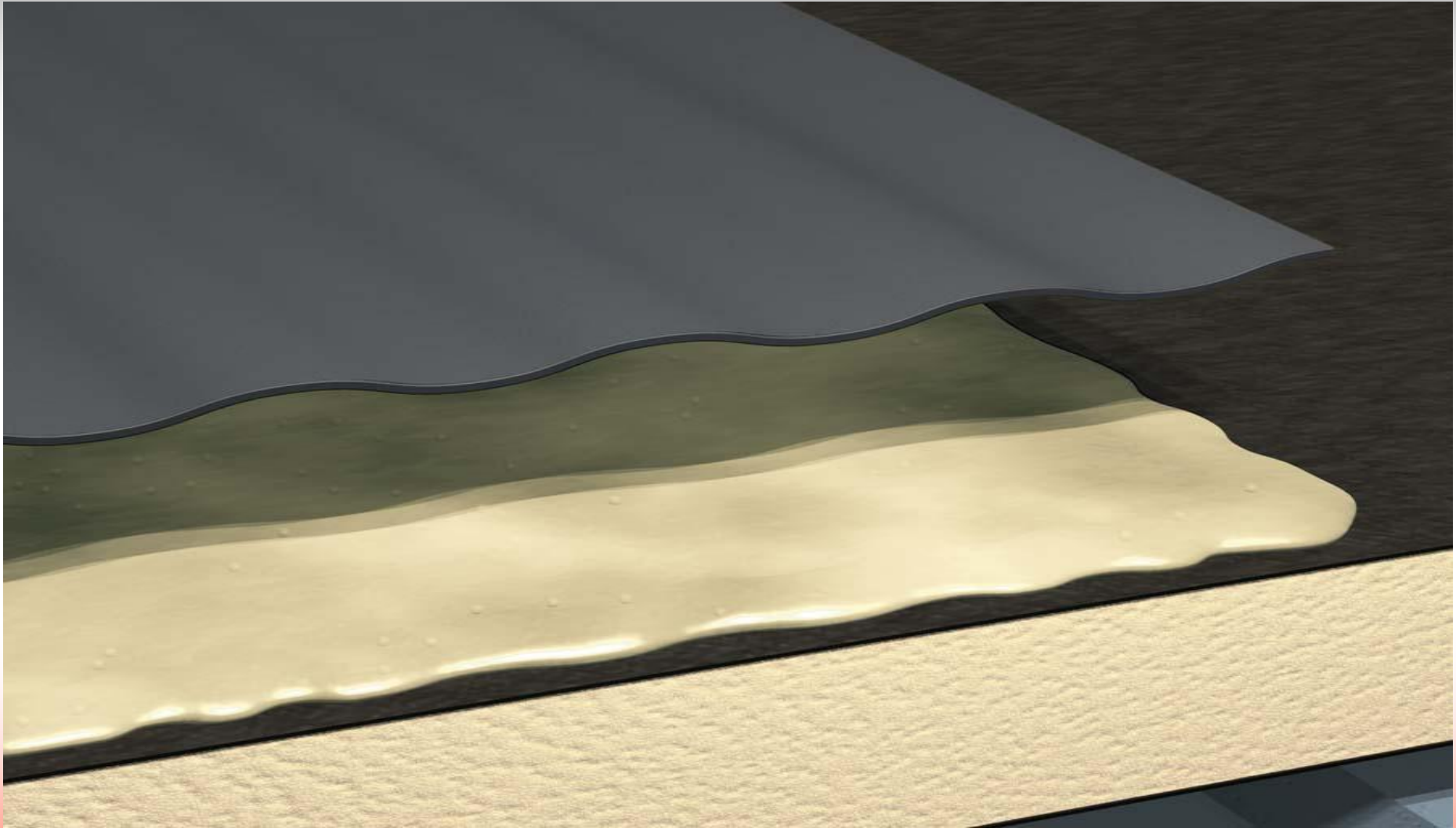


GenFlex Single Ply Roof Assemblies

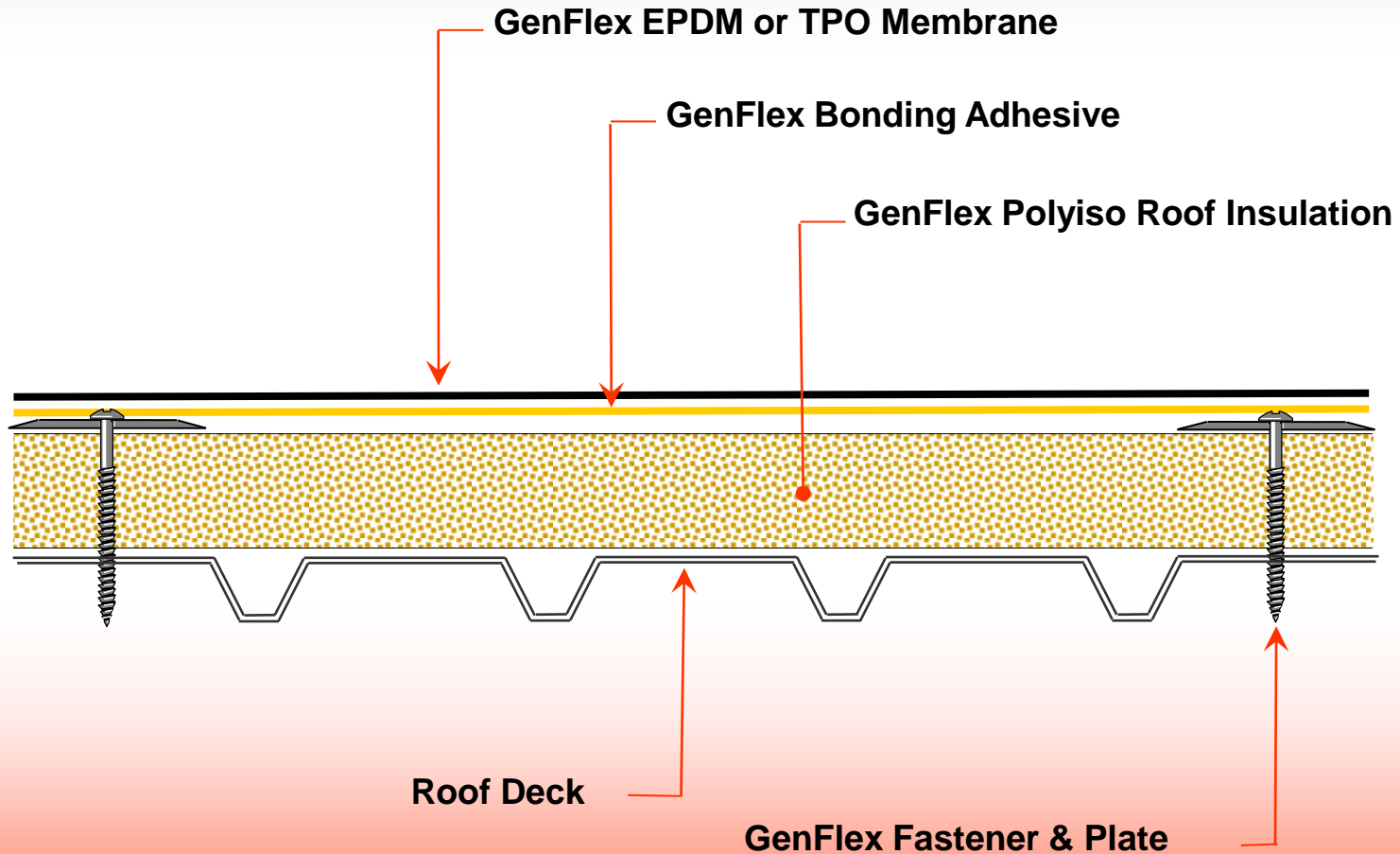
- Fully Adhered**
- Ballasted**
- Mechanically Attached**



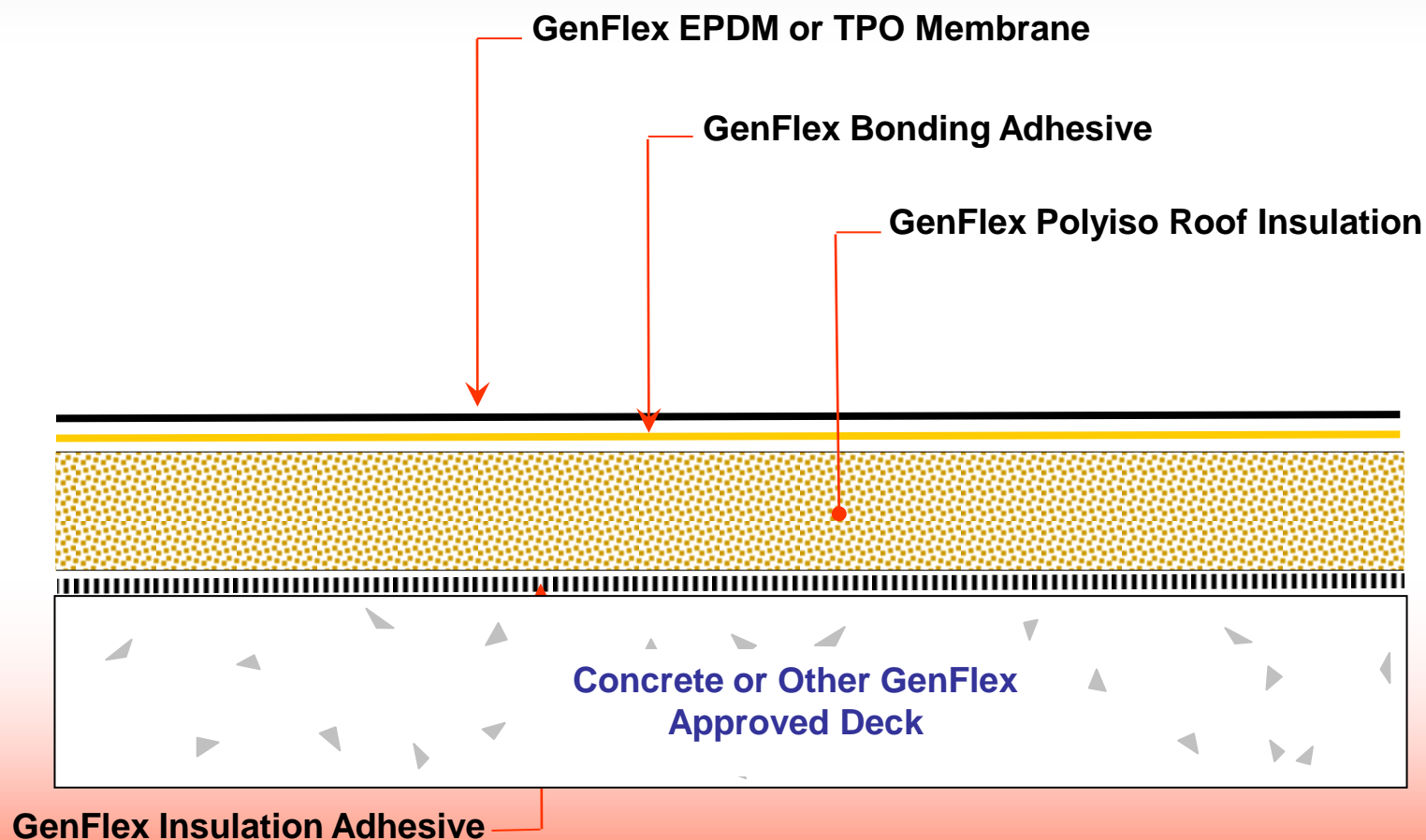
Fully Adhered



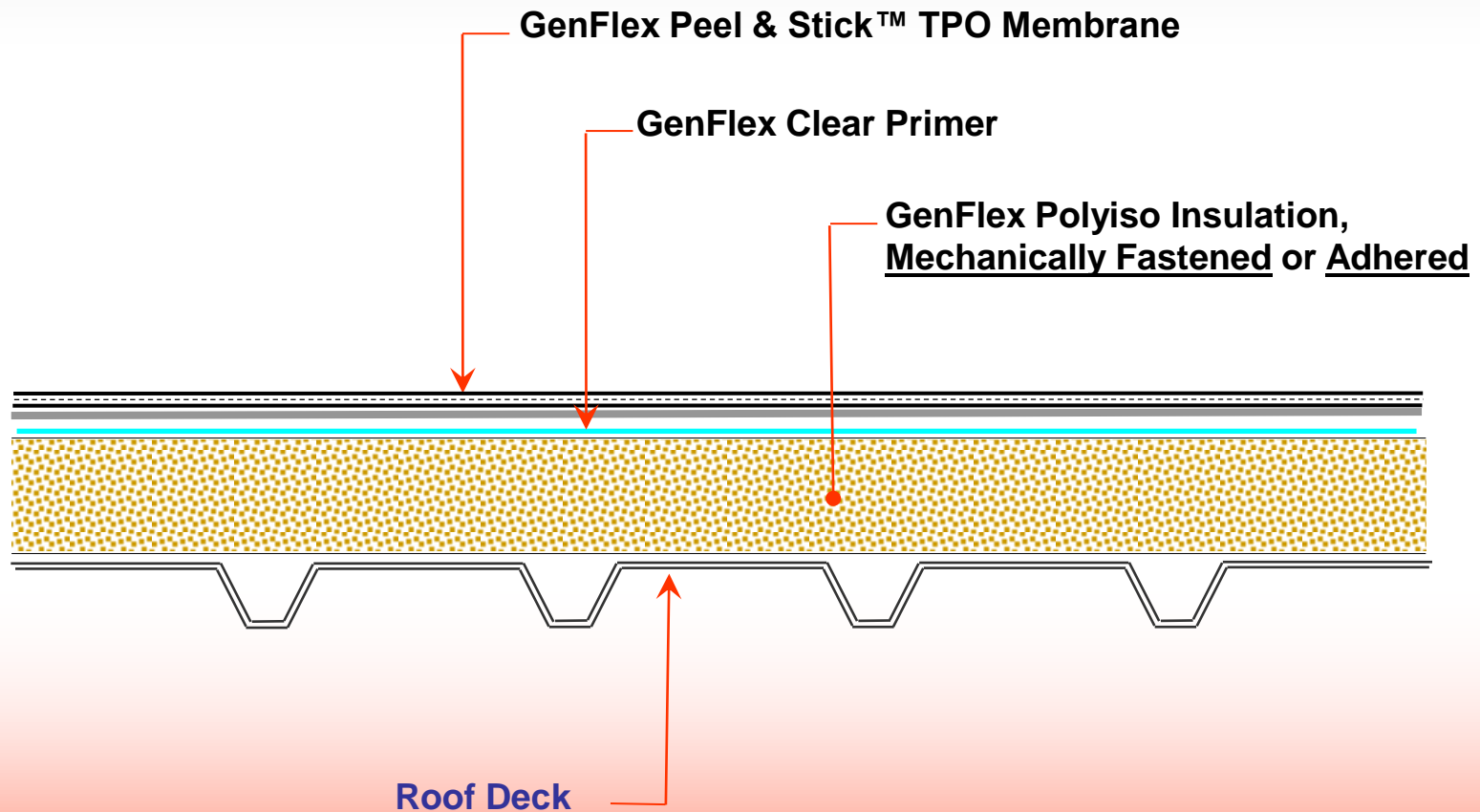
Fully Adhered Mechanically Fastened Insulation



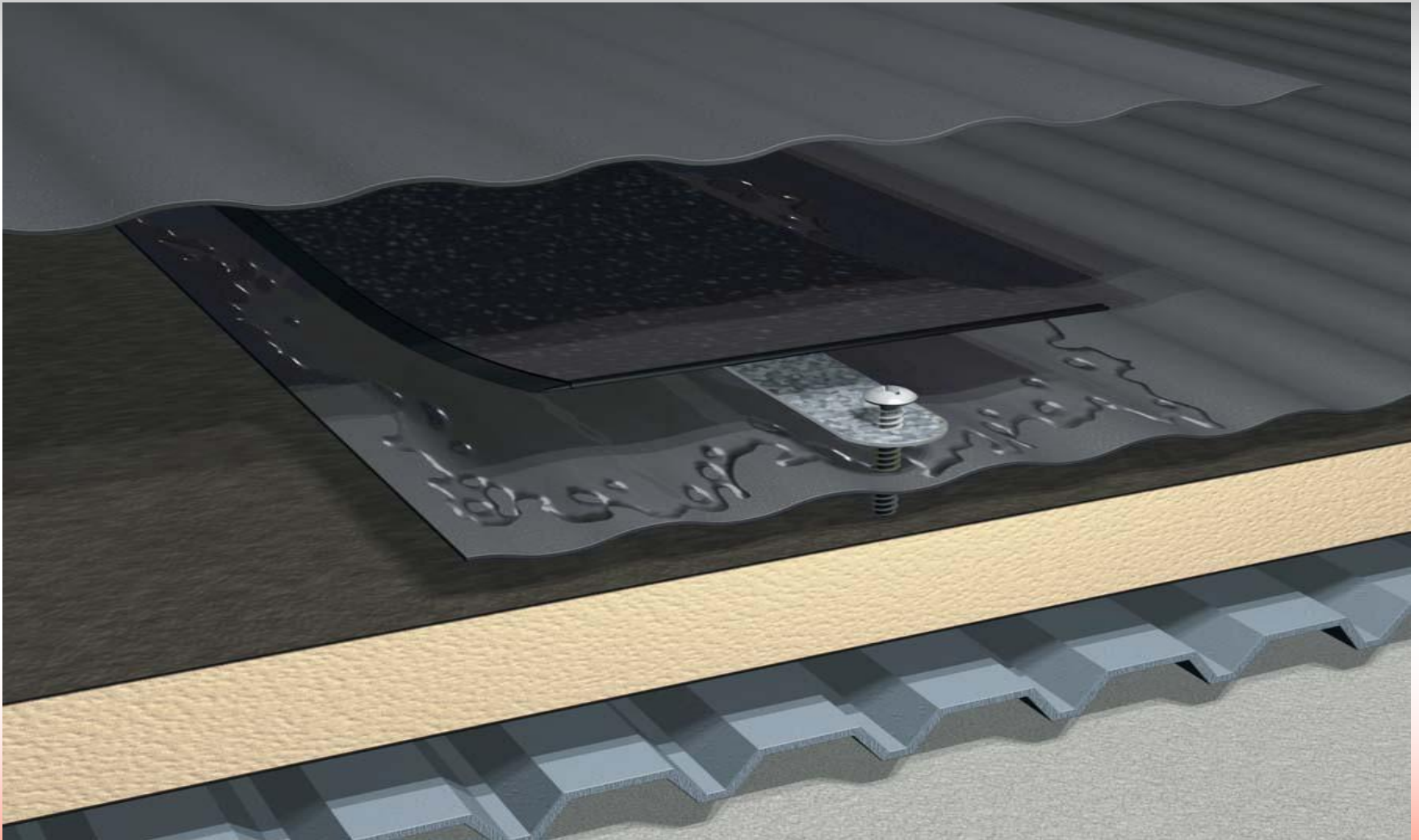
Fully Adhered Adhered Insulation



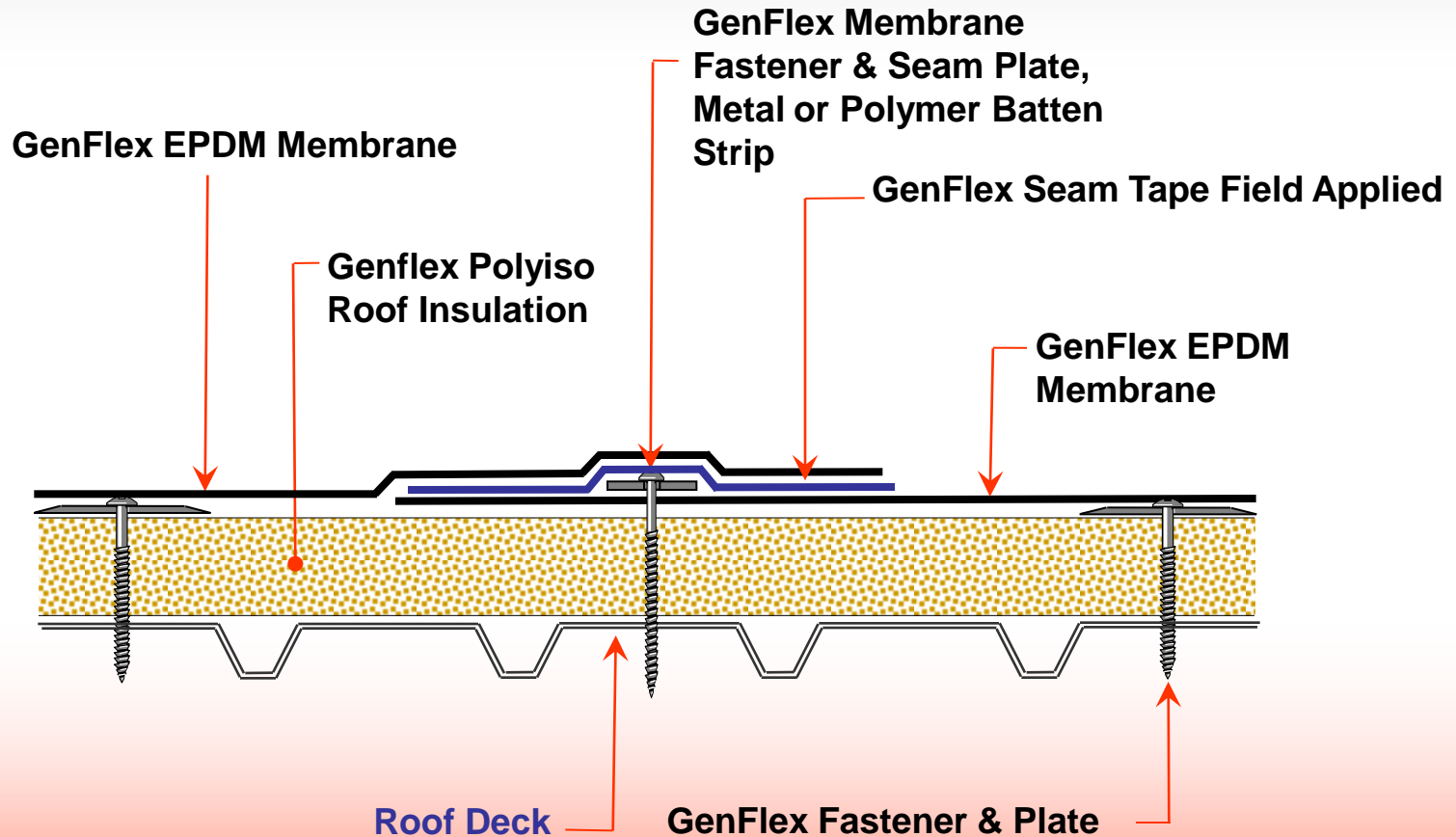
Fully Adhered Peel & Stick™ TPO



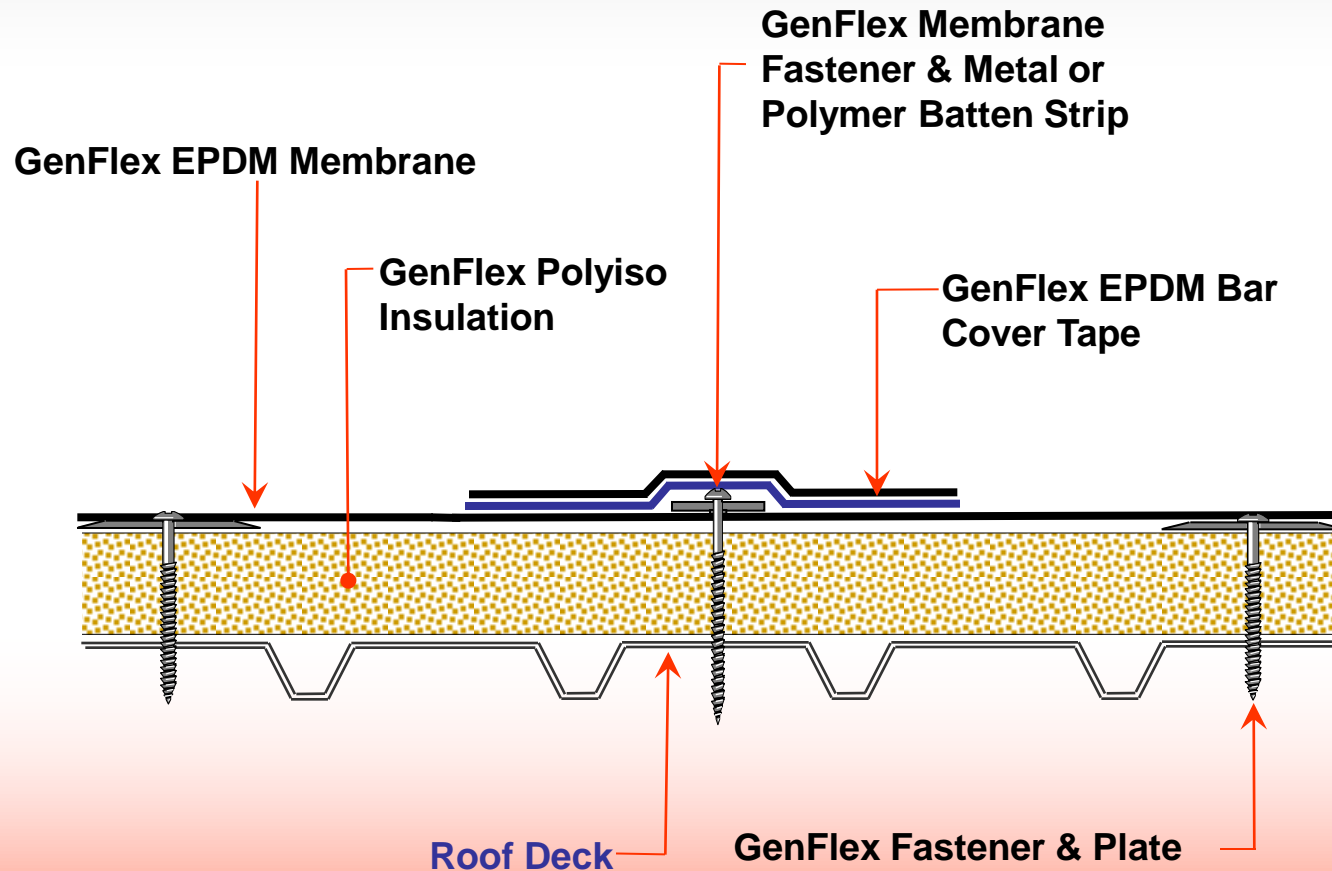
Mechanically Fastened



Mechanically Fastened Bar-In-Seam Method (EPDM)

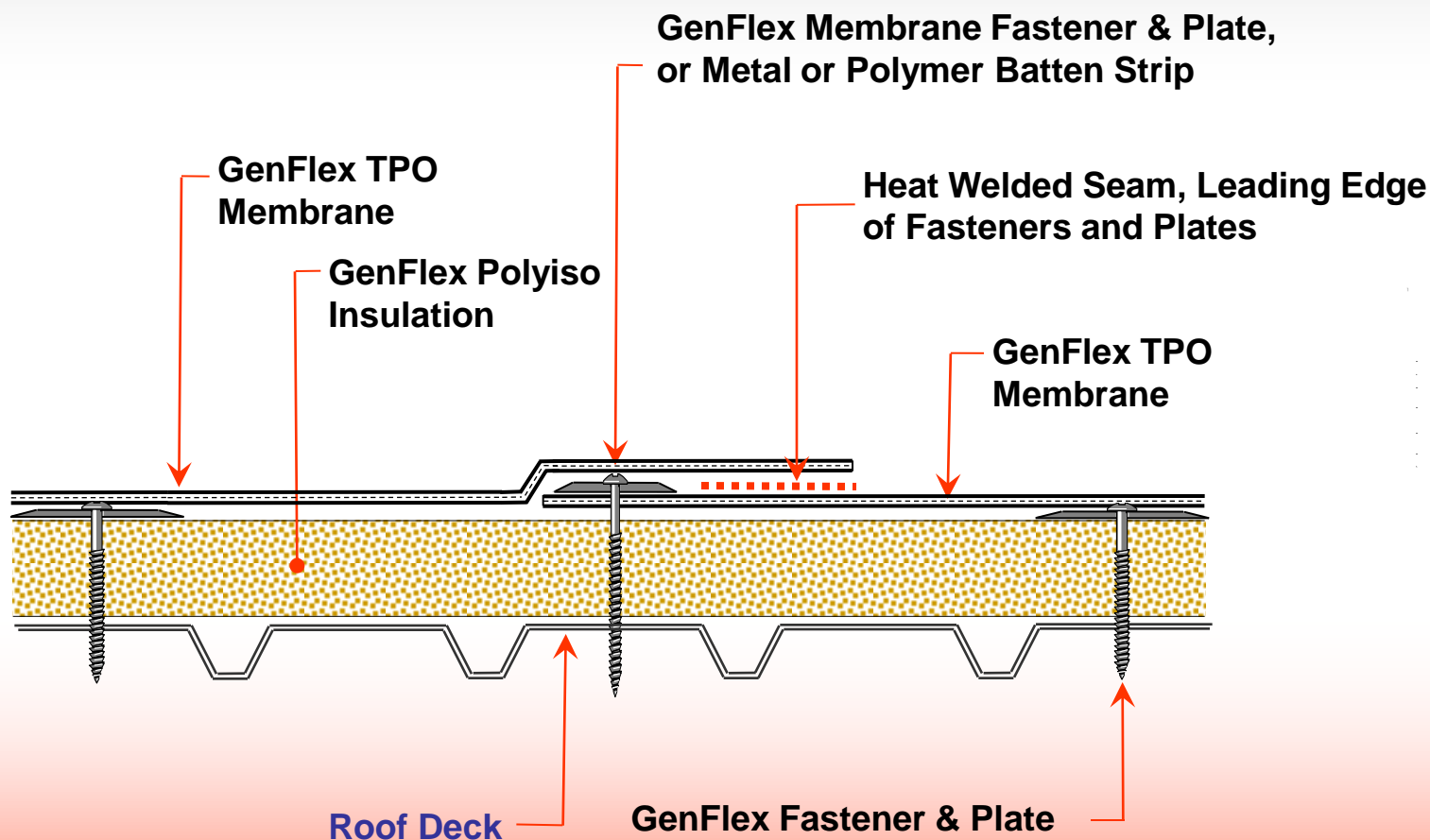


Mechanically Fastened Bar Cover Tape Method (EPDM)



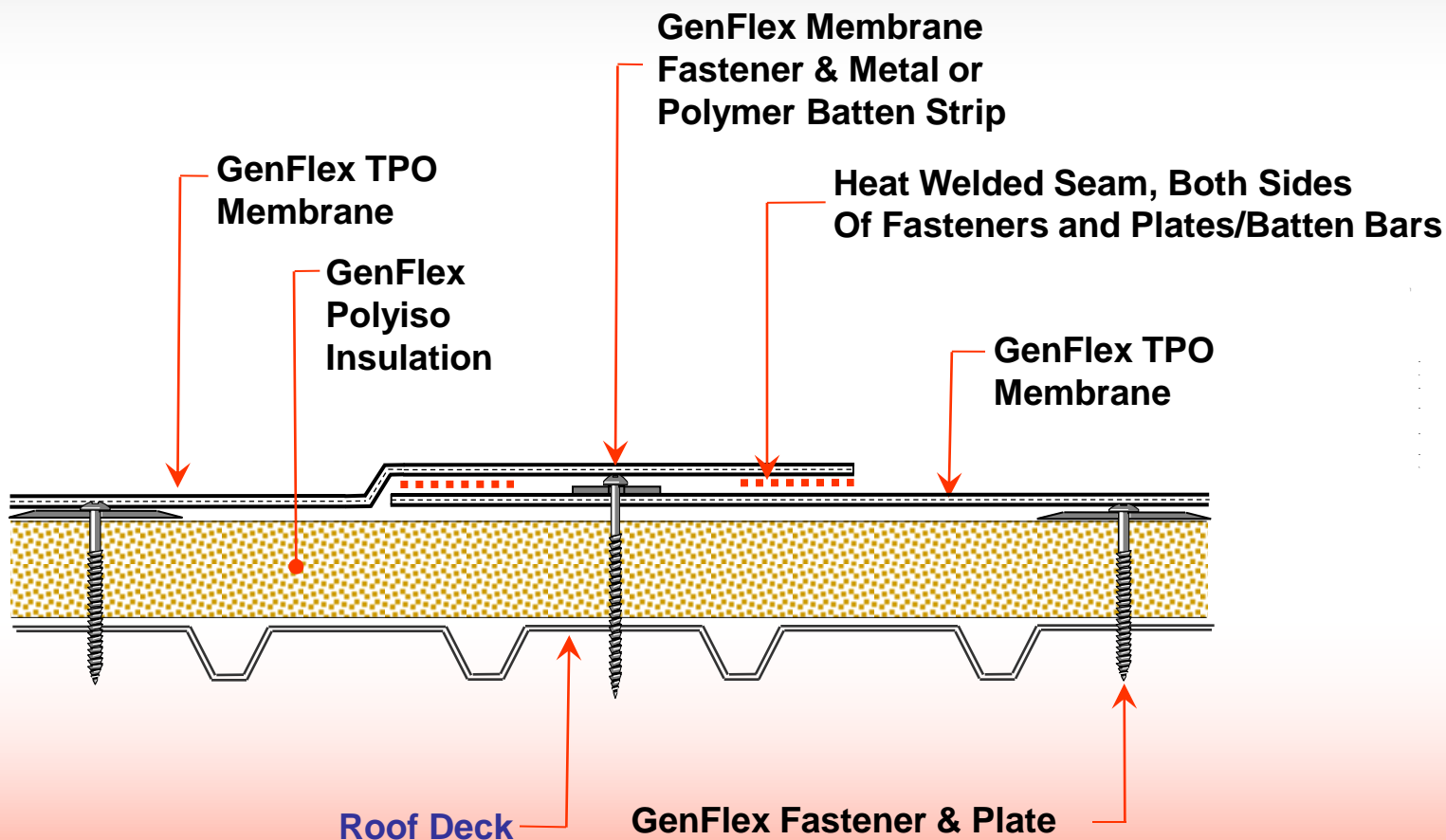
Mechanically Attached TPO

Standard Seam



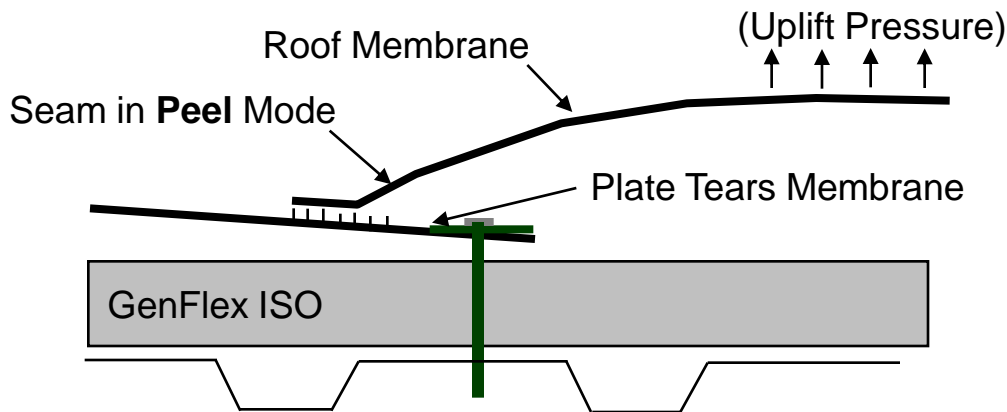
Mechanically Attached TPO

“Dual Weld” Seam



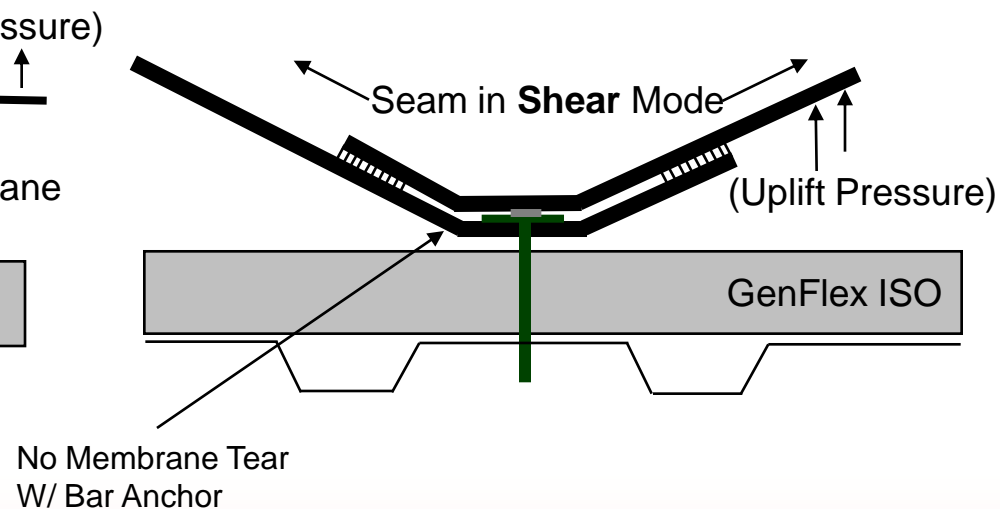
The Dual Weld Difference When Performance Counts

Single Weld Performance



System Performance Depends on
Membrane Weld & Tear Resistance

Dual Weld Performance

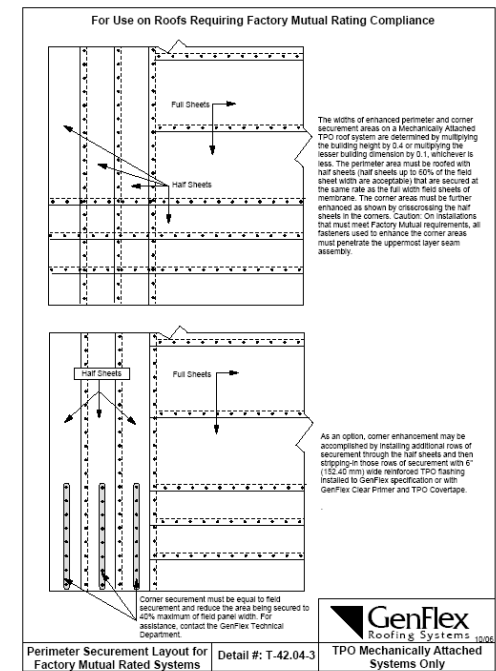
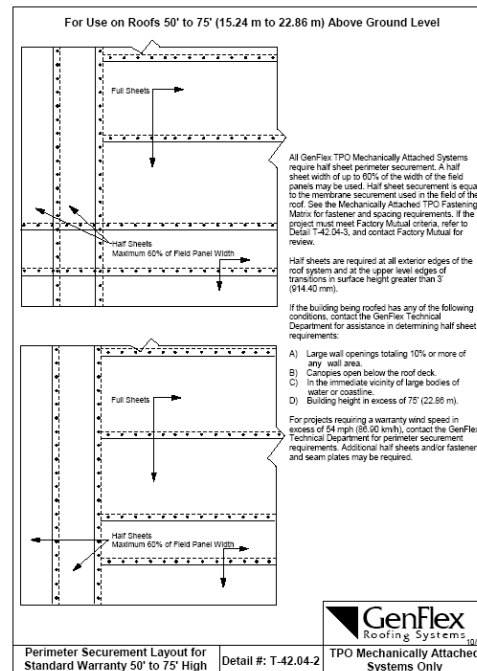
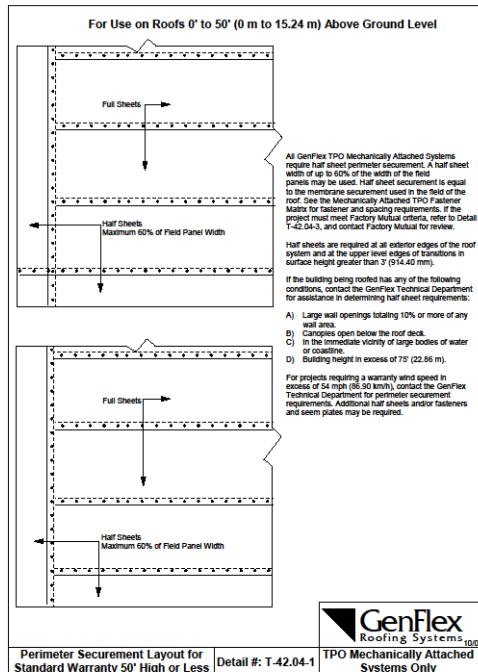


System Performance Depends on
Fastener Pullout

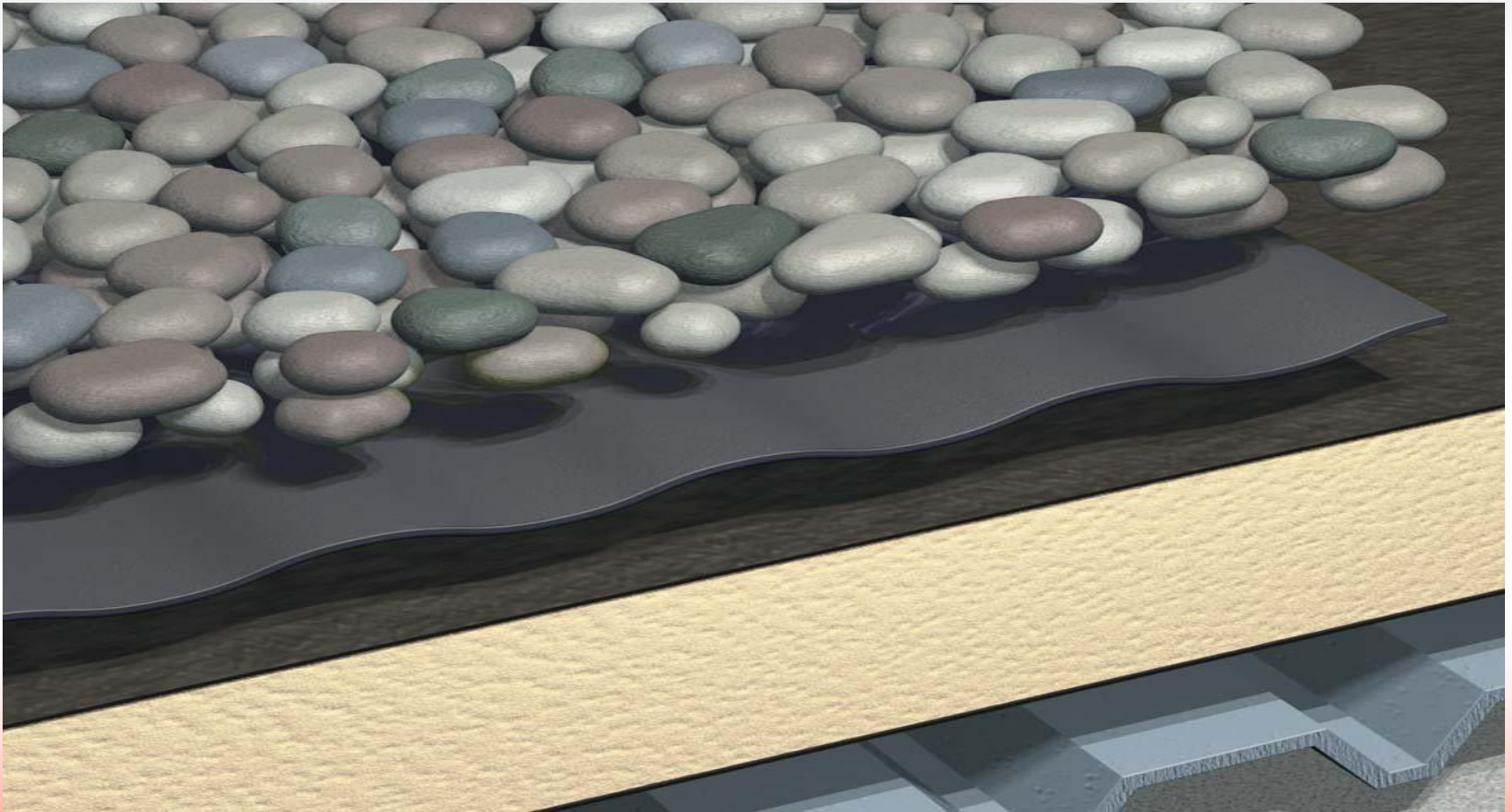


Refer to the appropriate layout detail for perimeter half-sheet requirements.

NOTE: A designer's roofing specification may call out a specific wind resistance rating that could require more half sheets than shown here – these are GenFlex's requirements for warranty coverage and DO NOT supersede a designer's specification.



Ballasted



Ballasted

Water-worn Stone

OR

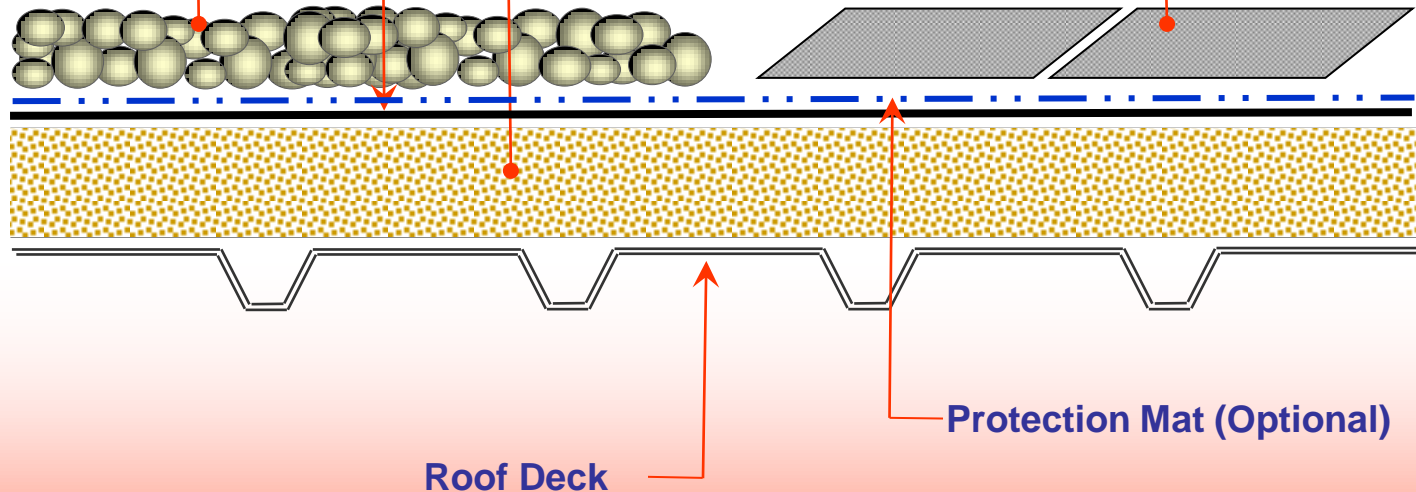
Concrete Pavers

Stone Ballast*, Min. 10 to 12 PSF

Approved Concrete Paver
Min. 10 to 12 PSF

GenFlex EPDM or TPO Membrane

GenFlex Polyiso Insulation



Protection Mat (Optional)

Roof Deck

*Ballast is to be Smooth, Round River Gravel



GenFlex Insulation Products



GenFlex Polyiso

Polyisocyanurate Insulation is among the best insulation available for use under single-ply roof systems.

- ▼ Efficient and cost effective insulation
- ▼ Reduces energy expense over the life of the roofing system
- ▼ Superior fire performance
- ▼ More R-value per inch of thickness than comparable insulations
- ▼ Highly moisture resistant due to closed cell structure
- ▼ GenFlex Warranty coverage extends to products sold by GenFlex



GenFlex Polyiso

Our Customers have access to:

- ▼ The highest quality product
- ▼ 8 Plants Nationwide – an infrastructure unbeaten by anyone
- ▼ The most modern manufacturing and material handling capabilities
- ▼ The largest warehouses and inventories
- ▼ The best delivery capabilities – access to trucking unmatched by anyone
- ▼ TuffWrap™ packaging at all locations



GenFlex Polyiso Plant Locations



GenFlex Polyiso Insulation

- ▼ GenFlex Flat Polyiso is available in thicknesses from 1" to 4"
- ▼ GenFlex Tapered Polyiso is available in 1/8", 1/4", or 1/2" per foot slopes
- ▼ Standard Polyiso Board Sizes are 4' X 4' or 4' X 8'
- ▼ GenFlex comes in Tuff Wrap, a much thicker, more damage resistant packaging that eliminates the need for tarping during shipment and locally (distributor's yard or at the jobsite.)



Tuff Wrap, ready for shipment

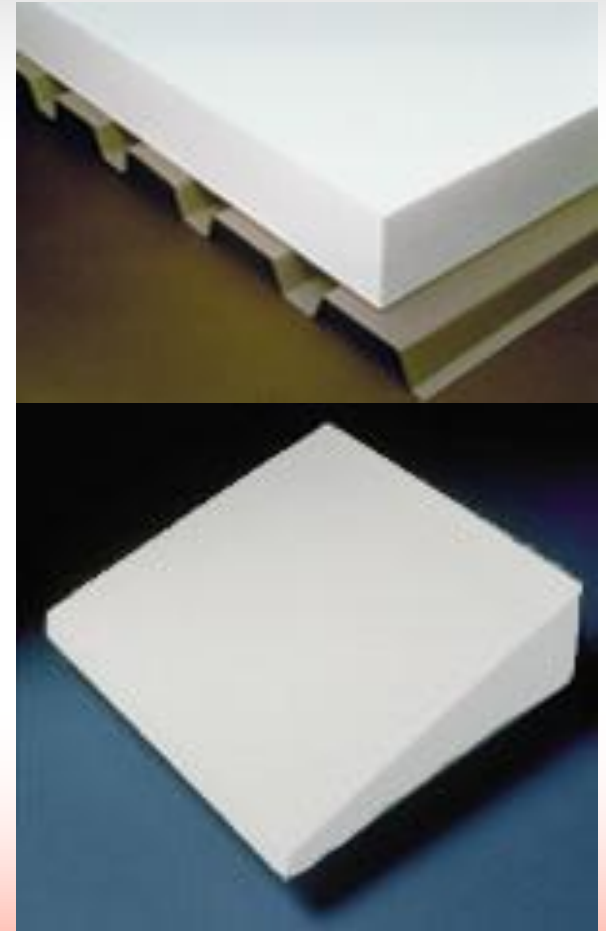


EPS

GenFlex has partnered with ACH Foam Technologies to offer EPS as an economical alternative to ISO.

▼ EPS Advantages

- ▼ Available in many densities to accommodate most installation configurations when installed to current GenFlex Specifications
- ▼ Lightweight, easy to handle
- ▼ No fiberglass facers = user friendly
- ▼ 100% Recyclable
- ▼ Custom tapered & crickets available
- ▼ GenFlex Warranty coverage extends to products sold by GenFlex



EPS Plant Locations



Dens Deck

- ▼ Dens Deck roof board is a highly mold resistant roof panel that consists of a moisture-resistant, noncombustible core of specially treated gypsum with glass mat facings.
- ▼ Dens Deck is a suitable membrane substrate. It has also achieved superior ratings for fire, wind uplift, strength and moisture resistance.
- ▼ GenFlex Warranty coverage can be extended to include Dens Deck.



Wood Fiber Board

- ▼ This uniform-density fiberboard uses cellulosic wood fibers with additives to improve strength and moisture resistance. It is available in high-density versions in 1/2" and 1" thicknesses, and regular-density in 1/2" thickness.
- ▼ Applications include:
 - ▼ Use under fully adhered EPDM single ply membrane (high-density only)
 - ▼ Use under mechanically fastened roof systems
 - ▼ Use under loose-laid ballasted roof systems
- ▼ GenFlex Warranty coverage includes GenFlex Brand Fiber Board.



Securement Accessories



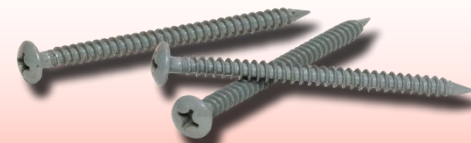
One Step Insulation Adhesive (Chemical Curing)

- ▼ **Category:** Insulation Securement
- ▼ **Additional Product Needed:** Application tool, available in manual or power models
- ▼ **Size:** dual 1.6 qt. cartridges
- ▼ **Per carton/unit:** 4 dual cartridges per ctn.
- ▼ **Coverage Rate:** 200 to 600 ft² per 4 pk ctn., depending on substrate type and application method and rate
- ▼ **Primary use:** Adhesive securement of insulation to approved substrate



New - #12 Fastener & Insulation Plate

- ▼ **Category:** Insulation Securement
- ▼ **Additional Product Needed:** NA
- ▼ **Size:** 2 7/8" Fastener and 3" Insulation Plate
- ▼ **Per carton/unit:** 100 - #12 Fastener and 100 - 3" Insulation Plate per ctn.
- ▼ **Primary use:** Secure insulation to approved steel & wood substrates



#12 Preassembled Fastener & Insulation Plate

- ▼ **Category:** Insulation
Securement
- ▼ **Additional Product Needed:**
NA
- ▼ **Size:** 2.25" to 14"
- ▼ **Per carton/unit:** 150 to 250 per
ctn. depending on fastener
length
- ▼ **Primary use:** Secure insulation
to approved steel & wood
substrates



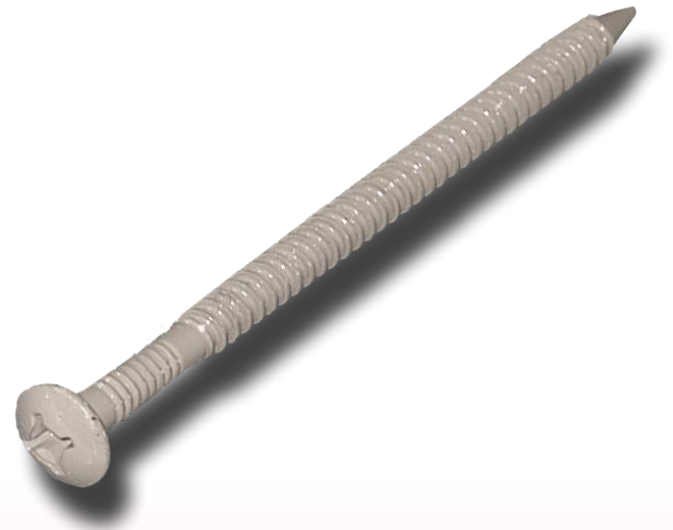
3 Inch Insulation Plates

- ▼ **Category:** Insulation Securement
- ▼ **Additional Product Needed:** GenFast Fasteners
- ▼ **Size:** 3"
- ▼ **Per carton/unit:** 1,000 per ctn.
- ▼ **Primary use:** Used with approved GenFast fastener to secure insulation to approved substrate



#14 Fastener

- ▼ **Category:** Insulation & Membrane Securement
- ▼ **Additional Product Needed:** Insulation plates, seam plates, bar anchor, termination bar
- ▼ **Sizes:**
 - ▼ Stocking: 1.5" to 14"
 - ▼ Additional lengths available
- ▼ **Per carton/unit:** 500 to 1,000 per ctn., depending on fastener length
- ▼ **Primary use:** Secure insulation and membrane to approved steel & wood substrates



#15 WH Fastener

- ▼ **Category:** Insulation & Membrane Securement
- ▼ **Additional Product Needed:** Insulation plates, seam plates, bar anchor, polymer batten strip, termination bar
- ▼ **Size:**
 - ▼ Stocking: 1.25" to 12"
 - ▼ Additional lengths available
- Per carton/unit:** 500 to 1,000 per ctn.
- ▼ **Primary use:** Secure insulation and membrane to approved steel, wood, and concrete substrates



#15 Preassembled Screws & Seam Plates

- ▼ **Category:** Membrane Securement
- ▼ **Additional Product Needed:**
- ▼ **Size:** 2" to 12"
- ▼ **Per carton/unit:** 200 to 250 per ctn., depending on fastener length
- ▼ **Primary use:** Secure Membrane to approved steel, wood, and concrete substrates



2 Inch Seam Plate

- ▼ **Category:** Membrane Securement
- ▼ **Additional Product Needed:** Approved fastener
- ▼ **Size:** 2"
- ▼ **Per carton/unit:** 1,000 per bkt.
- ▼ **Primary use:** Secure membrane and RPS to approved substrate



2 3/8" Barbed Seam Plate

- ▼ **Category:** Membrane Securement
- ▼ **Additional Product Needed:** Approved fastener
- ▼ **Size:** 2 3/8"
- ▼ **Per carton/unit:** 1,000 per bkt.
- ▼ **Primary use:** Secure membrane and RPS to approved substrate



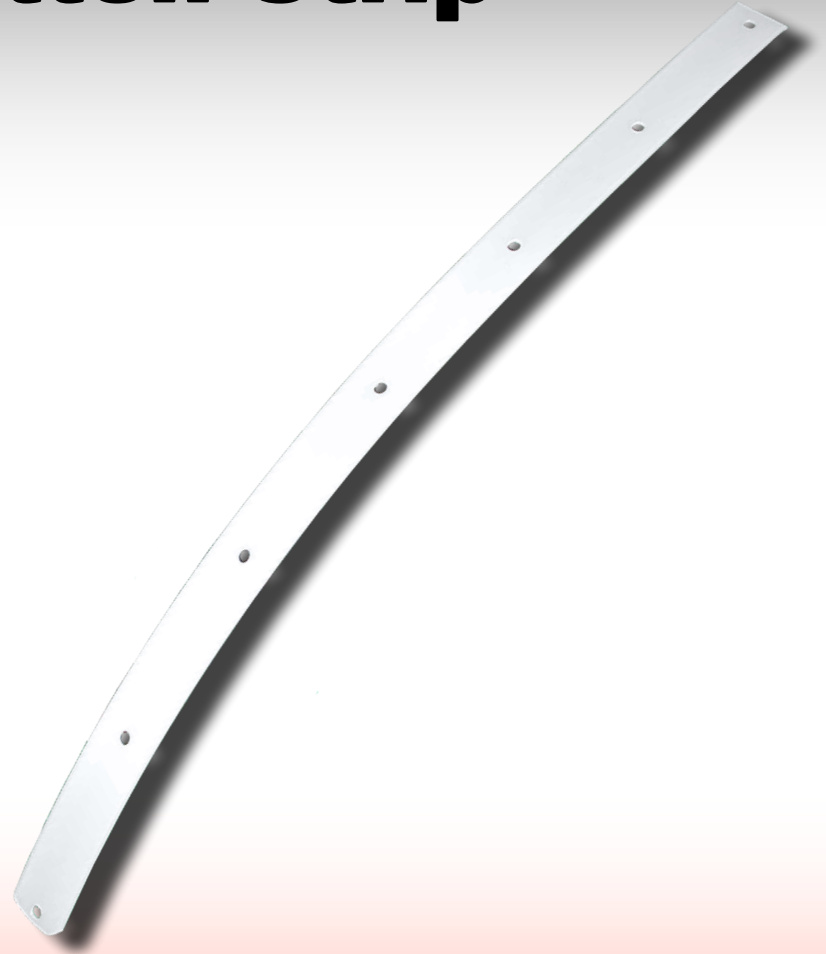
Bar Anchor

- ▼ **Category:** Membrane Securement
- ▼ **Additional Product Needed:** Approved fastener
- ▼ **Size:** 1" x 10 ', pre-drilled 6" O.C.
- ▼ **Per carton/unit:** 50 pc. per tube (500')
- ▼ **Primary use:** Secure membrane and RPS to approved substrate



Polymer Batten Strip

- ▼ **Category:** Membrane Securement
- ▼ **Additional Product Needed:** Approved fastener
- ▼ **Size:** 1" x 250'
- ▼ **Per carton/unit:** 1 roll per ctn.
- ▼ **Primary use:** Secure membrane and RPS to approved substrate



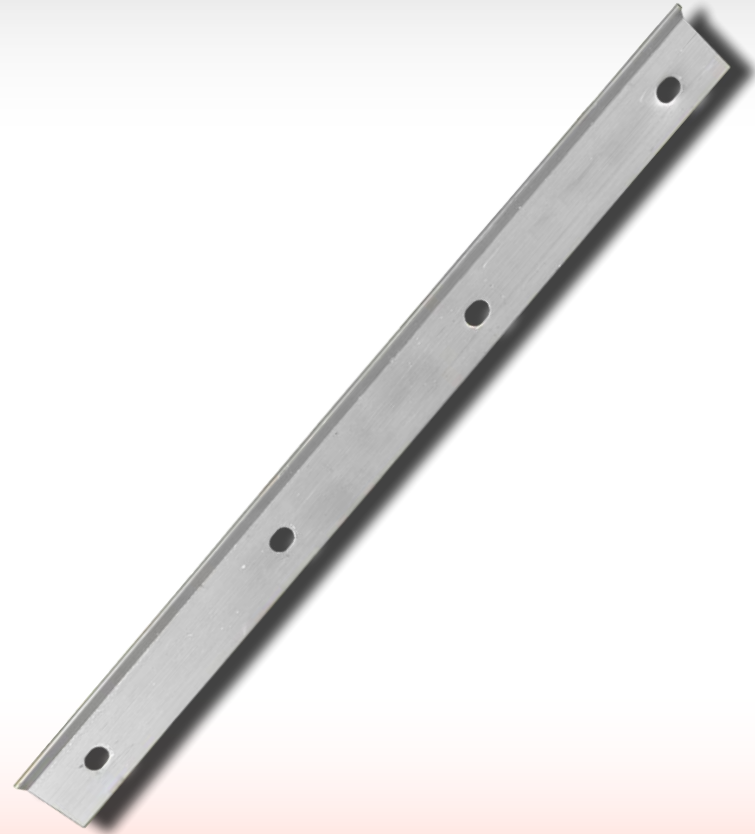
Zinc Masonry Anchor

- ▼ **Category:** Membrane Securement
- ▼ **Additional Product Needed:** Termination Bar, 2" Seam plates
- ▼ **Size:** 1.25"
- ▼ **Per carton/unit:** 1,000 per ctn.
- ▼ **Primary use:** Membrane securement and termination



Termination Bar

- ▼ **Category:** Membrane Securement
- ▼ **Additional Product Needed:** Approved fastener
- ▼ **Size:**
 - ▼ 1" x 10', pre-drilled 4" o.c.
 - ▼ **New Size – 1" x 5' pre-drilled 4" o.c.**
- ▼ **Per carton/unit:**
 - ▼ 50 pc. per tube (500')
 - ▼ **New Packaging - 25 pc, per tube (125')**
- ▼ **Primary use:** Membrane termination into non-porous substrates



GenFlex EPDM Products



GenFlex EPDM Membrane

Standard membrane
Thicknesses:

- ▼ 45 mil (.045") & 60 mil (.060")

Standard membrane sizes:

- ▼ Unreinforced membrane - 5.5', 7.5', 10', 15', 16.66', 20', 25', 30', 40' or 50' widths X 50' or 100' lengths
- ▼ **New Size Available .060 – 10' & 20' wide X 25' long**
- ▼ **New Size Available .045 – 10', 15' & 20' Wide X 25' Long**
- ▼ **New Thickness Available**
- ▼ **90 mil (.090")**
- ▼ Reinforced membrane – 10' width X 100' length

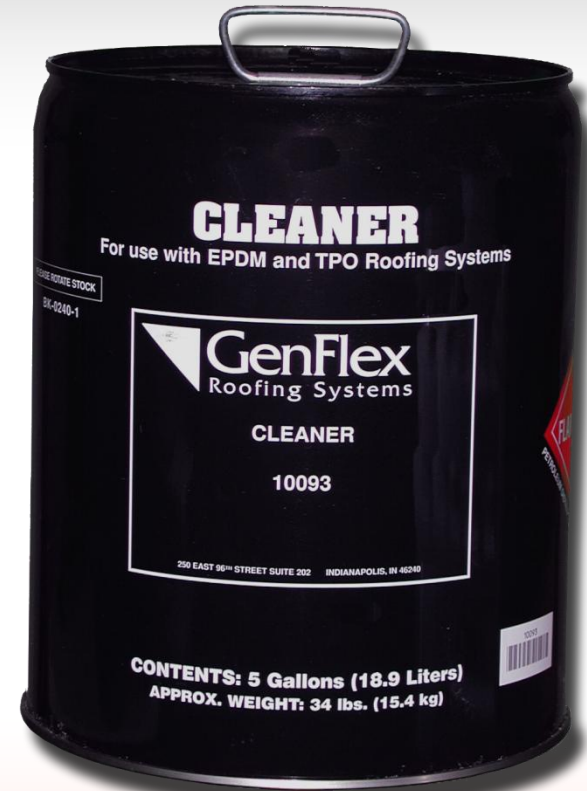


**GenFlex Seam
Tape**



Cleaner

- ▼ **Category:** EPDM & TPO
- ▼ **Additional Product Needed:** NA
- ▼ **Size:** 5 gal. pail
- ▼ **Per carton/unit:** 1 pail
- ▼ **Coverage Rate:** Varies depending on ambient conditions and condition of membrane being cleaned
- ▼ **Primary use:** Clean membrane prior to application of splice adhesive or tape



Bonding Adhesive

- ▶ **Category:** EPDM & TPO
- ▶ **Additional Product Needed:** GenFlex Membrane
- ▶ **Sizes:** 5, 3 & 1 gal
- ▶ **Coverage Rate:** 60 to 70 ft² of finished surface per gallon
- ▶ **Primary use:** Adhere membrane to insulation, approved substrates, and walls using a two-sided application (membrane and substrate).



EPDM Water Based Bonding Adhesive

- ▼ **Category:** EPDM
- ▼ **Additional Product Needed:** GenFlex EPDM
- ▼ **Size:** 5 gal. 3 gal. & 1 gal. pail
- ▼ **Coverage Rate:** 120 ft²/gallon
- ▼ **Primary use:** Adhere membrane to insulation, approved substrates, and walls using a two-sided application (membrane and substrate).



GenPrime

- ▼ **Category:** EPDM
- ▼ **Additional Product Needed:** GenFlex EPDM, Scrub Pad & Handles
- ▼ **Size:** 1 gal & 3 gal
- ▼ **Per carton/unit:**
 - ▼ 1 gal – 4 per ctn.
 - ▼ 3 gal – 1 pail
- ▼ **Coverage Rate:** 200 to 250 ft²/gallon
- ▼ **Primary use:** Preparation of seam & details where tape is used.
- ▼ **Applied with Scrub Pad only**
NO BRUSH OR ROLLER APPLICATION



Pourable Sealer

- ▼ **Category:** EPDM & TPO
- ▼ **Additional Product Needed:**
Pipe boot or metal pocket
- ▼ **Size:**
 - ▼ Part A – 1 gal
 - ▼ Part B – 1 quart
- ▼ **Per carton/unit:** 2 ea. per ct.
- ▼ **Coverage Rate:** 1 ft² / gallon
@ 2" thick
- ▼ **Primary use:** To seal around irregularly shaped penetrations, or penetrations clustered too tightly to flash individually using a pourable sealer pocket.
- ▼ **Secondary Use:** Night Seal



Edge Caulks (Black)

**New
Low VOC**

- Category: EPDM
- Additional Product Needed:**
Applicator required, Cleaner if needed
- Size:** 11 fl. oz. tubes or 5 gal. pail
- Per carton/unit:**
 - New Packaging - 12 tubes per ctn.**
- Coverage Rate:** 15 lf/tube or 175'/gallon
- Primary use:** Seal EPDM seam edges & details when required



Waterstop

- ▼ **Category:** EPDM & TPO
- ▼ **Additional Product Needed:** NA
- ▼ **Size:** 11 fl. oz. Tube
- ▼ **Per carton/unit:**
 - ▼ **New Packaging - 12 tubes per ctn.**
- ▼ **Coverage Rate:** 15 lf/tube or 1 drain
- ▼ **Primary use:** compression sealant for drains, membrane and flashing terminations



Termination Caulk

- ▼ **Category:** EPDM & TPO
- ▼ **Additional Product Needed:** NA
- ▼ **Size:** 11 fl. oz. tubes
- ▼ **Per carton/unit:** 25 tubes per ctn.
- ▼ **Coverage Rate:** 25 lf/tube
- ▼ **Primary use:** Exterior caulking of termination bar and pipe clamps



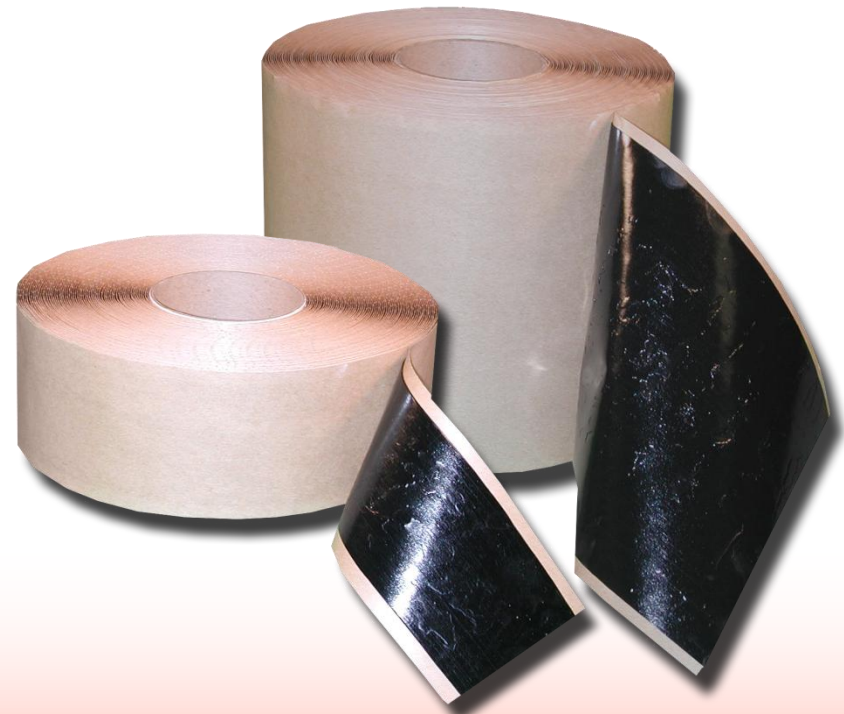
EPDM Flashing

- ▼ **Category:** EPDM
- ▼ **Additional Product Needed:**
Cleaner, Splice Adhesive, Edge Caulk
- ▼ **Size:** 6", 9", 12", 18", 24" x 100'
- ▼ **Per carton/unit:**
 - ▼ 6" – 2 per ctn.
 - ▼ 9" – 2 per ctn.
 - ▼ 12" – 2 per ctn.
 - ▼ 18" – 1 per ctn.
 - ▼ 24" – 1 per ctn.
- ▼ **Primary use:** Field fabricated corners, pitch pockets, and pipes



Seam Tape

- ▼ **Category:** EPDM
- ▼ **Additional Product Needed:**
Cleaner, Primer
- ▼ **Size:**
 - ▼ 3" x 100'
 - ▼ 7" x 100'
 - ▼ **Smart Size – 3" x 50'**
 - ▼ **Per carton/unit:**
 - ▼ 3" X 100' – 4 rolls per ctn.
 - ▼ 7" X 100' – 2 rolls per ctn.
 - ▼ **New Packaging - 3" X 50' – 6 rolls per ctn.**
- Primary use:** Seaming EPDM panels together. 3" for standard seams, 7" for MAS seams. 100'



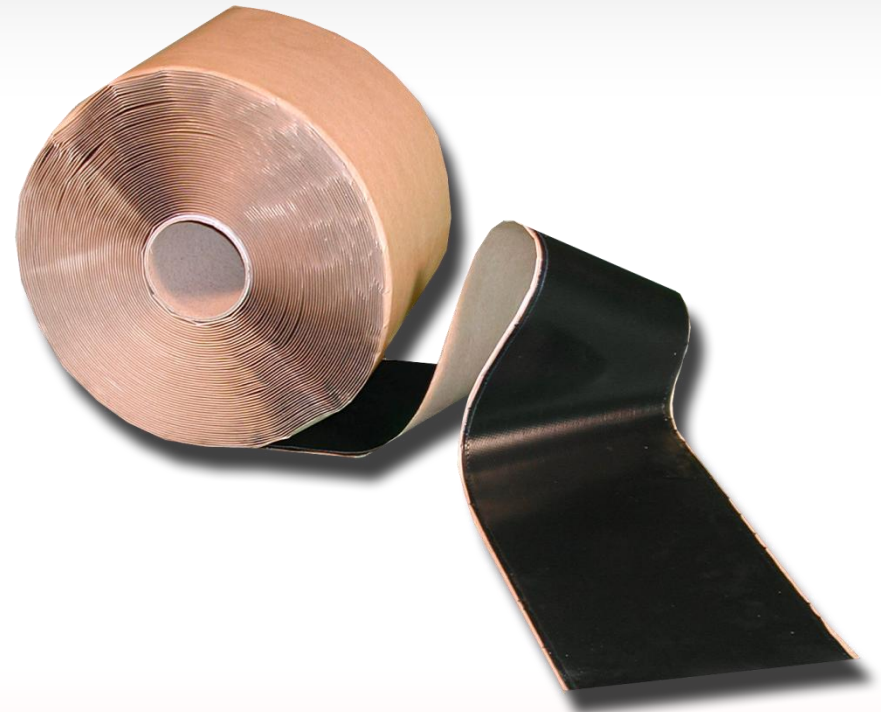
Bar Cover Tape

- ▼ **Category:** EPDM
- ▼ **Additional Product Needed:**
Cleaner, Primer, Edge Caulk
- ▼ **Size:**
 - ▼ 6" x 100'
 - ▼ 12" x 100'
 - ▼ **Smart Size – 6" x 25'**
- ▼ **Per carton/unit:**
 - ▼ 6" x 100' – 2 rolls per ctn.
 - ▼ 12" x 100' – 1 roll per ctn.
 - ▼ **New Packaging – 6' x 25' – 4 rolls per ctn.**
- ▼ **Primary use:** Strip metal edge at perimeter or BCT system
- ▼ **Secondary Use:** Seam repair



Peel & Stick EPDM Flashing

- ▼ **Category:** EPDM
- ▼ **Additional Product Needed:**
Cleaner, Primer, Edge Caulk
- ▼ **Size:**
 - ▼ 7" x 100'
 - ▼ 9" x 50'
 - ▼ **Smart Size – 9" x 25'**
- ▼ **Per carton/unit:**
 - ▼ 7" x 100' - 2 rolls per ctn.
 - ▼ 9" x 50' – 2 rolls per ctn.
 - ▼ **New Packaging – 9" x 25' 1 roll per ctn.**
- ▼ **Primary use:** Field fabricated corners, pitch pockets, and pipes



GenPocket E

- ▼ **Category:** EPDM
- ▼ **Additional Product Needed:** Cleaner, Primer, Scrub Pad & Handle, Edge Caulk
- ▼ **Size:** 6.7" Round X 2" deep
- ▼ **Per carton/unit:** 6 - GenPocket E, 6 - Plastic Rings, 6 - Peel & Stick Corners, 2 - Stir Sticks and 1 -Scrubber Pad and Handle per carton.
- ▼ **Primary use:** Used to flash irregularly shaped or densely concentrated roof penetrations.



Peel & Stick Corners (60 mil)

- ▼ **Category:** EPDM
- ▼ **Additional Product Needed:** Cleaner, Primer, Scrub Pad & Handle, Edge Caulk
- ▼ **Size:** 8.5" round
- ▼ **Per carton/unit:** 20 corners per ctn.
- ▼ **Primary use:** Flashing inside or outside corners



Peel & Stick EPDM T-Joint Cover

- ▼ **Category:** EPDM
- ▼ **Additional Product Needed:** Cleaner, Primer, Scrub Pad & Handle, Edge Caulk
- ▼ **Size:** 8" x 10"
- ▼ **Per carton/unit:** 25 per box
- ▼ **Primary use:** Secondary seam seal at transitions where three or more panels intersect



Peel & Stick Pipe Boot

- ▼ **Category:** EPDM
- ▼ **Additional Product Needed:** Cleaner, Primer, Scrub Pad & Handle, Edge Caulk
- ▼ **Fits:** Pipes O.D. 1" to 6"
- ▼ **Per carton/unit:** 10 boots per ctn.
- ▼ **Primary use:** Pipe Flashing



Peel & Stick RPS with 3" Tape

- ▼ **Category:** EPDM
- ▼ **Additional Product Needed:** Cleaner, Primer, Scrub Pad & Handle
- ▼ **Size:** 6" with 3" tape x 100'
- ▼ **Per carton/unit:** 2 rolls per ctn.
- ▼ **Primary use:** Membrane base securement



Peel & Stick EPDM Walkway Pad

- ▼ **Category:** EPDM
- ▼ **Additional Product Needed:** Cleaner, Primer, Scrub Pad & Handle
- ▼ **Size:** 30" x 30"
- ▼ **Per carton/unit:** 50 per pallet
- ▼ **Primary use:** Protect field membrane in high traffic areas



GenFlex TPO Products



GenFlex TPO Membrane

Hot Air Welded Seams



Typical Self-Propelled Hot air Welder ("Robot")



GenFlex TPO Membrane

Standard membrane thicknesses:

- ▼ 45 mil (.045"), 60 mil (.060"), and 80 mil (.080")

Standard membrane sizes:

- ▼ 45 & 60 mil - 4', 6', 8', 10' & 12' X 100' length
- ▼ 80 mil – 4' & 8' X 75' length
- ▼ **New Size – 6.16' x 50' & 10' x 25' (.045 White Only)**

Standard colors:

- ▼ 45 and 60 mil: White, Gray & Tan
- ▼ 80 mil: White



Attachment of GenFlex TPO Membrane



GenFlex Peel & Stick™ TPO Membrane

- ▼ GenFlex was the first to introduce a self-adhering TPO membrane.
- ▼ Peel & Stick membranes eliminate the need for bonding adhesives - no solvent fumes for crews or exposure to building occupants during installation.
- ▼ Peel & Stick applications cut membrane installation time and significantly reduce labor.
- ▼ GenFlex offers two different Peel & Stick Membranes:
 - ▼ Peel & Stick™ TPO (HW)
Heat Welded Seams



**SA Membrane
Installation**



Peel & Stick™ TPO Membranes

- ▼ Peel & Stick™ TPO Membranes are fast, safe, and easy to install.
- ▼ Peel & Stick™ TPO (HW)
 - ▼ Sheet sizes available: 6.25', 10' x 100'
 - ▼ Color: White
 - ▼ Gauges: 45 & 60 mil



New Product

TPO Membranes – *Fabric Reinforced, Standard & Felt Backed*

- ▼ Standard thicknesses:
 - ▼ Standard (Smooth Backed):
 - ▼ 45, 60 & 80 mil
 - ▼ Felt Backed:
 - ▼ 45 & 60 mil
- ▼ Standard sizes:
 - ▼ Standard:
 - ▼ 45 & 60 mil - 4', 6', 8', 10' & 12' Widths X 25, 50 & 100' lengths
 - ▼ 80 mil – 4' & 8' X 75' length
 - ▼ Felt Backed:
 - ▼ 45 & 60 mil – 10' Width X 100' Length
- ▼ Colors:
 - ▼ Standard – White
 - ▼ Special Order - Gray & Tan

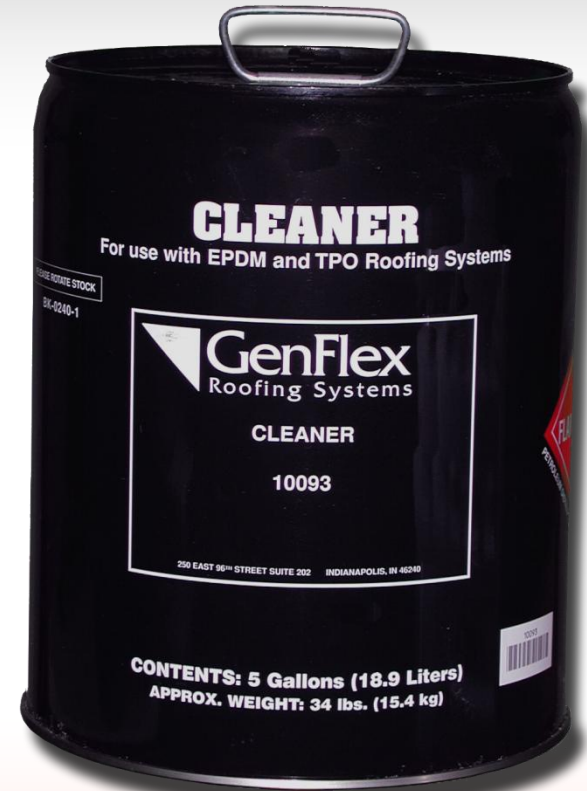


**Attachment of
GenFlex TPO
Membrane**



Cleaner

- ▼ **Category:** EPDM & TPO
- ▼ **Additional Product Needed:** NA
- ▼ **Size:** 5 gal. pail
- ▼ **Per carton/unit:** 1 pail
- ▼ **Coverage Rate:** Varies depending on ambient conditions and condition of membrane being cleaned
- ▼ **Primary use:** Clean membrane prior to application of splice adhesive or tape



Clear Primer

- ▼ **Category:** TPO
- ▼ **Additional Product Needed:** Cleaner, GenFlex Membrane
- ▼ **Size:** 3 gal
- ▼ **Per carton/unit:**
 - ▼ 3 gal pail
 - ▼ **New Size & Packaging –**
1 quart Cans packaged 6 per ctn.
- ▼ **Coverage Rate:** 200 ft²/gallon
- ▼ **Primary use:** Prepare substrate for Peel & Stick product application



TPO Bonding Adhesive

- ▼ **Category:** TPO
- ▼ **Additional Product Needed:**
- ▼ GenFlex TPO Membrane
- ▼ **Size:** 5 gal. pail
- ▼ **Coverage Rate:** 60 to 70 ft² of finished surface per gallon
- ▼ **Primary use:** Adhere TPO membrane to insulation, approved substrates, and walls using a two-sided application (membrane and substrate).



All Purpose Bonding Adhesive

- ▼ **Category:** EPDM & TPO
- ▼ **Additional Product Needed:**
- ▼ GenFlex Membrane
- ▼ **Size:** 1 & 3 gal. pail
- ▼ **Coverage Rate:** 60 to 70 ft² of finished surface per gallon
- ▼ **Primary use:** Adhere membrane to insulation, approved substrates, and walls using a two-sided application (membrane and substrate).



New Product Substrate Primer

- ▶ **Category:** TPO
- ▶ **Additional Product Needed:** GenFlex Membrane and 1/2" Medium Nap Paint Roller
- ▶ **Size:** 1 gal
- ▶ **Per carton/unit:**
 - ▶ 4 gallon pails per ctn.
- ▶ **Coverage Rate:** 200 ft²/gallon
- ▶ **Primary use:** Prepare substrate for Peel & Stick Membrane and Peel & Stick Wall/Curb product application



Pourable Sealer

- ▼ **Category:** EPDM & TPO
- ▼ **Additional Product Needed:**
Pipe boot or metal pocket
- ▼ **Size:**
 - ▼ Part A – 1 gal
 - ▼ Part B – 1 quart
- ▼ **Per carton/unit:** 2 ea. per ct.
- ▼ **Coverage Rate:** 1 ft² / gallon
@ 2" thick
- ▼ **Primary use:** To seal around irregularly shaped penetrations, or penetrations clustered too tightly to flash individually using a pourable sealer pocket.
- ▼ **Secondary Use:** Night Seal



Waterstop

- ▼ **Category:** EPDM & TPO
- ▼ **Additional Product Needed:** NA
- ▼ **Size:** 11 fl. oz. Tube
- ▼ **Per carton/unit:**
 - ▼ **New Packaging -12 tubes per ctn.**
- ▼ **Coverage Rate:** 15 lf/tube or 1 drain
- ▼ **Primary use:** compression sealant for drains, membrane and flashing terminations



Termination Caulk

- ▼ **Category:** EPDM & TPO
- ▼ **Additional Product Needed:** NA
- ▼ **Size:** 11 fl. oz. tubes
- ▼ **Per carton/unit:** 25 tubes per ctn.
- ▼ **Coverage Rate:** 25 lf/tube
- ▼ **Primary use:** Exterior caulking of termination bar and pipe clamps



TPO Edge Caulk (White)

- Category: TPO
- Additional Product Needed: NA
- Size: 11 fl. oz. Tube
- Per carton/unit:
 - New Packaging - 12 tubes per ctn.**
- Coverage Rate: 15 lf/tube or 1 drain
- Primary use: Seal TPO seam edges & details when required

**New
Low VOC**



TPO Edge Sealant

- ▼ **Category:** TPO
- ▼ **Additional Product Needed:** NA
- ▼ **Size:** 16 fl. oz. bottle
- ▼ **Colors:** White, Grey, Tan
- ▼ **Per carton/unit:** 12 bottles per ctn.
- ▼ **Coverage Rate:** 115 lf/bottle
- ▼ **Primary use:** Seal exposed scrim at cut edges of TPO membrane to prevent wicking of moisture



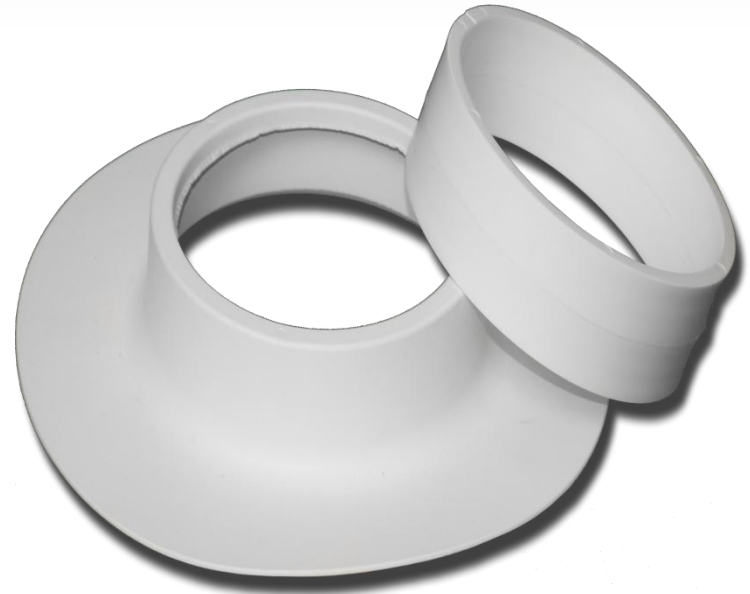
TPO T-Joint Cover

- ▼ **Category:** TPO
- ▼ **Additional Product Needed:** Cleaner
- ▼ **Size:** 4" round
- ▼ **Per carton/unit:** 100 per ctn.
- ▼ **Primary use:** Secondary seam seal at transitions where three or more panels intersect



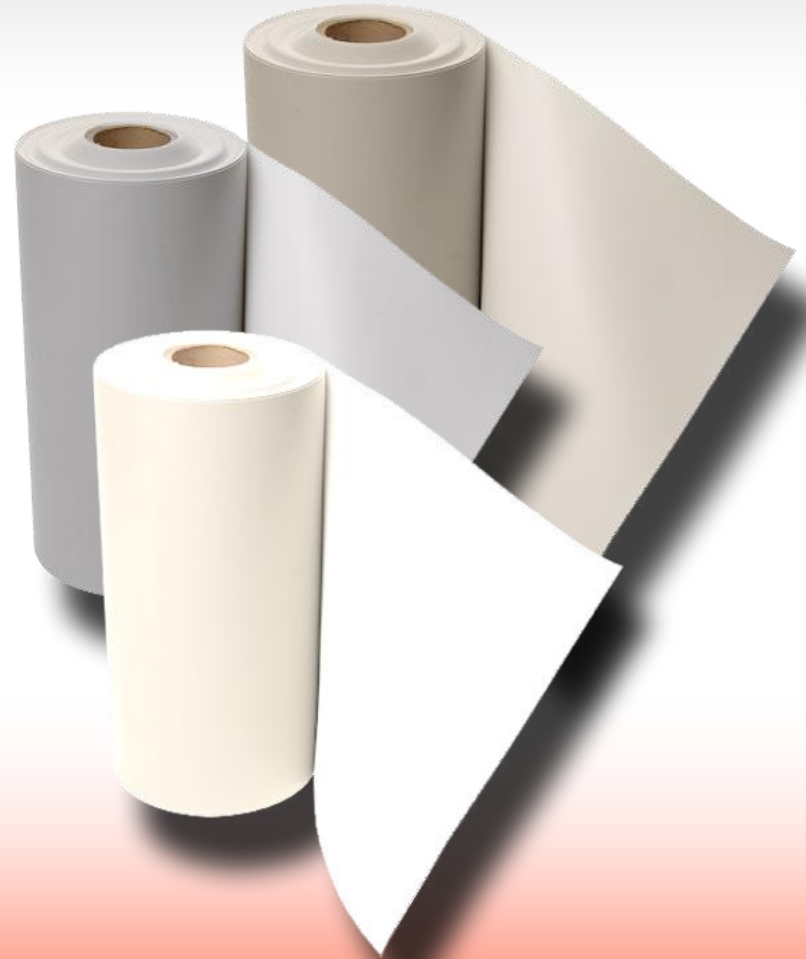
GenPocket T

- ▼ **Category:** TPO
- ▼ **Additional Product Needed:**
Cleaner, Hot Air Welder
- ▼ **Size:** 6.7" Round X 2" deep
- ▼ **Per carton/unit:** 6 - GenPocket T, 6 - Plastic Rings, 2 - Stir Sticks per carton.
- ▼ **Primary use:** Used to flash irregularly shaped or densely concentrated roof penetrations.



TPO Flashing

- ▼ **Category:** TPO
- ▼ **Additional Product Needed:** Cleaner
- ▼ **Size:** 24" x 50'
- ▼ **Colors:** White, Grey, Tan
- ▼ **Per carton/unit:** 1 roll
- ▼ **Primary use:** Flash penetrations that cannot be flashed with pre-fabricated flashing accessories



TPO Pipe Boot

- ▼ **Category:** TPO
- ▼ **Additional Product Needed:**
Cleaner, Waterstop,
Termination Caulk
- ▼ **Size:** 1" – 6"
- ▼ **Per carton/unit:** 10 boots per
ctn.
- ▼ **Primary use:** Flashing pipe
penetrations
- ▼ **Secondary Use:** Field-
fabricated pitch pocket



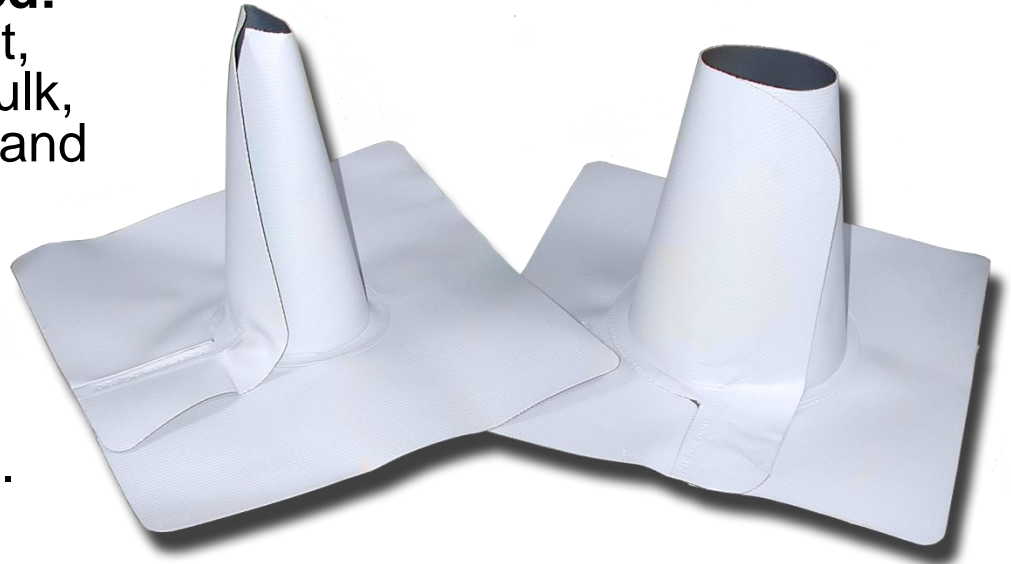
Peel & Stick TPO Pipe Boot

- ▼ **Category:** TPO
- ▼ **Additional Product Needed:** Cleaner, Primer, Waterstop, Termination Caulk
- ▼ **Size:** 1" – 6"
- ▼ **Per carton/unit:** 8 boots per ctn.
 - ▼ Also included: Clamp rings, 2 scrub pads, 1 handle
- ▼ **Primary use:** Flashing pipe penetrations
- ▼ **Secondary Use:** Field-fabricated pitch pocket



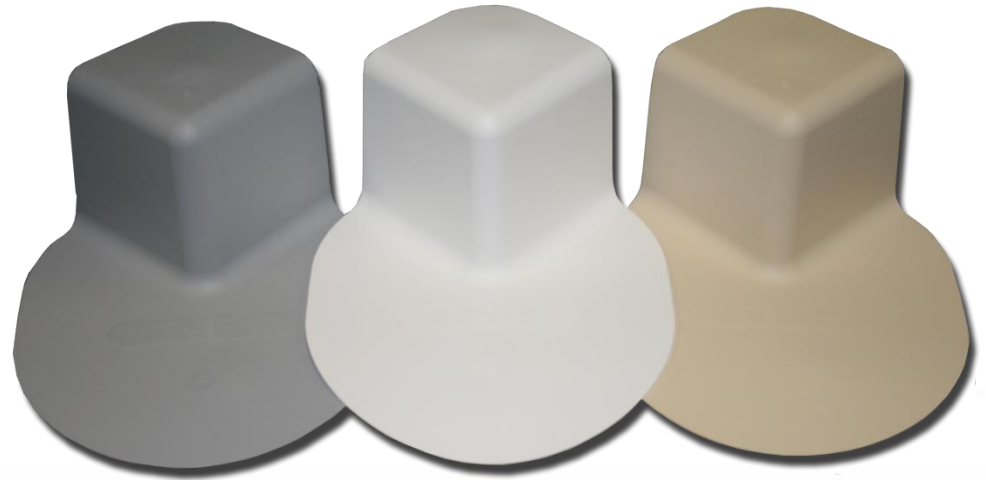
TPO Reinforced Pipe Boots

- ▼ **Category:** TPO
- ▼ **Additional Product Needed:**
Cleaner, TPO Edge Sealant,
Waterstop, Termination Caulk,
Stainless Steel Clamping Band
- ▼ **Size:**
 - ▼ 1" to 3"
 - ▼ 3" to 6"
- ▼ **Colors:** White, Grey, Tan
- ▼ **Per carton/unit:** 10 per ctn.
- ▼ **Primary use:** Flash round penetrations



TPO Inside & Outside Corners

- ▼ **Category:** TPO
- ▼ **Additional Product Needed:** Cleaner
- ▼ **Size:** NA
- ▼ **Colors:** White, Grey, Tan
- ▼ **Per carton/unit:** 10 per ctn.
- ▼ **Primary use:** Flash inside and outside corners, respectively



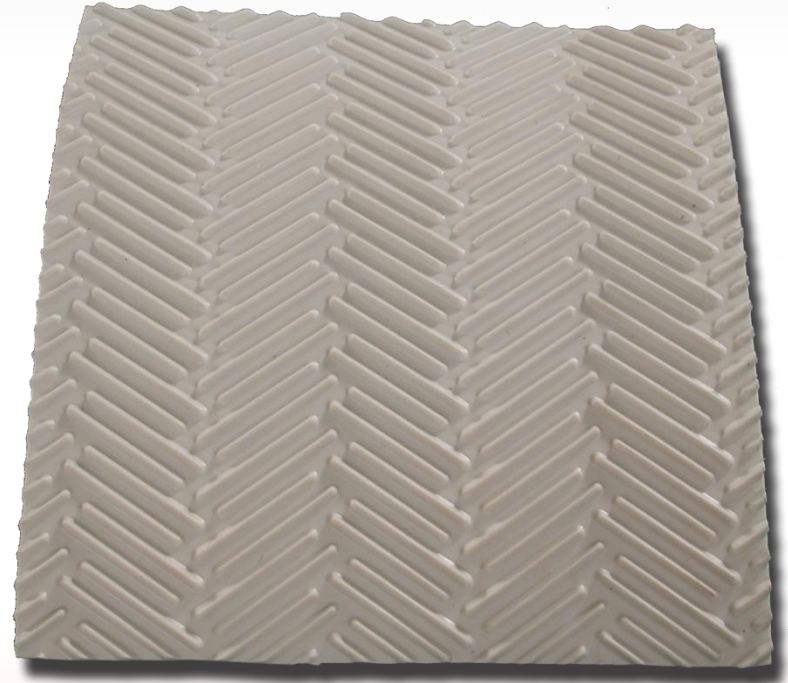
TPO Reinforced Outside Corner

- ▼ **Category:** TPO
- ▼ **Additional Product Needed:** Cleaner, TPO Edge Sealant
- ▼ **Size:** NA
- ▼ **Colors:** White, Grey, Tan
- ▼ **Per carton/unit:** 10 per ctn.
- ▼ **Primary use:** Flash outside corners



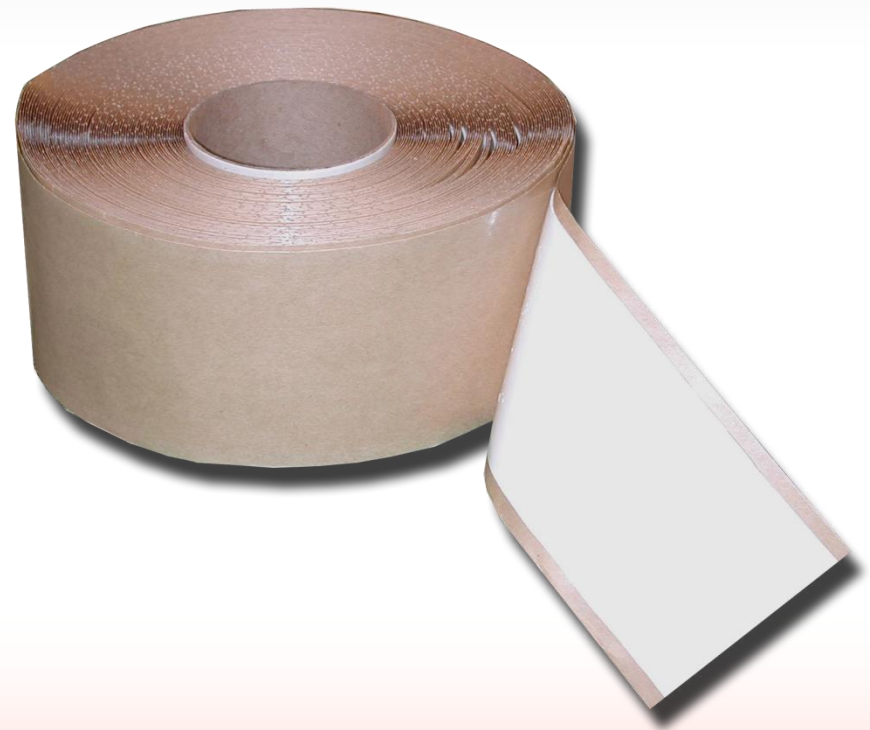
TPO Walkway Pad

- ▼ **Category:** TPO
- ▼ **Additional Product Needed:** Cleaner
- ▼ **Size:** 30" x 50'
- ▼ **Color:** Grey
- ▼ **Primary use:** Protect field membrane in high traffic areas



TPO 3" Seam Tape (White)

- ▼ **Category:** TPO
- ▼ **Additional Product Needed:**
Cleaner & Primer, GenFlex TPO Membrane
- ▼ **Size:**
 - ▼ 3" x 100'
 - ▼ **New Size – 3" x 50'**
- ▼ **Per carton/unit:**
 - ▼ 3" x 100' 4 rolls per ctn.
 - ▼ **New Packaging - 3" x 50' – 6 rolls per ctn.**
- ▼ **Primary use:** Membrane seaming for Peel & Stick (HW) systems



Peel & Stick TPO Cover Tape Kit

- ▼ **Category:** TPO
- ▼ **Additional Product Needed:** Cleaner & Primer
- ▼ **Size:** 1 kit per ctn.
- ▼ **Per carton/unit:** Kit includes:
 - ▼ **2 rolls cover tape**
 - ▼ **White edge caulk (1 tube)**
 - ▼ **Scrub pads (4) & handle (1)**
- ▼ **Primary use:** Strip-in metal flanges
- ▼ **Secondary Use:** Make minor repairs on GenFlex TPO systems



New Size- Peel & Stick TPO Cover Tape

- ▼ **Category:** TPO
- ▼ **Additional Product Needed:** Cleaner & Primer, White edge caulk, Scrub pads (4) & handle
- ▼ **Size:** 5.5" x 25'
- ▼ **Per carton/unit:**
 - ▼ 6 rolls per ctn.
- ▼ **Primary use:** Strip-in metal flanges
- ▼ **Secondary Use:** Make minor repairs on GenFlex TPO systems



***NEW Product* - FlexWhite Peel & Stick (SA) Flashing**

- ▼ **Category:** TPO
- ▼ **Additional Product Needed:**
Cleaner & Primer, GenFlex
TPO Membrane
- ▼ **Size:** 12" x 25'
- ▼ **Per carton/unit:** 1 roll per ctn.
- ▼ **Primary use:** Field fabricated
corners, pitch pockets, and
pipes for TPO and TPO Peel &
Stick Peel systems

**(Not available for 15 and 20 year System
Warranties)**



***NEW Product* Peel & Stick RMA**

- ▼ **Category:** TPO
- ▼ **Additional Product Needed:** Cleaner, Primer, Scrub Pad & Handle
- ▼ **Size:** 10" x 100' with two 3" wide strips of seam tape laminated along its length
- ▼ **Per carton/unit:** 1 rolls per ctn.
- ▼ **Primary use:** Membrane securement



NEW Product

TPO Peel & Stick RPS with 3" Tape

- ▼ **Category:** TPO
- ▼ **Additional Product Needed:** Cleaner, Primer, Scrub Pad & Handle
- ▼ **Size:** 6" with 3" tape x 100'
- ▼ **Per carton/unit:** 2 rolls per ctn.
- ▼ **Primary use:** Membrane base securement



Metal Edgings and Copings



Shop Fabricated Metal

- ▼ The metalwork must be shop or factory formed or extruded.
- ▼ The metalwork must be configured and installed in accordance with SMACNA guidelines and NRCA installation instructions.
- ▼ Minimum requirements regarding metalwork material are, 24 ga (0.61 mm) steel or 0.040" (1.02 mm) aluminum (mill finished, pre-finished or anodized).
- ▼ Unless specifically agreed to in writing by the GenFlex Technical Department prior to installation, metalwork manufactured by others is not included in the GenFlex warranty coverage.



GenFlex Metal

- ▼ GenFlex offers a wide selection of engineered coping and edgings that are ANSI/SPRI ES-1, FM and Miami Dade compliant.
- ▼ The ANSI/SPRI ES-1 Standard addresses copings and horizontal roof edges. The following factors are considered in designing a roof edge:
 - ▼ Structural Integrity of the substrate that anchors the edge
 - ▼ Wind Resistance of the edge detail
 - ▼ Materials Specification
- ▼ GenFlex Metal Edgings and Metal Copings are required on all Projects that require a High Wind Speed System Warranty.
- ▼ Highly Recommended for all 20 Year Systems Warranties
- ▼ Recommended for all Systems Warranties

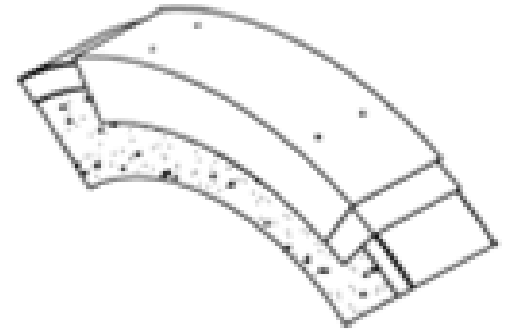


GenFlex Metal

Fascia



Arched Coping



Coping



Final Questions?

Thank you!

