

# WHAT'S NEW

## NEW PRODUCT BULLETIN

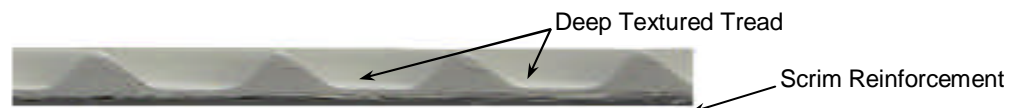
March 26, 2012

To: GenFlex Valued Customers  
Subject: New Products – GenFlex TPO Walkway Pad

GenFlex is pleased to introduce the GenFlex TPO Walkway Pad, complementing our full line of GenFlex TPO rooftop accessories. The walkway pad is scrim reinforced and composed of thermoplastic material compatible with GenFlex TPO membranes. Produced in 30" (.076m) wide by 50' (15m) long rolls, the walkway pad has a highly reflective, white, textured surface and a smooth bottom for easy welding and installation.

### Features and Benefits:

- Protects the roofing system from frequent rooftop traffic
  - Perfect for use at all access points and around all rooftop equipment
  - Provides traffic flow for rooftop maintenance
- Reflective white surface
  - Does not diminish the reflectivity of the roofing surface compared to darker pads
  - Reduces thermal expansion and contraction between the walkway pad and the TPO membrane, providing a smooth walking surface
- Textured cross hatch allows for visibility and increased slip resistance
- Scrim reinforcement provides dimensional stability and increased durability
- Fully, heat-weldable TPO composition
- Contains recycled materials
- Can be used to protect the roofing membrane from photovoltaic or vegetative overburden systems

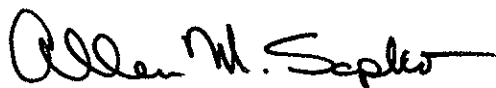


Cross Section View

Please Note: With the introduction of the GenFlex TPO Walkway Pad (Item #W590030000), the GenFlex TPO Heat Weldable Walkway Pad (Item #W590030096) will no longer be offered.

The GenFlex TPO walkway pad continues to show GenFlex's commitment to providing rooftop accessories that help keep your roof performing at its highest level, proving yet again that "Nobody Covers you Better." For additional information please visit the GenFlex website at [www.GenFlex.com](http://www.GenFlex.com) or contact your [Territory Sales Manager](#).

Sincerely,



Allen M. Sopko  
Thermoplastic Product Manager

**Single Ply Solutions for Over a Quarter Century™**

