


The logo for Firestone Building Products is centered on a light beige background with a subtle, wavy texture. The word "Firestone" is written in a large, bold, red, sans-serif font. Below it, the words "BUILDING PRODUCTS" are written in a smaller, bold, black, sans-serif font, underlined with two horizontal lines. The entire logo is framed by a curved, dark red border that sweeps across the top and bottom of the image.

Firestone

BUILDING PRODUCTS



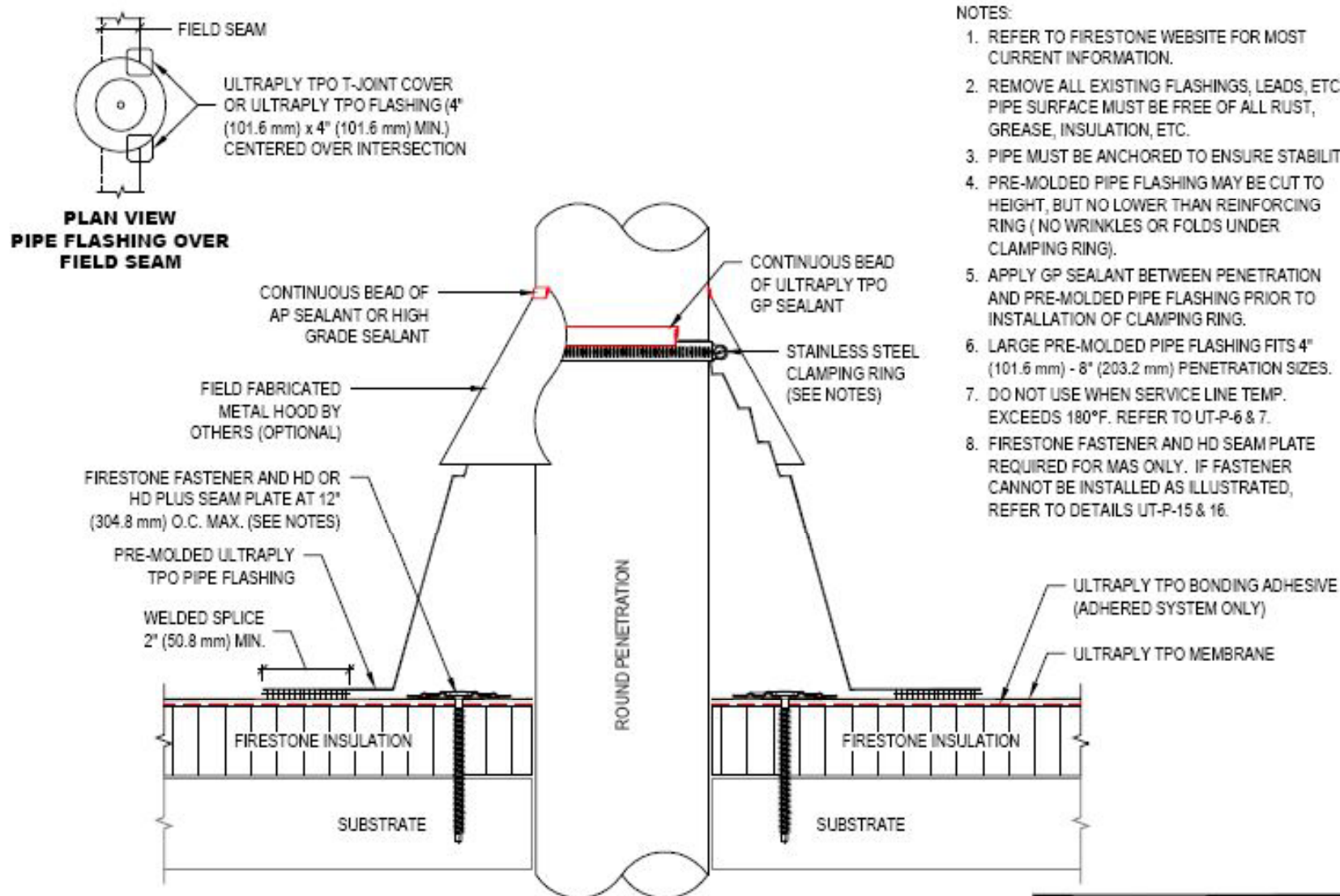
TPO

Penetrations

Firestone
BUILDING PRODUCTS



Installing a Pipe Boot:



NOTES:

1. REFER TO FIRESTONE WEBSITE FOR MOST CURRENT INFORMATION.
2. REMOVE ALL EXISTING FLASHINGS, LEADS, ETC. PIPE SURFACE MUST BE FREE OF ALL RUST, GREASE, INSULATION, ETC.
3. PIPE MUST BE ANCHORED TO ENSURE STABILITY.
4. PRE-MOLDED PIPE FLASHING MAY BE CUT TO HEIGHT, BUT NO LOWER THAN REINFORCING RING (NO WRINKLES OR FOLDS UNDER CLAMPING RING).
5. APPLY GP SEALANT BETWEEN PENETRATION AND PRE-MOLDED PIPE FLASHING PRIOR TO INSTALLATION OF CLAMPING RING.
6. LARGE PRE-MOLDED PIPE FLASHING FITS 4" (101.6 mm) - 8" (203.2 mm) PENETRATION SIZES.
7. DO NOT USE WHEN SERVICE LINE TEMP. EXCEEDS 180°F. REFER TO UT-P-6 & 7.
8. FIRESTONE FASTENER AND HD SEAM PLATE REQUIRED FOR MAS ONLY. IF FASTENER CANNOT BE INSTALLED AS ILLUSTRATED, REFER TO DETAILS UT-P-15 & 16.



Installing a Pipe Boot:

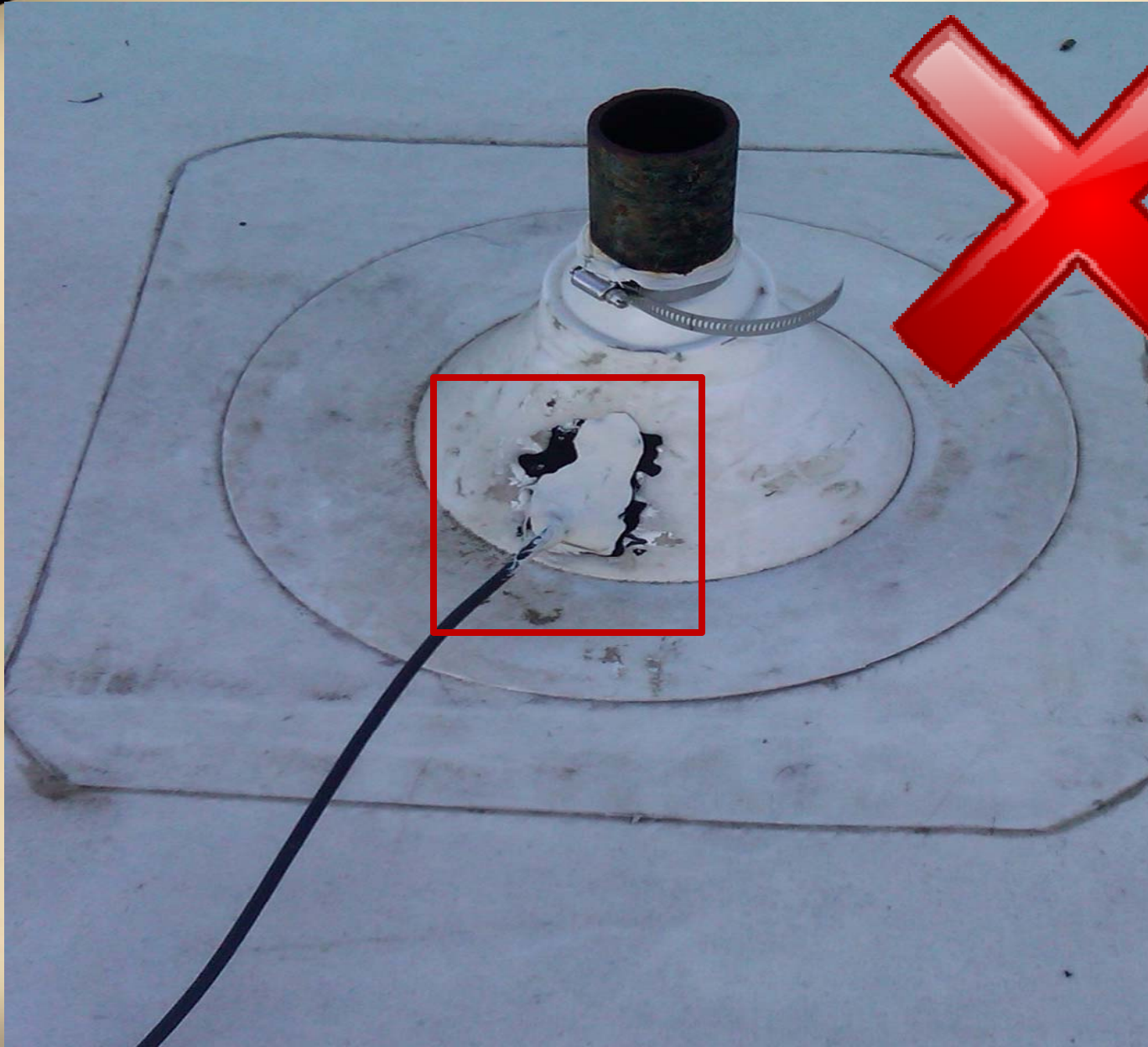


Are these complete?



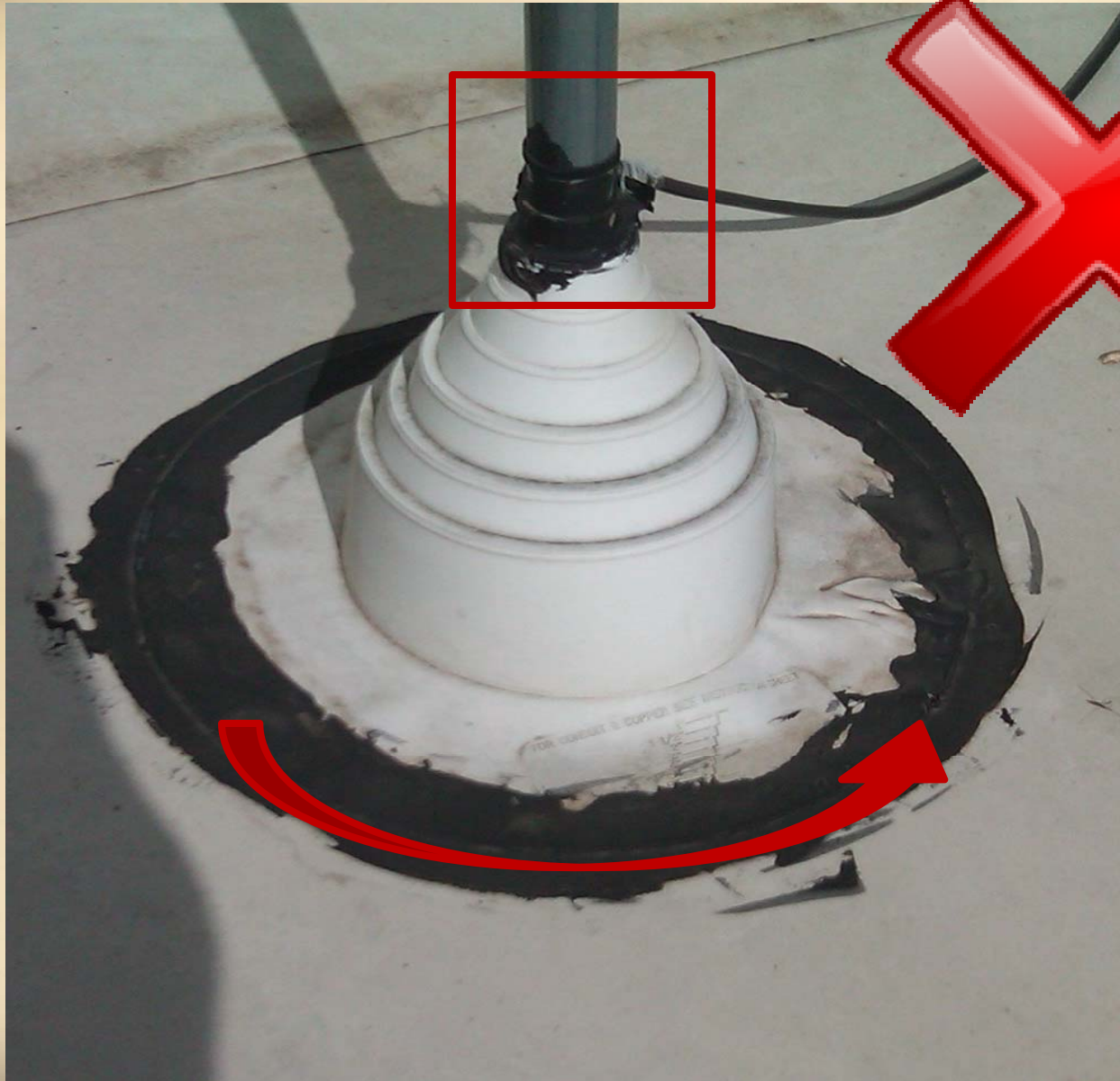


Right or Wrong?





Right or Wrong?



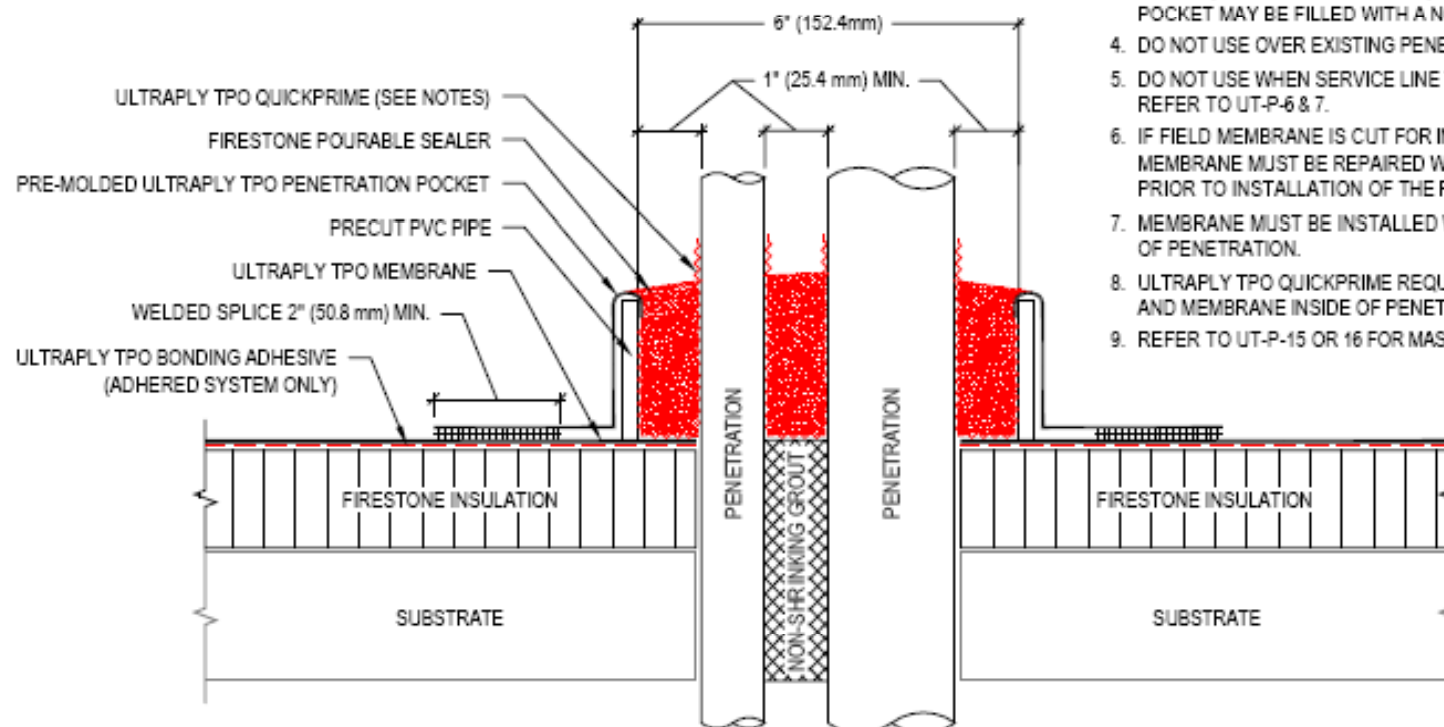


Right or Wrong?





Installing a Penetration Pocket:

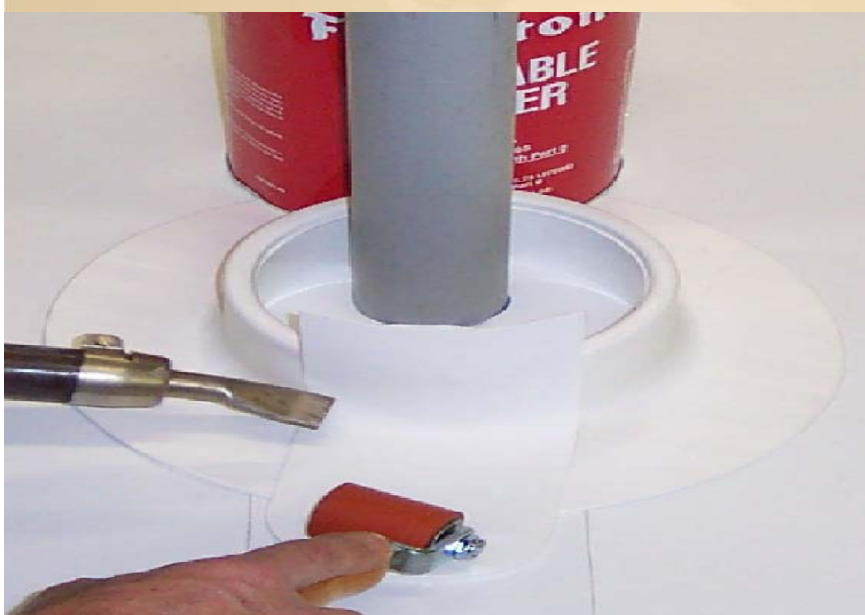
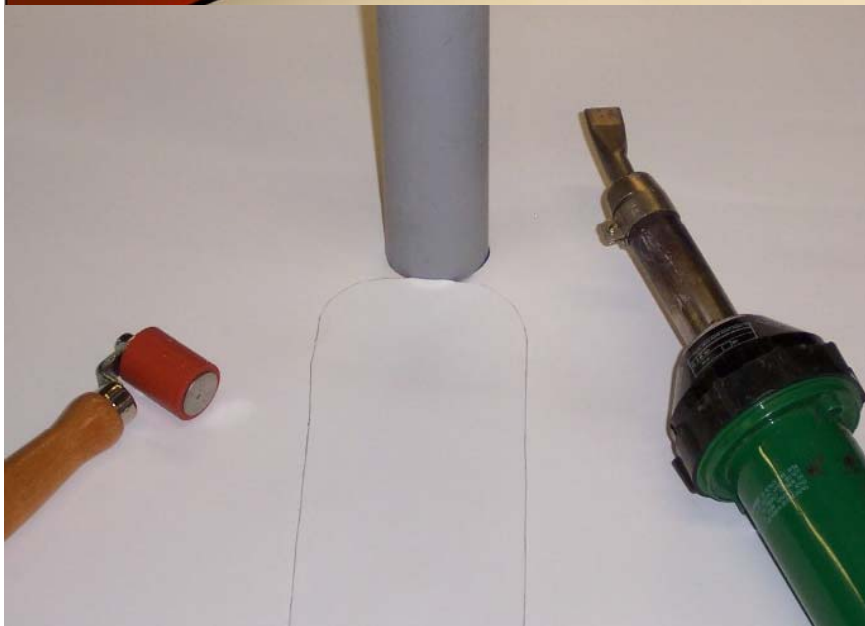


NOTES:

1. REFER TO FIRESTONE WEBSITE FOR MOST CURRENT INFORMATION.
2. REMOVE ALL EXISTING FLASHINGS, LEADS, ETC. PIPE SURFACE MUST BE FREE OF ALL RUST, GREASE, INSULATION, ETC.
3. FIRESTONE POURABLE SEALER MOUNDED TO SHED WATER (MINIMUM DEPTH OF 2" (50.8 mm), REMAINDER OF POCKET MAY BE FILLED WITH A NON - SHRINKING GROUT.
4. DO NOT USE OVER EXISTING PENETRATION POCKETS.
5. DO NOT USE WHEN SERVICE LINE TEMP. EXCEEDS 180°F. REFER TO UT-P-6 & 7.
6. IF FIELD MEMBRANE IS CUT FOR INSTALLATION, THE MEMBRANE MUST BE REPAIRED WITH TPO MEMBRANE PRIOR TO INSTALLATION OF THE PENETRATION POCKET.
7. MEMBRANE MUST BE INSTALLED WITHIN 1/2" (12.7 mm) OF PENETRATION.
8. ULTRAPLY TPO QUICKPRIME REQUIRED ON PENETRATIONS AND MEMBRANE INSIDE OF PENETRATION POCKET.
9. REFER TO UT-P-15 OR 16 FOR MAS.

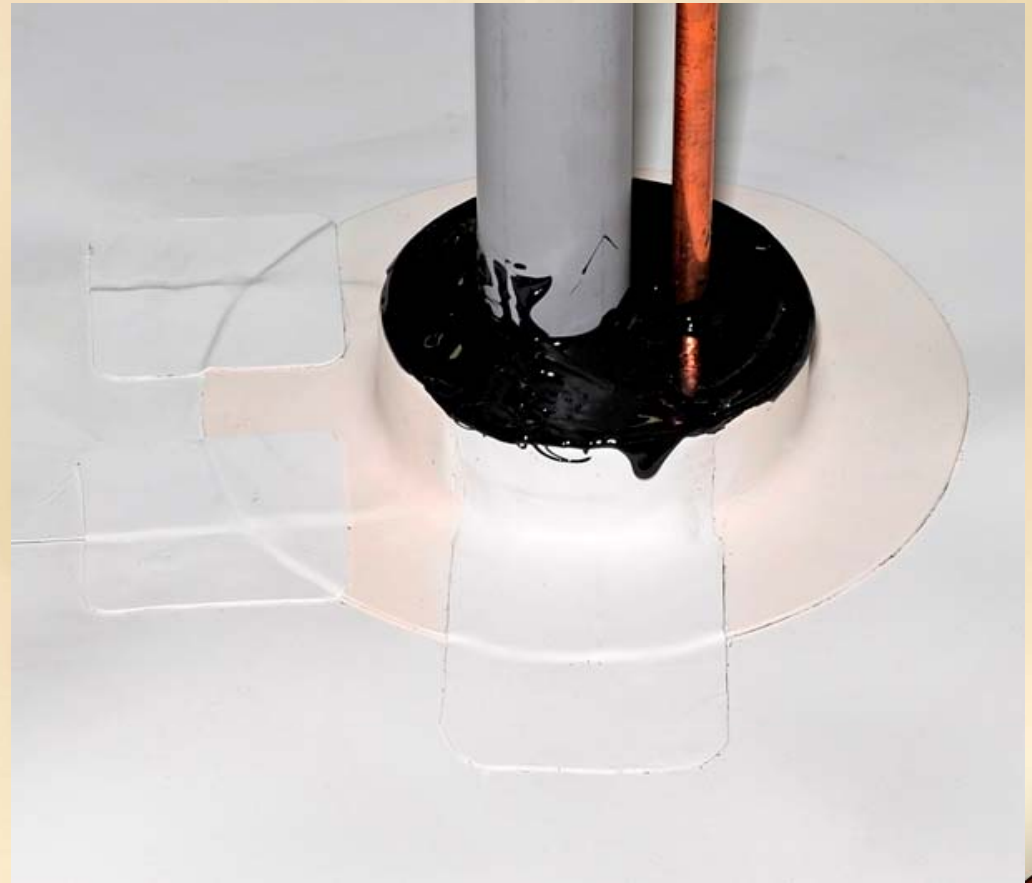


Installing a Penetration Pocket:



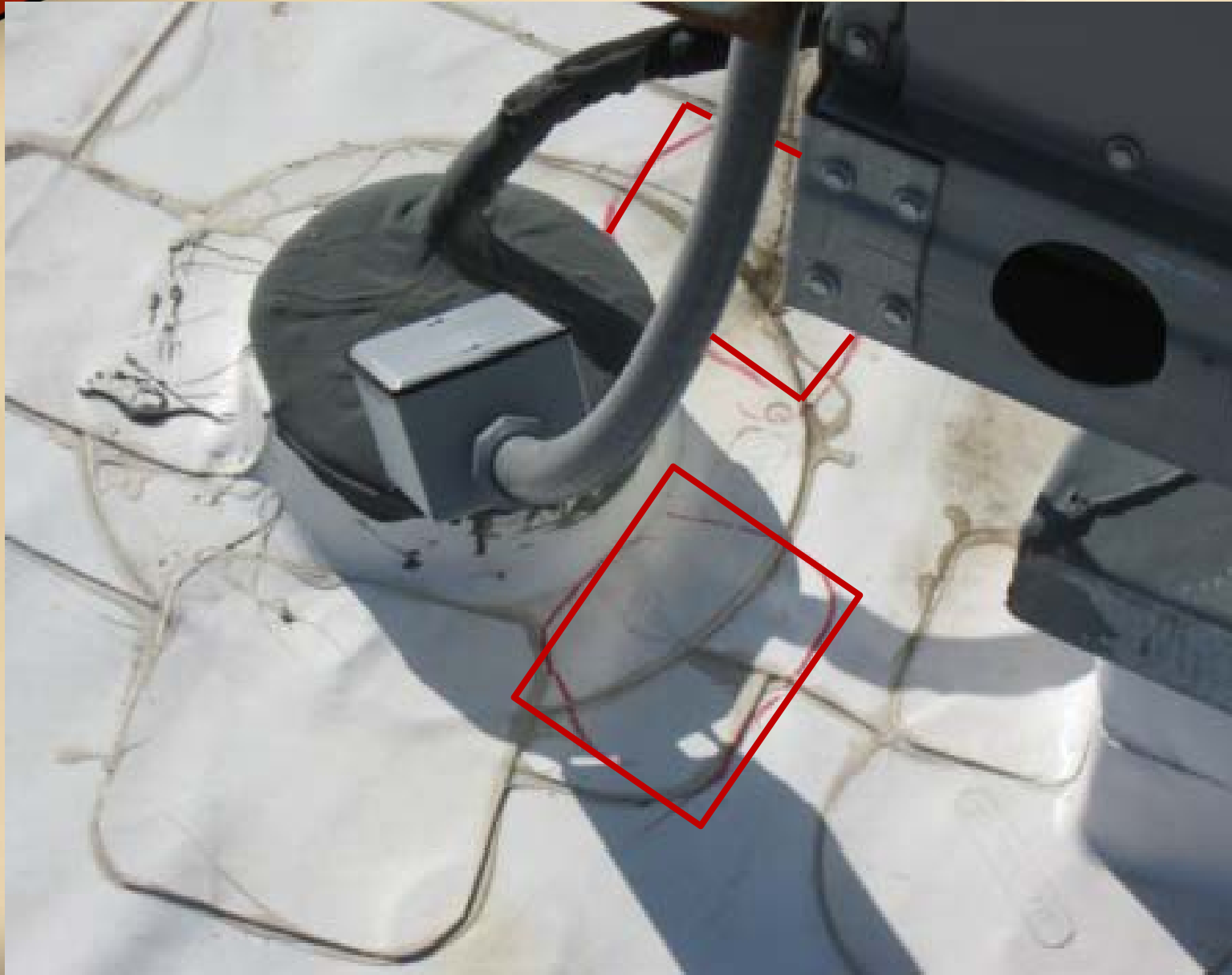


Installing a Penetration Pocket:





Is this complete?





Right or Wrong?



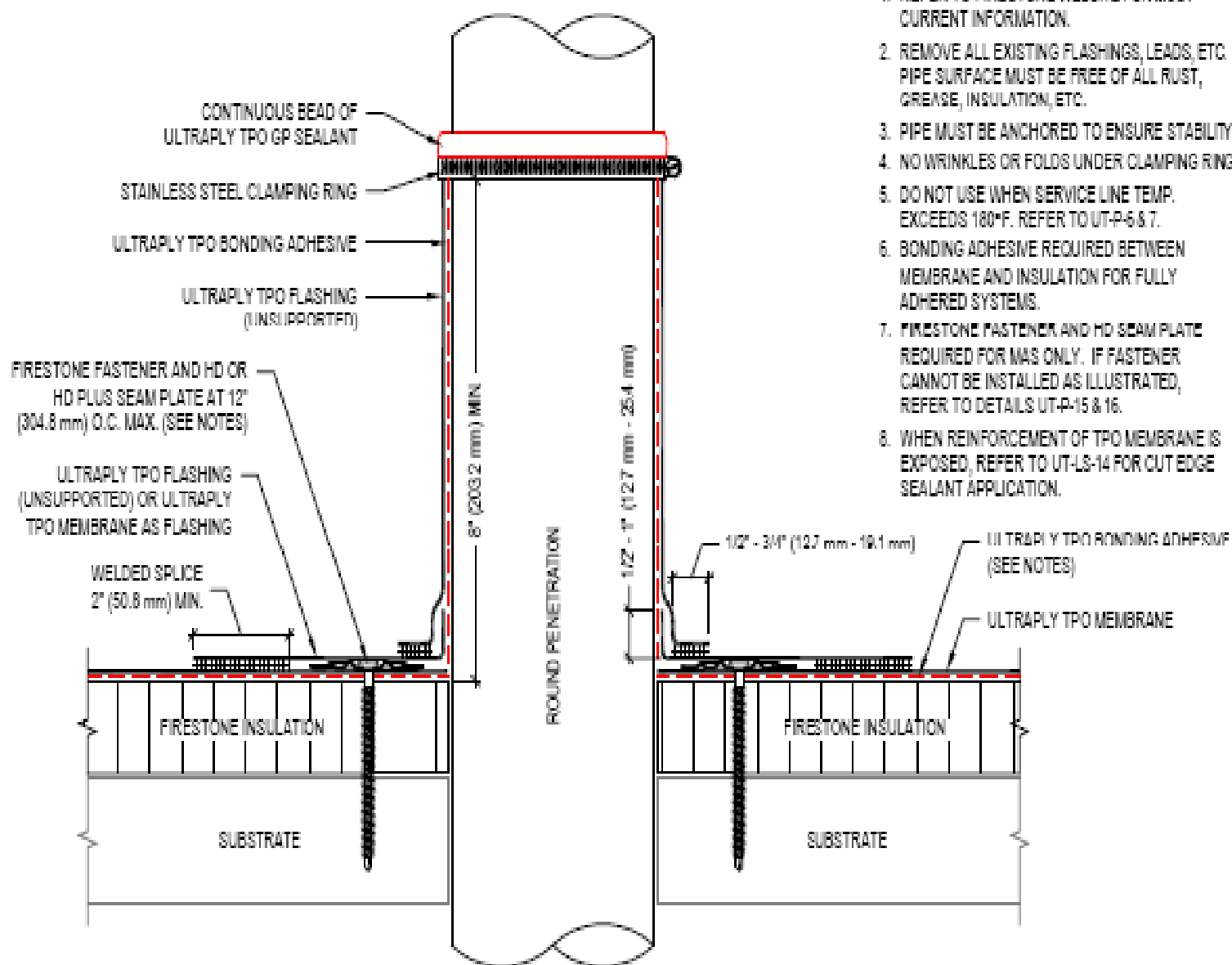


Right or Wrong?





Installing a Field Fabricated Pipe Flashing:



NOTES:

1. REFER TO FIRESTONE WEBSITE FOR MOST CURRENT INFORMATION.
2. REMOVE ALL EXISTING FLASHINGS, LEADS, ETC. PIPE SURFACE MUST BE FREE OF ALL RUST, GREASE, INSULATION, ETC.
3. PIPE MUST BE ANCHORED TO ENSURE STABILITY.
4. NO WRINKLES OR FOLDS UNDER CLAMPING RING.
5. DO NOT USE WHEN SERVICE LINE TEMP. EXCEEDS 180°F. REFER TO UT-P-6 & 7.
6. BONDING ADHESIVE REQUIRED BETWEEN MEMBRANE AND INSULATION FOR FULLY ADHERED SYSTEMS.
7. FIRESTONE FASTENER AND HD SEAM PLATE REQUIRED FOR MAS ONLY. IF FASTENER CANNOT BE INSTALLED AS ILLUSTRATED, REFER TO DETAILS UT-P-15 & 16.
8. WHEN REINFORCEMENT OF TPO MEMBRANE IS EXPOSED, REFER TO UT-L3-14 FOR CUT EDGE SEALANT APPLICATION.



Installing a Field Fabricated Pipe Flashing:





Right or Wrong?





Right or Wrong?





Right or Wrong?





Right or Wrong?



Right or Wrong?

