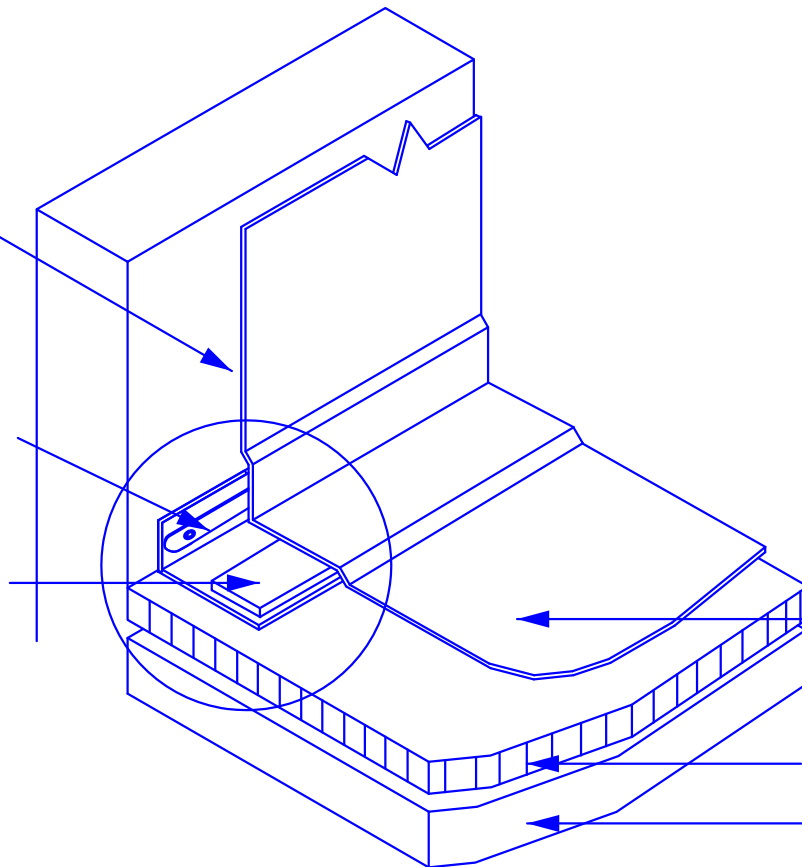


GenFlex EPDM
Bonding
Adhesive
See Note #1

GenFlex 2" (51 mm)
Plate or Bar Anchor
with Approved
Fasteners
12" (305 mm) o.c.
See Note #2

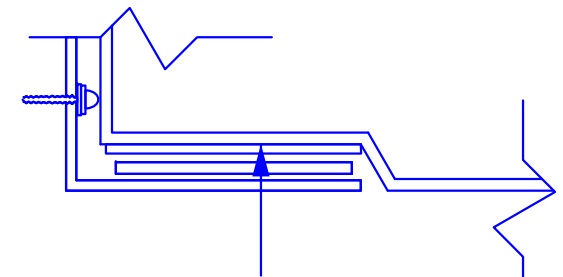
6" (152 mm) Wide
GenFlex Peel & Stick
RPS Strips
See Note #3



GenFlex EPDM
Membrane

GenFlex ISO

Approved Substrate



GenFlex Primer Applied to
Underside of EPDM. Thoroughly
Clean the EPDM with GenFlex
EPDM Cleaner Prior to Applying
GenFlex Primer.

1. All parapet walls and roof curbs must be suitable for flashing, e.g. clean, tight, smooth, no cracks, etc.
2. Polymer batten strips cannot be used for attachments into masonry wall substrates. Use only on smooth surfaces, e.g. wood or insulation.
3. Instead of Peel & Stick RPS strip, standard RPS strip may be used in conjunction with G-400 Seam Adhesive following GenFlex Splice application methods.



Vertically Secured Peel & Stick RPS

EPDM Systems

ACCEPTABLE SYSTEMS:
All Roof Systems

MAXIMUM WARRANTY: **10 Years**

ISSUE / REVISION
DATE:
6-22-2015

NOT TO SCALE

DETAIL NO.

E-2.09