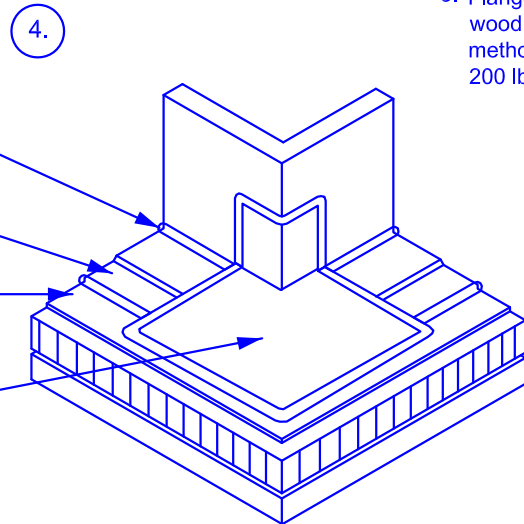
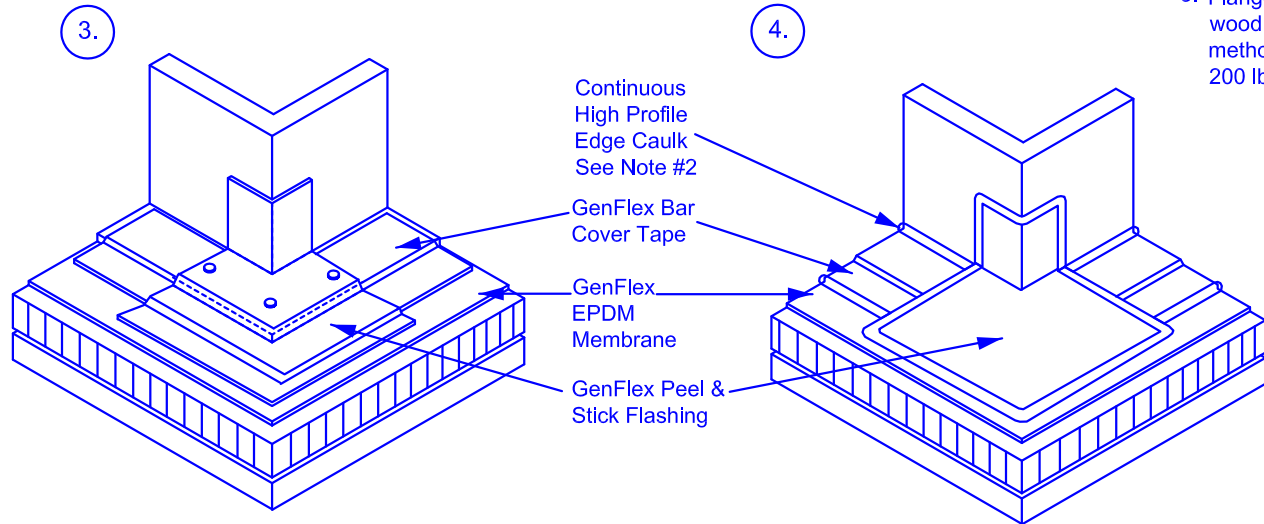


1. Welded curb flashings with flange only strip-in require a separate corner flashing.
2. All edges of flashing material require GenFlex Edge Caulk.
3. Flange must be secured through GenFlex EPDM membrane to wood nailer and set in bead of GenFlex Water Stop. Securement method must meet industry standards and be capable of resisting 200 lb (890 N) of pullout resistance per linear foot.



Welded Watertight Curb/Skylight Flashing (Option A)

EPDM Systems

ACCEPTABLE SYSTEMS:
All Systems

MAXIMUM WARRANTY: **20 Years**

ISSUE / REVISION
DATE:
6-24-2015

NOT TO SCALE

DETAIL NO.

E-3.05