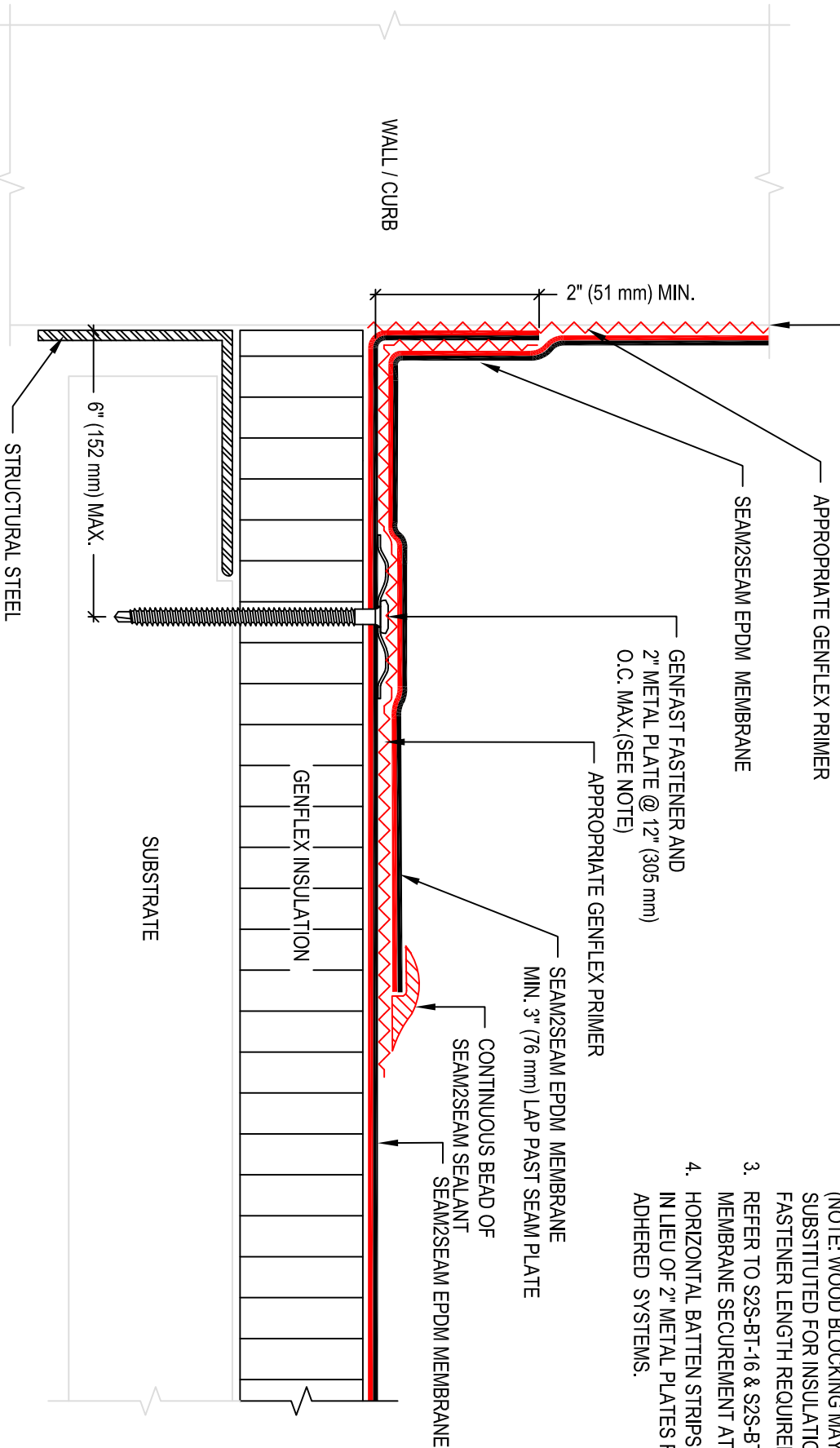


USE APPROPRIATE TERMINATION



- NOTE:**
1. REFER TO GENFLEX WEBSITE FOR THE MOST CURRENT INFORMATION.
 2. MAXIMUM 6" (152 mm) LONG FASTENERS. (NOTE: WOOD BLOCKING MAY BE SUBSTITUTED FOR INSULATION TO REDUCE FASTENER LENGTH REQUIREMENTS).
 3. REFER TO S2S-BT-16 & S2S-BT-17 FOR MEMBRANE SECUREMENT AT CORNERS.
 4. HORIZONTAL BATTEN STRIPS MAY BE USED IN LIEU OF 2" METAL PLATES FOR MAS AND ADHERED SYSTEMS.



**BASE TIE-IN WITH 2" METAL PLATES
DECK OBSTRUCTION**

GENFLEX™
ACCEPTABLE SYSTEMS: **SEAM2SEAM™ EPDM**

GENFLEX: (800) 443-4272 www.genflex.com

MAXIMUM WARRANTY: 20 Years

ISSUE / REVISION
DATE:

06/01/2020

DETAIL NO.

S2S-BT-10

NOT TO SCALE