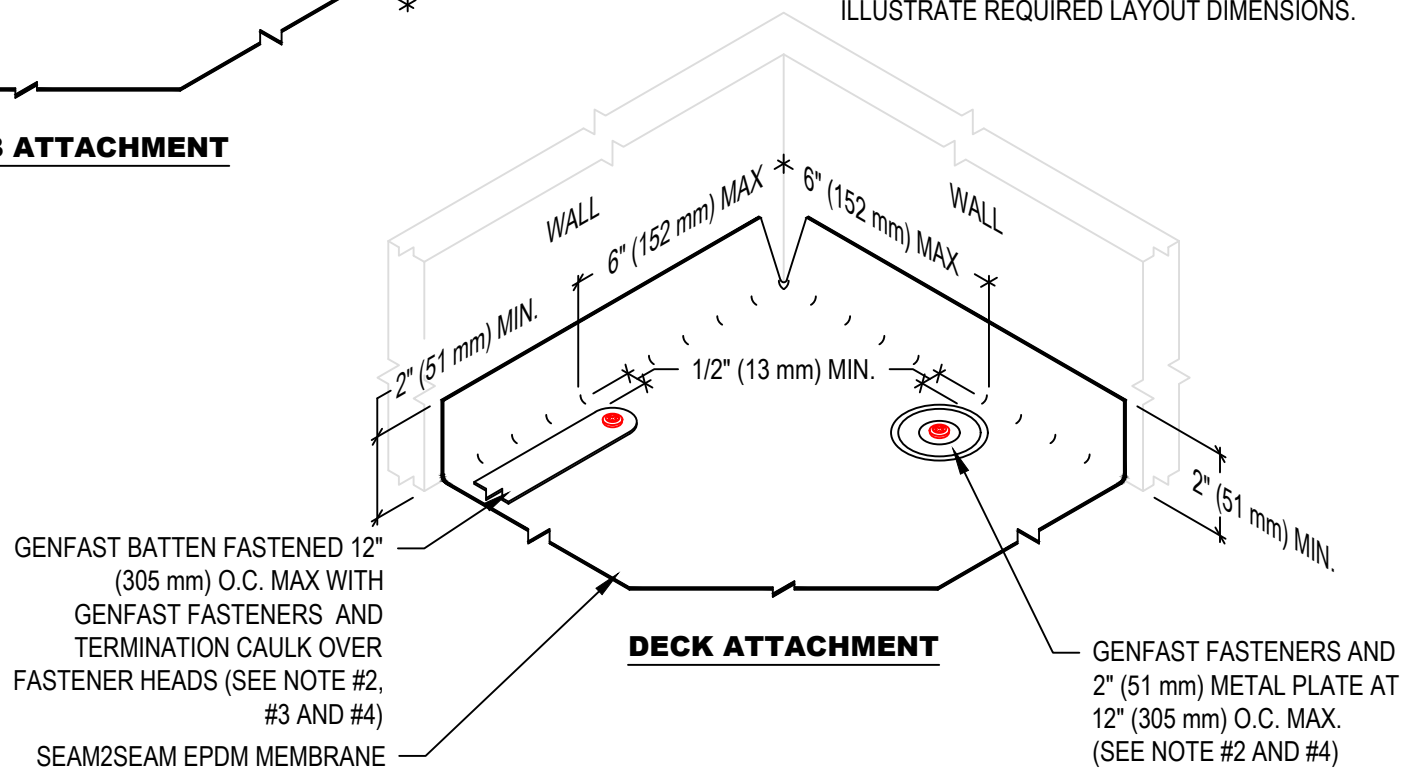


NOTE:

1. REFER TO GENFLEX WEBSITE FOR THE MOST CURRENT INFORMATION.
2. MAXIMUM 6" (152 mm) LONG FASTENERS. (NOTE: WOOD BLOCKING MAY BE SUBSTITUTED FOR INSULATION TO REDUCE FASTENER LENGTH REQUIREMENTS.
3. WHEN GENFAST BATTEN STRIP IS USED TO SECURE SEAM2SEAM MEMBRANE TO THE WALL:
 -POLYMER BATTEN STRIP OR METAL ANCHOR BAR MAY BE USED FOR WOOD OR METAL SUBSTRATE.
 -METAL ANCHOR BAR MUST BE USED WITH MASONRY SUBSTRATE.
4. GENFAST BATTEN STRIP OR 2" (51 mm) METAL PLATES ARE ACCEPTABLE FOR FASTENING SEAM2SEAM EPDM MEMBRANE. BOTH ARE SHOWN IN ORDER TO ILLUSTRATE REQUIRED LAYOUT DIMENSIONS.

BASE FLASHING AND TERMINATION NOT SHOWN FOR CLARITY. REFER TO APPROPRIATE TERMINATION & BASE TIE-IN DETAILS

THIS DETAIL IS FOR LAYOUT PURPOSE ONLY AND IS NON-SPECIFIC. REFER TO APPROPRIATE BASE TIE-IN DETAILS FOR SYSTEM SPECIFIC SECUREMENT OPTIONS



MEMBRANE SECUREMENT AT INSIDE CORNER

GENFLEX™

ACCEPTABLE SYSTEMS: **SEAM2SEAM™ EPDM**

MAXIMUM WARRANTY: 20 Years

ISSUE / REVISION DATE:

04/06/2020

DETAIL NO.

S2S-BT-17