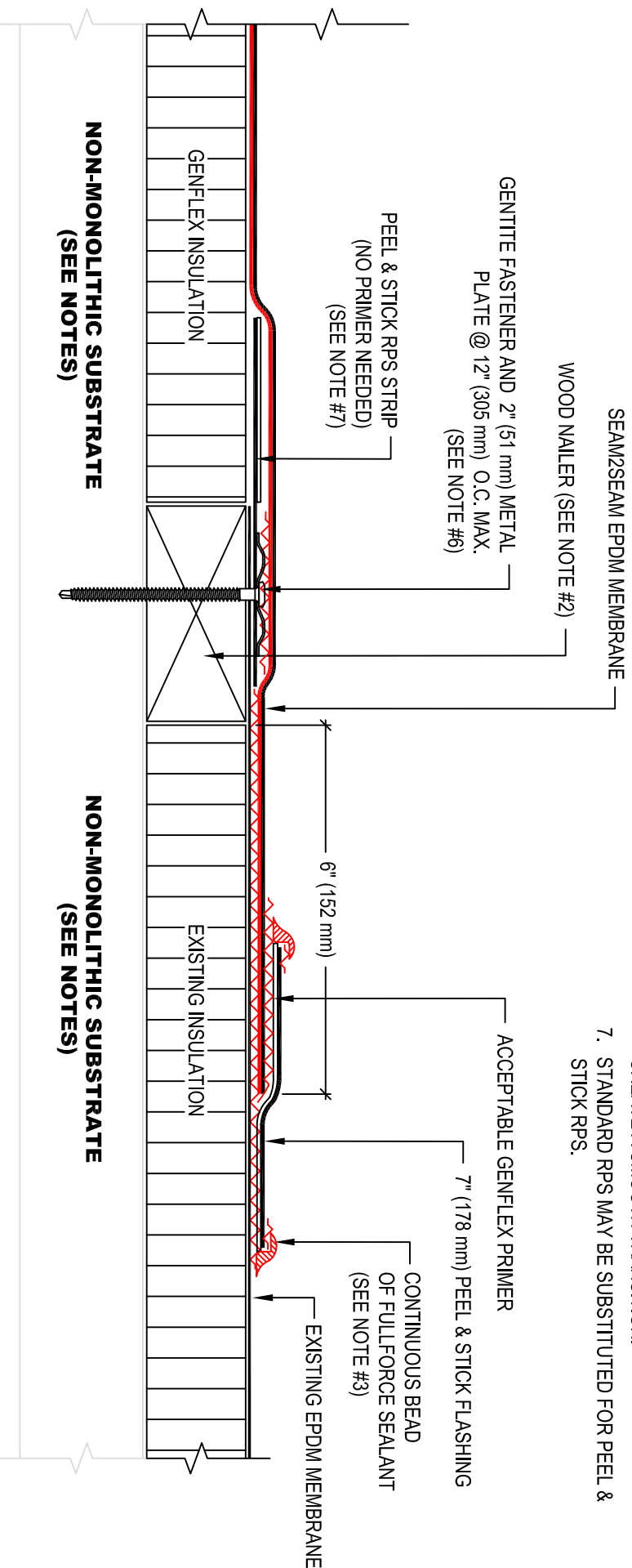


- NOTE:**
1. REFER TO GENFLEX WEBSITE FOR THE MOST CURRENT INFORMATION.
 2. WOOD NAILER MUST BE INSTALLED TO MEET APPLICABLE BUILDING CODES OR 200 lb PER LINEAR FOOT MINIMUM IN ANY GIVEN DIRECTION.
 3. REFER TO S2S-L-S-9 FOR SEAM2SEAM SEALANT APPLICATION.
 4. REFER TO S2S-BT-24 FOR ADDITIONAL REQUIREMENTS FOR METAL ROOF DECKS.
 5. BATTEN STRIP MAY BE USED IN LIEU OF 2" (51 mm) METAL PLATES. REFER TO "BT" DETAILS FOR SPECIFIC BASE TIE-IN INFORMATION, REQUIREMENTS, AND OPTIONS.
 6. WHEN CHANGE IN ELEVATION OCCURS BETWEEN SYSTEMS, USE APPROPRIATE TAPERED INSULATION TO CREATE A SMOOTH TRANSITION.
 7. STANDARD RPS MAY BE SUBSTITUTED FOR PEEL & STICK RPS.



TIE-IN TO EXISTING ROOF SYSTEMS NOT WARRANTED BY GENFLEX



TIE IN SEAM2SEAM SYSTEM TO EXISTING EPDM SYSTEM (NON-MONOLITHIC SUBSTRATE)

GENFLEX™ ACCEPTABLE SYSTEMS: SEAM2SEAM™ EPDM

GENFLEX: (800) 443-4272 www.genflex.com

MAXIMUM WARRANTY: 20 Years

ISSUE / REVISION DATE:

06/01/2020

DETAIL NO.

S2S-BT-19

NOT TO SCALE