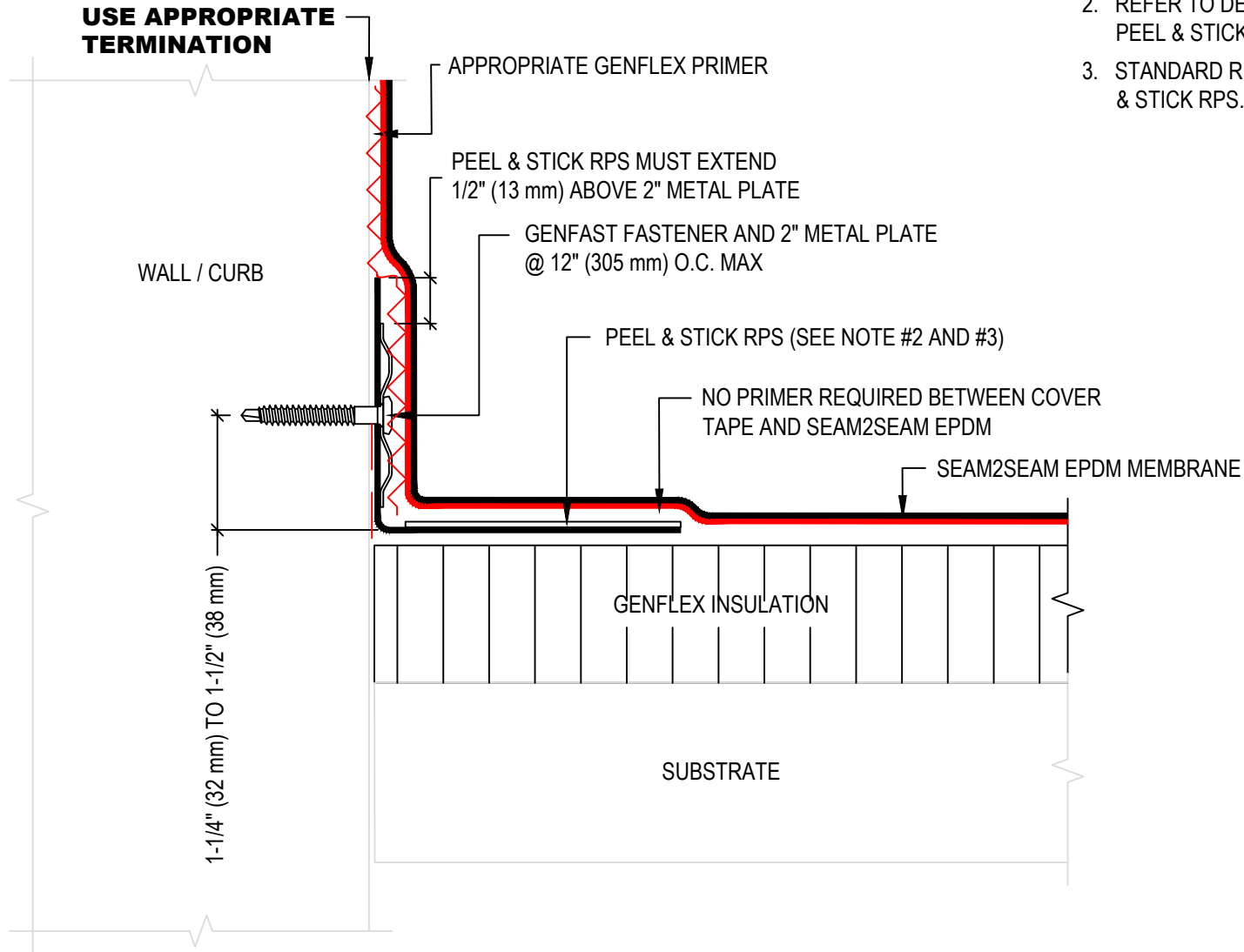


NOTE:

1. REFER TO GENFLEX WEBSITE FOR THE MOST CURRENT INFORMATION.
2. REFER TO DETAIL S2S-BT-14 AND S2S-BT-15 FOR PEEL & STICK RPS LAYOUT AT CORNERS.
3. STANDARD RPS MAY BE SUBSTITUTED FOR PEEL & STICK RPS.



**BASE TIE-IN WITH 2" METAL PLATES AND
PEEL & STICK RPS FASTENED TO WALL / CURB**

GENFLEX™

ACCEPTABLE SYSTEMS: **SEAM2SEAM™ EPDM**

MAXIMUM WARRANTY: 20 Years

ISSUE / REVISION
DATE:

04/06/2020

DETAIL NO.

S2S-BT-2

GENFLEX: (800) 443-4272 www.genflex.com

NOT TO SCALE