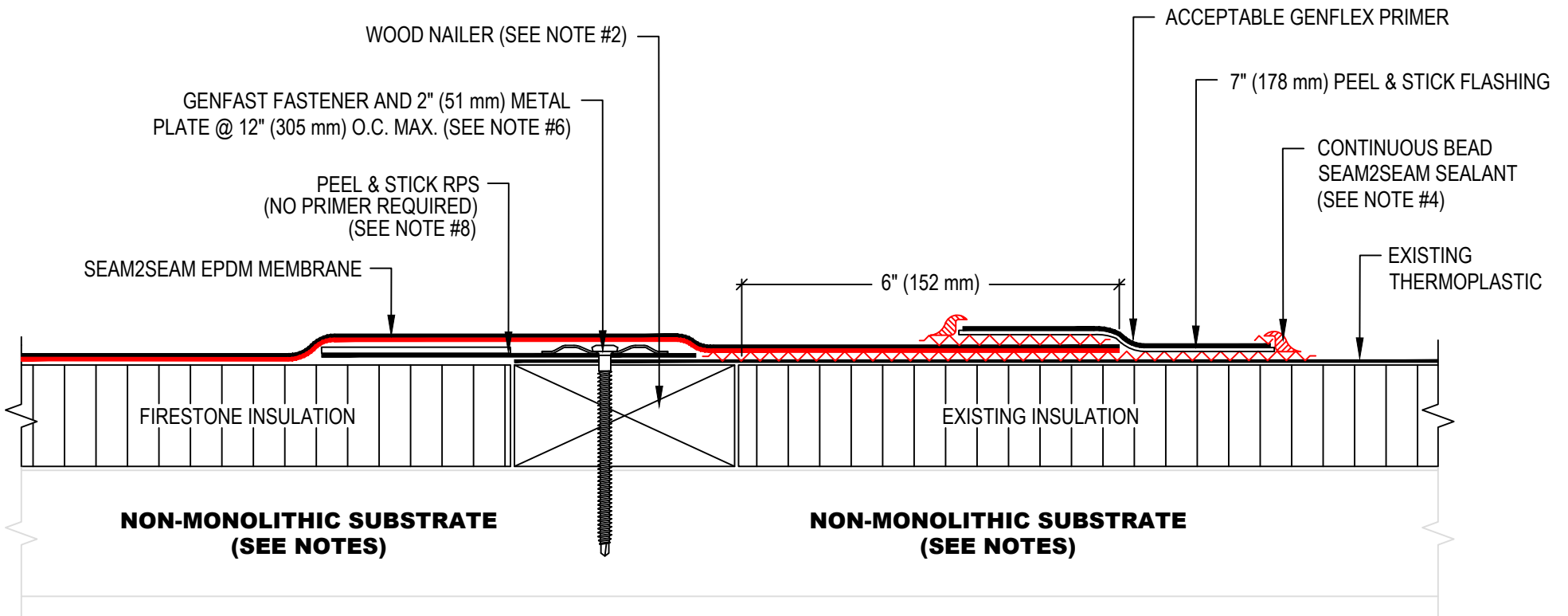


**NOTE:**

1. REFER TO GENFLEX WEBSITE FOR THE MOST CURRENT INFORMATION.
2. WOOD NAILER MUST BE INSTALLED TO MEET APPLICABLE BUILDING CODES OR 200 lb PER LINEAR FOOT MINIMUM IN ANY GIVEN DIRECTION.
3. REFER TO S2S-LS-9 FOR SEAM2SEAM SEALANT APPLICATION.
4. REFER TO S2S-BT-24 FOR ADDITIONAL REQUIREMENTS FOR METAL ROOF DECKS.
5. BATTEN STRIP MAY BE USED IN LIEU OF 2" (51 mm) METAL PLATES. REFER TO "BT" DETAILS FOR SPECIFIC BASE TIE-IN INFORMATION, REQUIREMENTS, AND OPTIONS.
6. WHEN CHANGE IN ELEVATION OCCURS BETWEEN SYSTEMS, USE APPROPRIATE TAPERED INSULATION TO CREATE A SMOOTH TRANSITION.
7. STANDARD RPS MAY BE SUBSTITUTED FOR PEEL & STICK RPS.



**TIE-IN TO EXISTING ROOF SYSTEM NOT WARRANTED BY GENFLEX.**



**TIE-IN SEAM2SEAM EPDM TO EXISTING THERMOPLASTIC  
(NON-MONOLITHIC SUBSTRATE)**

**GENFLEX™**

ACCEPTABLE SYSTEMS: **SEAM2SEAM™ EPDM**

GENFLEX: (800) 443-4272 www.genflex.com

MAXIMUM WARRANTY: 20 Years

ISSUE / REVISION  
DATE:

04/06/2020

NOT TO SCALE

DETAIL NO.

**S2S-BT-21**