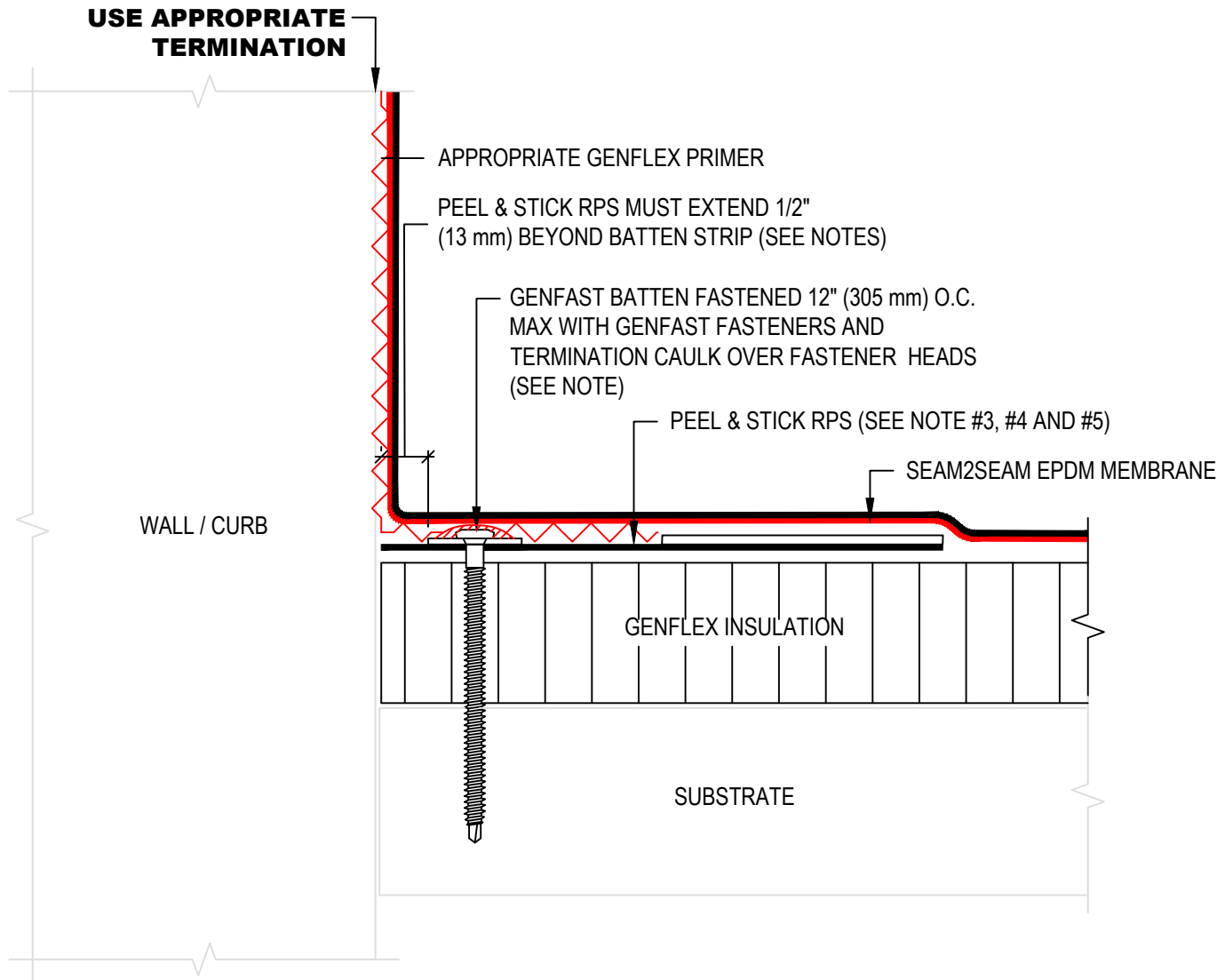


**NOTE:**

1. REFER TO GENFLEX WEBSITE FOR THE MOST CURRENT INFORMATION.
2. MAXIMUM 6" (152 mm) LONG FASTENERS (NOTE: WOOD BLOCKING MAY BE SUBSTITUTED FOR INSULATION TO REDUCE FASTENER LENGTH REQUIREMENTS.
3. IN CASE OF OBSTRUCTION REFER TO DETAIL S2S-BT-5.
4. REFER TO S2S-BT-14 AND S2S-BT-15 FOR PEEL & STICK RPS LAYOUTS AT CORNERS.
5. STANDARD RPS MAY BE SUBSTITUTED FOR PEEL & STICK RPS.



**BASE TIE-IN WITH QUICKSEAM RPF STRIP  
AND BATTEN FASTENED TO DECK**

**GENFLEX™**

ACCEPTABLE SYSTEMS: **SEAM2SEAM™ EPDM**

GENFLEX: (800) 443-4272 www.genflex.com

MAXIMUM WARRANTY: 20 Years

ISSUE / REVISION  
DATE:

04/06/2020

NOT TO SCALE

DETAIL NO.

**S2S-BT-3**