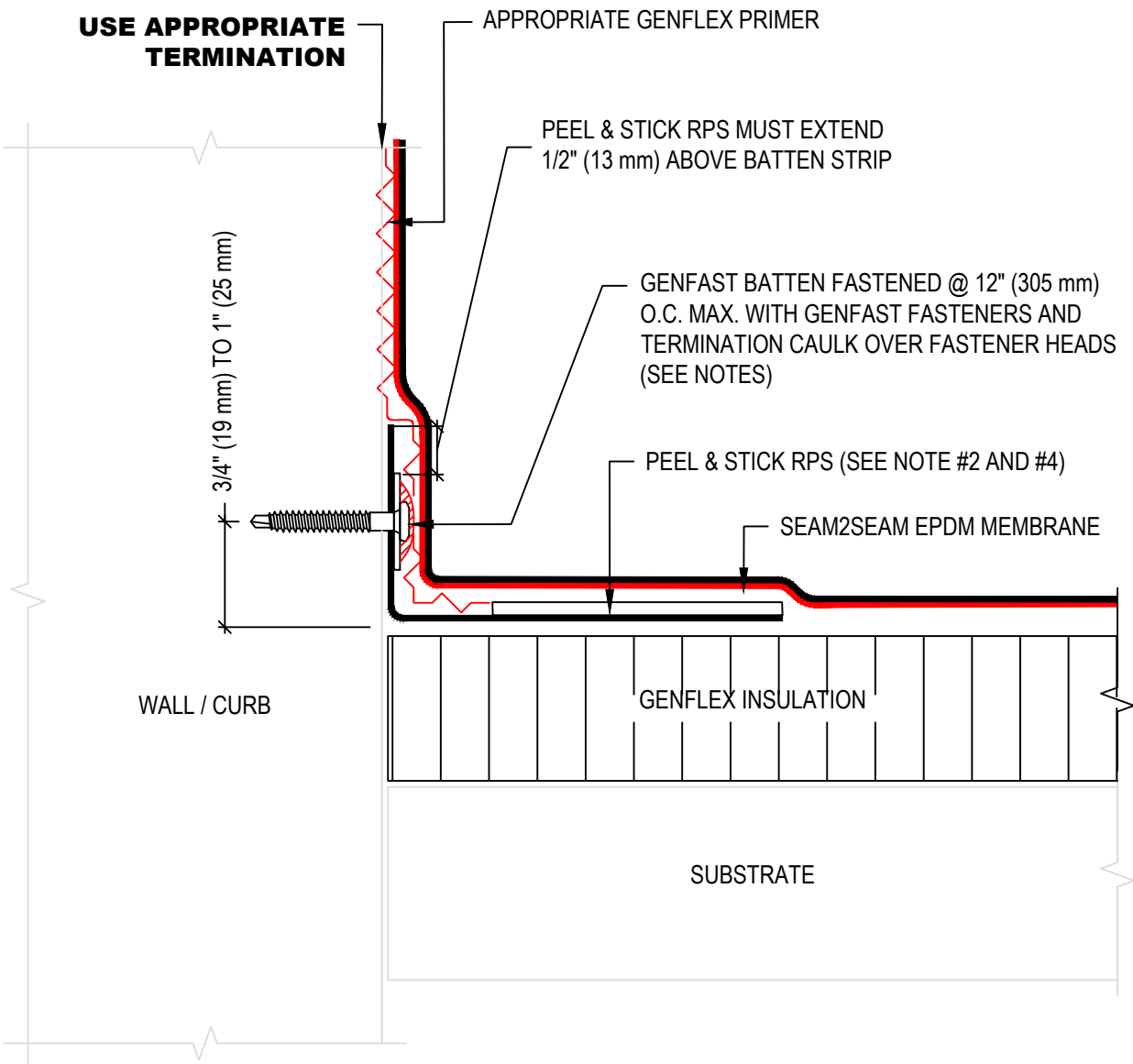


**USE APPROPRIATE
TERMINATION**



NOTE:

1. REFER TO GENFLEX WEBSITE FOR THE MOST CURRENT INFORMATION.
2. REFER TO DETAIL S2S-BT-14 AND S2S-BT-15 FOR PEEL & STICK RPS LAYOUT AT CORNERS.
3. POLYMER OR METAL BATTEN STRIP ACCEPTABLE FOR WOOD OR METAL SUBSTRATE. METAL ANCHOR BAR MUST BE USED WITH MASONRY SUBSTRATE.
4. STANDARD RPS MAY BE SUBSTITUTED FOR PEEL & STICK RPS.



**BASE TIE-IN WITH PEEL & STICK RPS
AND BATTEN FASTENED TO WALL / CURB**

GENFLEX™

ACCEPTABLE SYSTEMS: **SEAM2SEAM™ EPDM**

MAXIMUM WARRANTY: 20 Years

ISSUE / REVISION
DATE:

04/06/2020

DETAIL NO.

S2S-BT-4

GENFLEX: (800) 443-4272 www.genflex.com

NOT TO SCALE