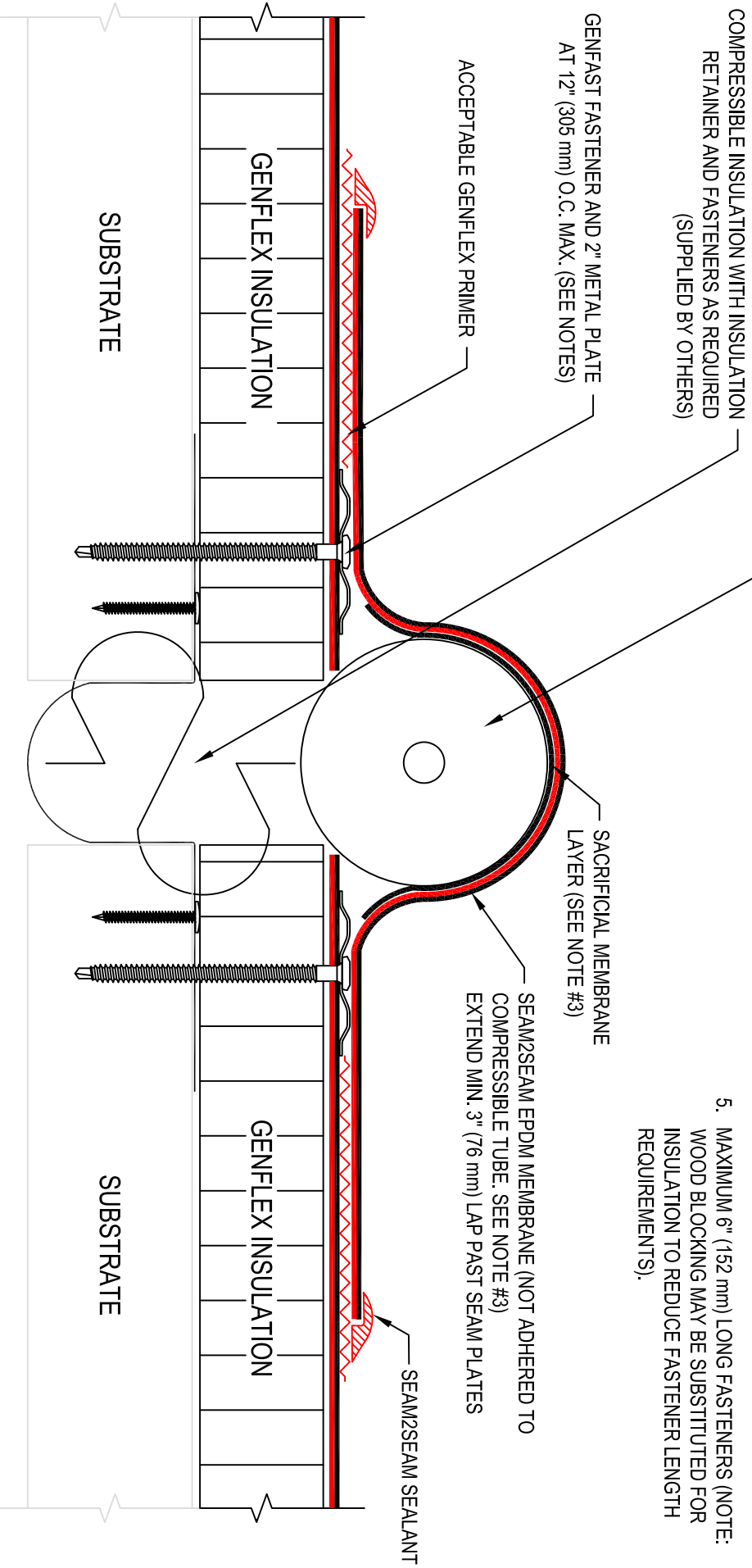


- NOTE:**
1. REFER TO GENFLEX WEBSITE FOR MOST CURRENT INFORMATION.
  2. COMPRESSIBLE TUBE (SUPPLIED BY OTHERS) DIAMETER MUST EXCEED THE DECK OPENING BY 50% MIN. OR DESIGNED MOVEMENT (WHICH EVER IS GREATER).
  3. INSTALL SACRIFICIAL EPDM MEMBRANE LAYER AGAINST SEAM2SEAM EPDM MEMBRANE TO PREVENT ADHESION TO COMPRESSIBLE TUBE.
  4. BATTEN STRIPS MAY BE USED IN LIEU OF 2" METAL PLATES. REFER TO "BT" DETAILS FOR SPECIFIC BASE TIE-IN INFORMATION, REQUIREMENTS AND OPTIONS.
  5. MAXIMUM 6" (152 mm) LONG FASTENERS (NOTE: WOOD BLOCKING MAY BE SUBSTITUTED FOR INSULATION TO REDUCE FASTENER LENGTH REQUIREMENTS).



**EXPANSION JOINT (FIELD FABRICATED) WITH SEPARATE FLASHING - ROOF TO ROOF**

**GENFLEX™ ACCEPTABLE SYSTEMS: SEAM2SEAM™ EPDM**

MAXIMUM WARRANTY: 20 Years

ISSUE / REVISION DATE:

06/01/2020

DETAIL NO.

**S2S-E-6**

GENFLEX: (800) 443-4272 www.genflex.com

NOT TO SCALE