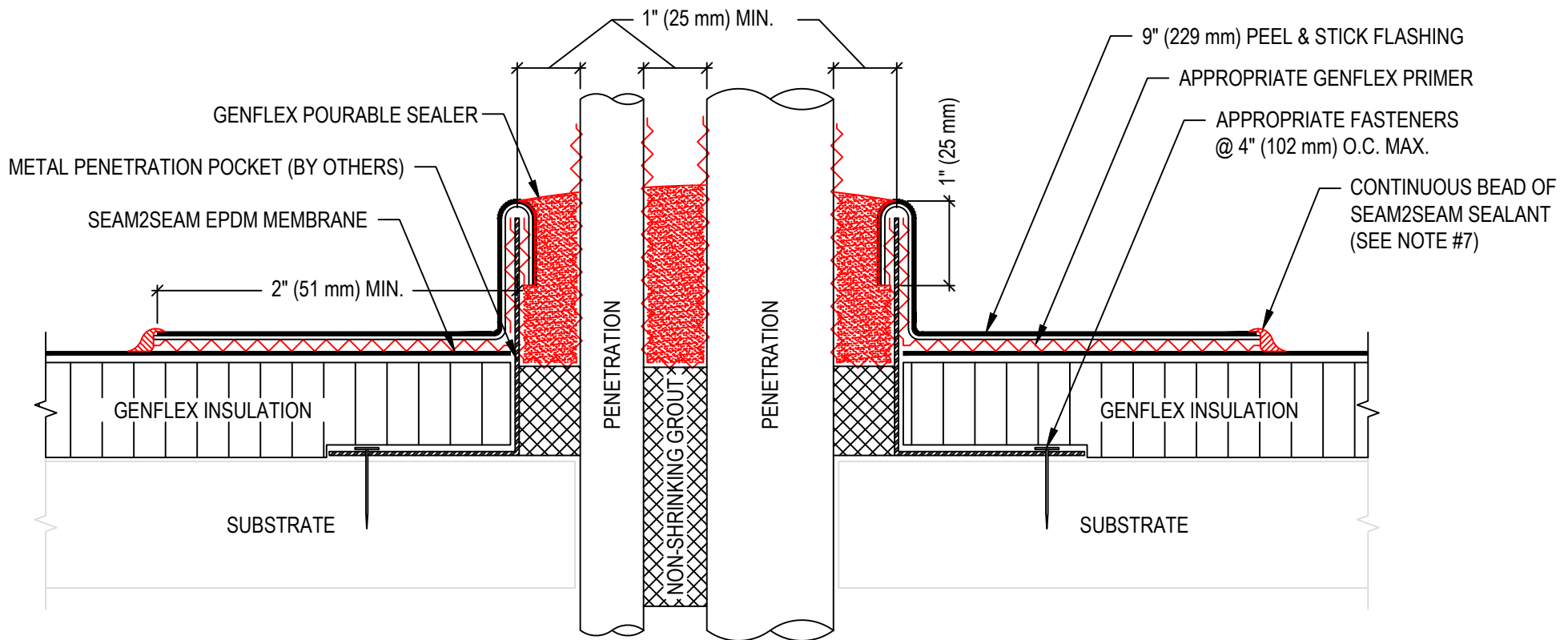


NOTE:

1. REFER TO GENFLEX WEBSITE FOR THE MOST CURRENT INFORMATION.
2. REMOVE ALL EXISTING FLASHING, LEAD, ETC. PIPE SURFACE MUST BE FREE OF ALL RUST, GREASE, INSULATION, ETC.
3. GENFLEX POURABLE SEALER MOUNDED TO SHED WATER TO MINIMUM DEPTH OF 2" (51 mm). REMAINDER OF POCKET MAY BE FILLED WITH NON-SHRINKING GROUT.
4. DO NOT USE OVER EXISTING PENETRATION POCKET.
5. WHEN OUTSIDE DIAMETER OF POCKET EXCEEDS 18" (457 mm), ADDITIONAL FIELD MEMBRANE SECUREMENT IS REQUIRED. REFER TO APPROPRIATE BASE TIE-IN DETAILS.
6. DO NOT USE WHEN SERVICE LINE TEMP. EXCEEDS 180 °F (82 °C). REFER TO S2S-P-4.
7. APPLY SEAM2SEAM SEALANT AROUND ENTIRE PERIMETER OF FLASHING. REFER TO S2S-LS-9 FOR PEEL & STICK EDGE TREATMENT.
8. PRIME PENETRATIONS AND INSIDE OF POCKET BEFORE INSTALLING POURABLE SEALER.



PENETRATION WITH METAL PENETRATION POCKET TO DECK

GENFLEX™

ACCEPTABLE SYSTEMS: **SEAM2SEAM™ EPDM**

GENFLEX: (800) 443-4272 www.genflex.com

MAXIMUM WARRANTY: 20 Years

ISSUE / REVISION DATE:

04/06/2020

NOT TO SCALE

DETAIL NO.

S2S-P-8