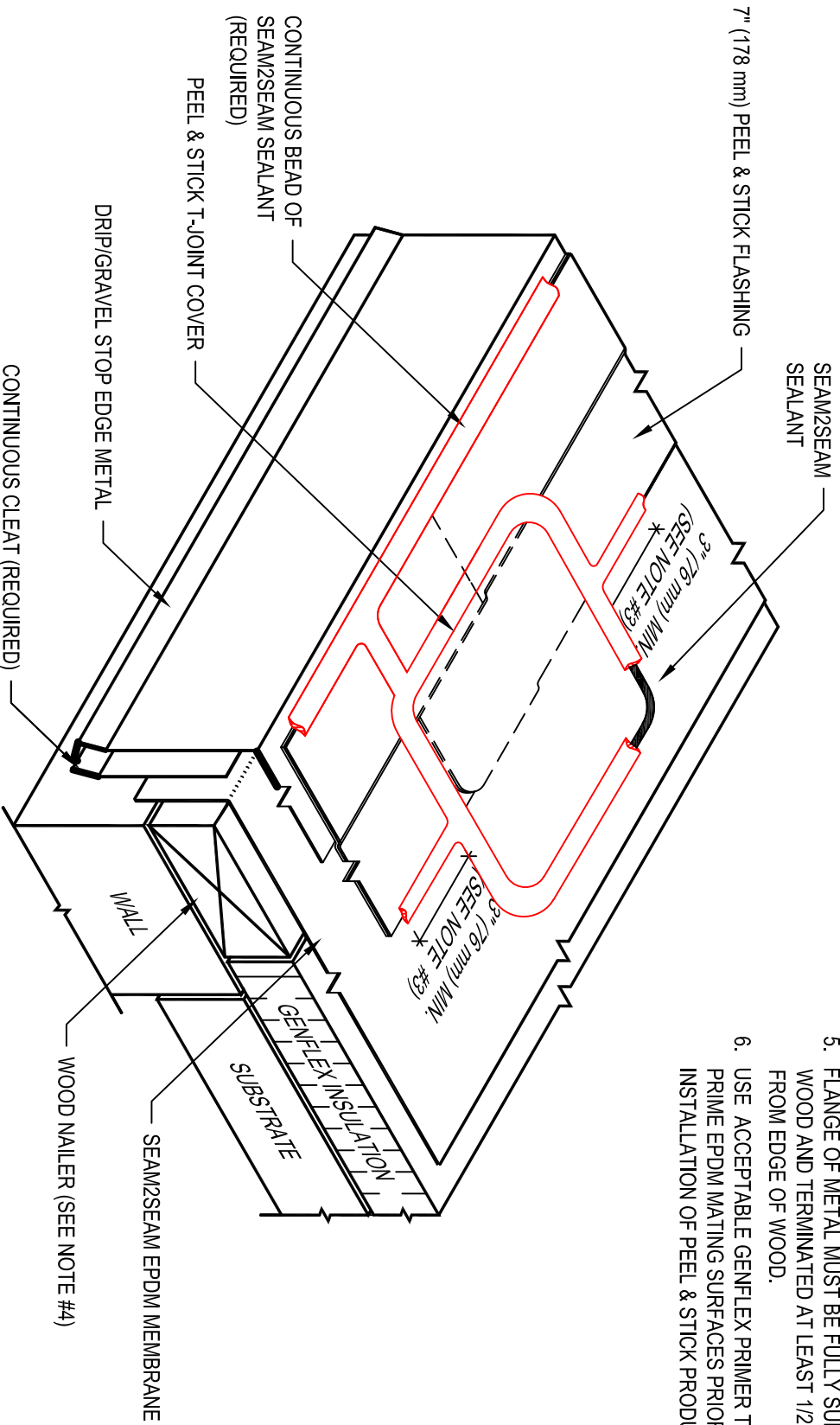


- NOTE:**
1. REFER TO GENFLEX WEBSITE FOR THE MOST CURRENT INFORMATION.
 2. APPLY SEAM2SEAM SEALANT ALONG ENTIRE PERIMETER OF T-JOINT COVER. REFER TO S2S-IS-9 FOR PEEL & STICK EDGE TREATMENT.

3. SEAM2SEAM SEALANT IS REQUIRED ALONG ENTIRE UPSLOPE EDGE OF PEEL & STICK FLASHING WHEN ROOF SLOPE IS 1" (25 mm) PER FOOT OR GREATER.
4. WOOD NAILER MUST BE INSTALLED TO MEET APPLICABLE BUILDING CODES OR 200 lb PER LINEAR FOOT MINIMUM IN ANY GIVEN DIRECTION.
5. FLANGE OF METAL MUST BE FULLY SUPPORTED BY WOOD AND TERMINATED AT LEAST 1/2" (13 mm) FROM EDGE OF WOOD.
6. USE ACCEPTABLE GENFLEX PRIMER TO CLEAN AND PRIME EPDM MATING SURFACES PRIOR TO INSTALLATION OF PEEL & STICK PRODUCTS.



**ROOF EDGE WITH PEEL & STICK FLASHING
END SPlice OVERLAP**

GENFLEX™

ACCEPTABLE SYSTEMS: SEAM2SEAM™ EPDM

GENFLEX: (800) 443-4272 www.genflex.com

MAXIMUM WARRANTY: 20 Years

ISSUE / REVISION
DATE:

06/12/2020

DETAIL NO.

S2S-RE-25

NOT TO SCALE