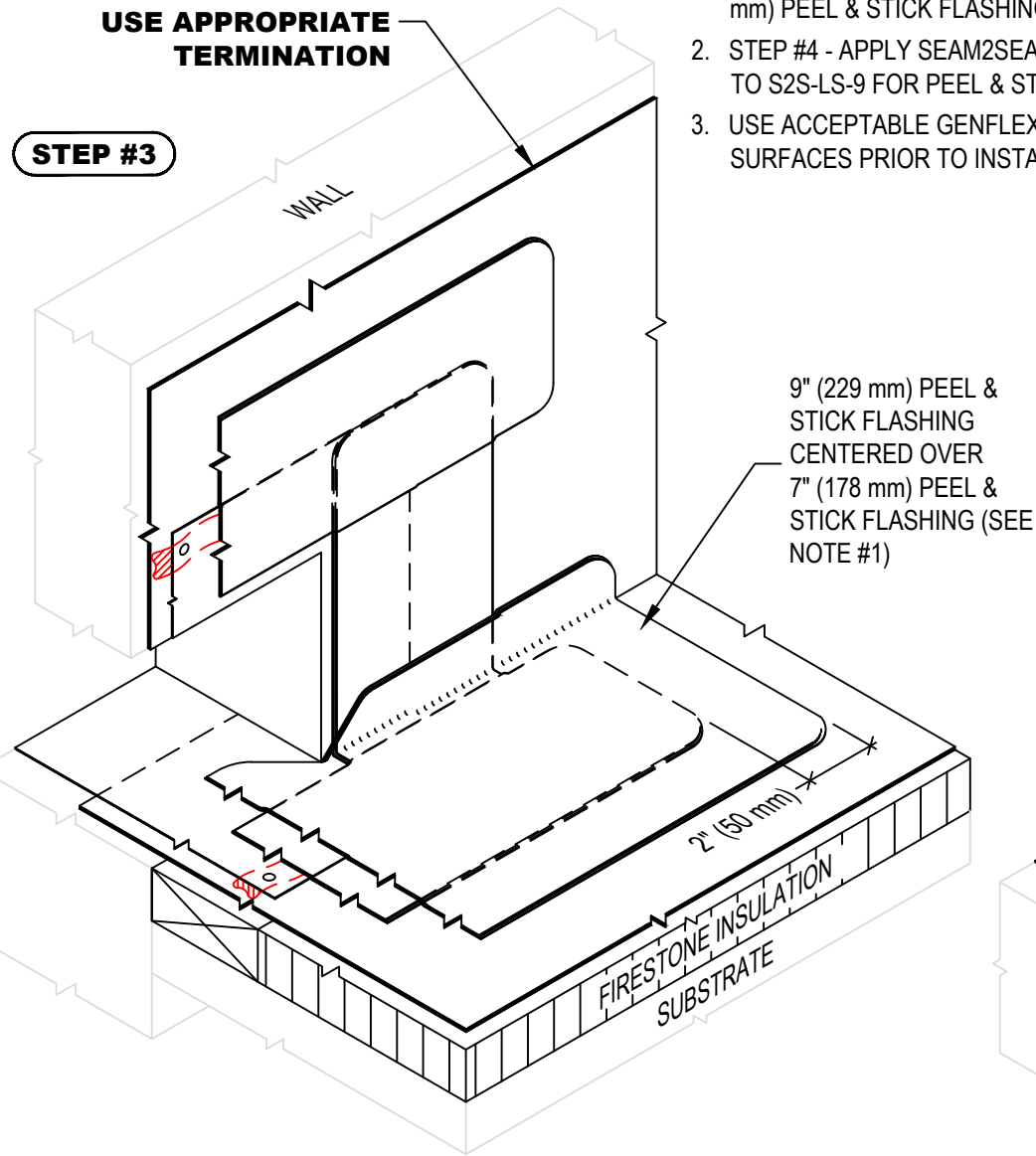


USE APPROPRIATE TERMINATION

STEP #3



9" (229 mm) PEEL & STICK FLASHING CENTERED OVER 7" (178 mm) PEEL & STICK FLASHING (SEE NOTE #1)

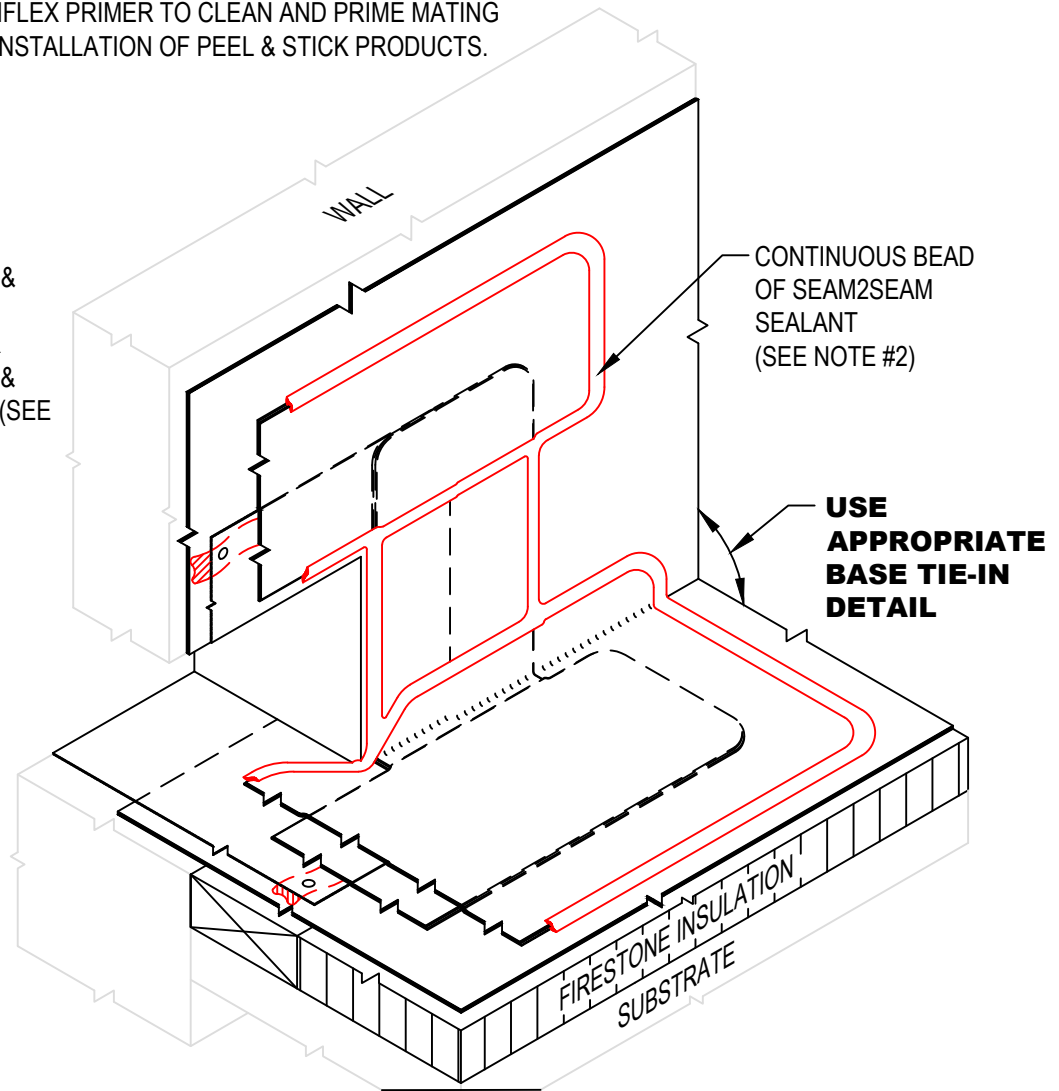
2" (50 mm)

FIRESTONE INSULATION
SUBSTRATE

NOTE:

1. STEP #3 - CENTER STRIP OF 9" (229 mm) PEEL & STICK FLASHING OVER 7" (178 mm) PEEL & STICK FLASHING AT BASE OF SCUPPER AS SHOWN.
2. STEP #4 - APPLY SEAM2SEAM SEALANT TO PERIMETER OF FLASHING. REFER TO S2S-LS-9 FOR PEEL & STICK EDGE TREATMENT.
3. USE ACCEPTABLE GENFLEX PRIMER TO CLEAN AND PRIME MATING SURFACES PRIOR TO INSTALLATION OF PEEL & STICK PRODUCTS.

STEP #4



CONTINUOUS BEAD OF SEAM2SEAM SEALANT (SEE NOTE #2)

USE APPROPRIATE BASE TIE-IN DETAIL



**THRU-WALL SCUPPER (WELDED SLEEVE)
INSTALLATION STEPS 3 & 4**

GENFLEX™

ACCEPTABLE SYSTEMS: SEAM2SEAM™ EPDM

MAXIMUM WARRANTY: 20 Years

ISSUE / REVISION
DATE:

04/06/2020

DETAIL NO.

S2S-S-1B

GENFLEX: (800) 443-4272 www.genflex.com

NOT TO SCALE