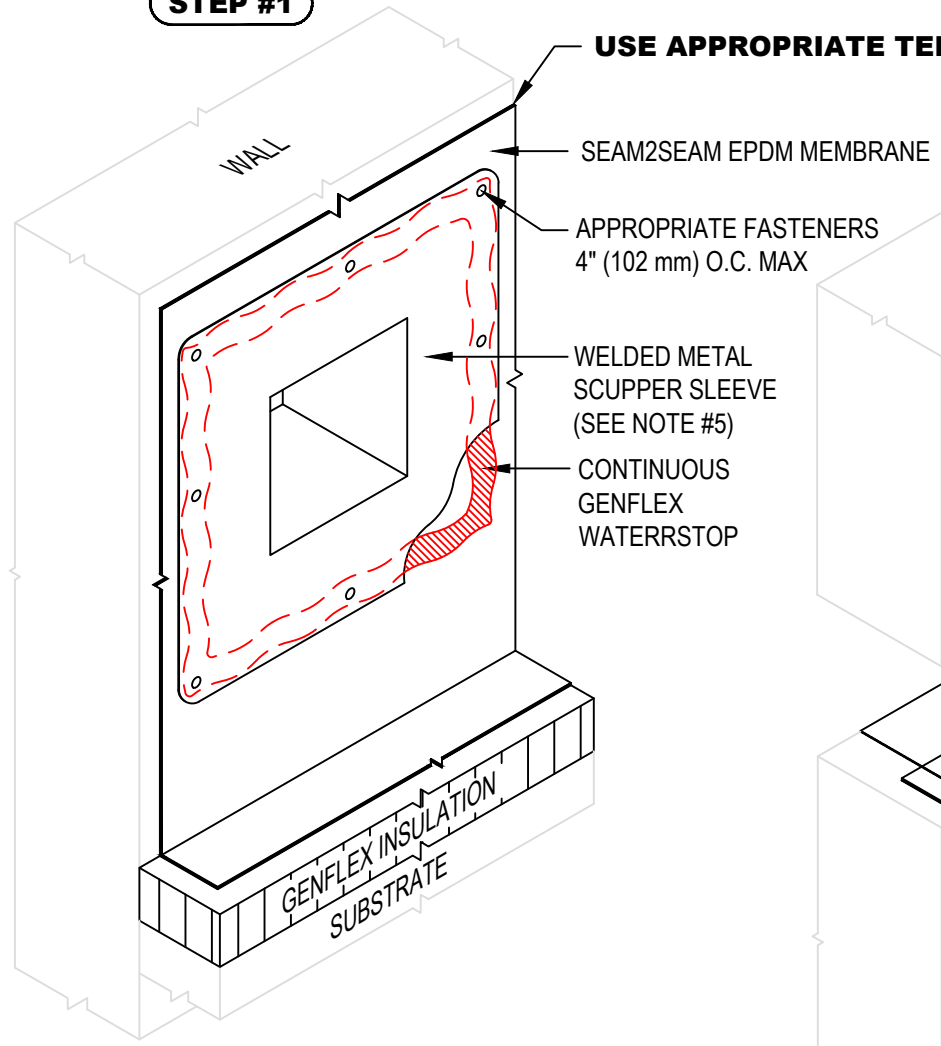
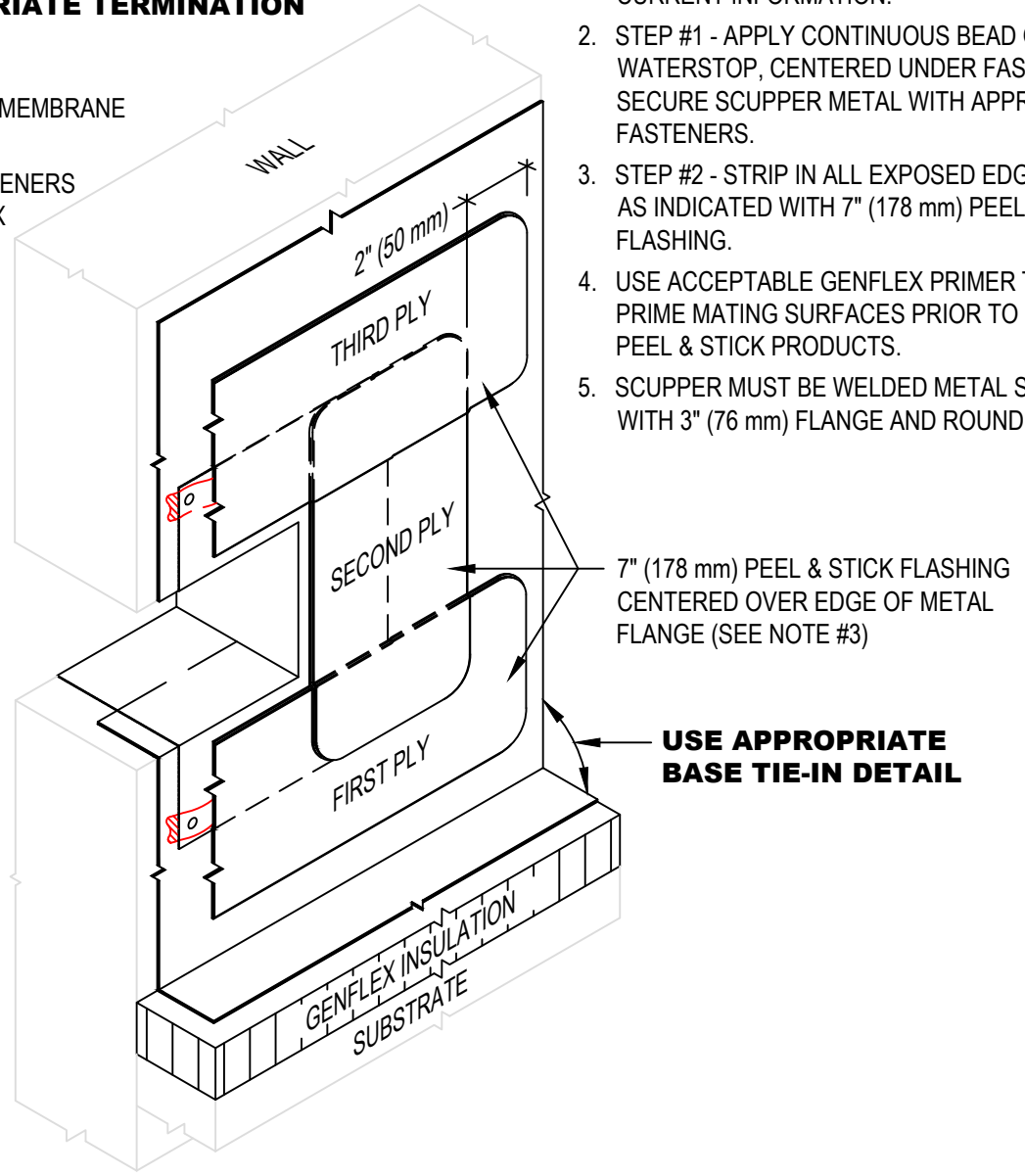


**STEP #1**



**STEP #2**



**NOTE:**

1. REFER TO GENFLEX WEBSITE FOR MOST CURRENT INFORMATION.
2. STEP #1 - APPLY CONTINUOUS BEAD OF GENFLEX WATERSTOP, CENTERED UNDER FASTENERS. SECURE SCUPPER METAL WITH APPROPRIATE FASTENERS.
3. STEP #2 - STRIP IN ALL EXPOSED EDGES OF SCUPPER AS INDICATED WITH 7" (178 mm) PEEL & STICK FLASHING.
4. USE ACCEPTABLE GENFLEX PRIMER TO CLEAN AND PRIME MATING SURFACES PRIOR TO INSTALLATION OF PEEL & STICK PRODUCTS.
5. SCUPPER MUST BE WELDED METAL SLEEVE WITH 3" (76 mm) FLANGE AND ROUNDED CORNERS..

7" (178 mm) PEEL & STICK FLASHING CENTERED OVER EDGE OF METAL FLANGE (SEE NOTE #3)

**USE APPROPRIATE BASE TIE-IN DETAIL**



**OVERFLOW THRU-WALL SCUPPER (WELDED SLEEVE) INSTALLATION STEPS 1 & 2**

**GENFLEX™**

ACCEPTABLE SYSTEMS: SEAM2SEAM™ EPDM

GENFLEX: (800) 443-4272 www.genflex.com

MAXIMUM WARRANTY: 20 Years

ISSUE / REVISION DATE:

04/06/2020

NOT TO SCALE

DETAIL NO.

**S2S-S-2A**