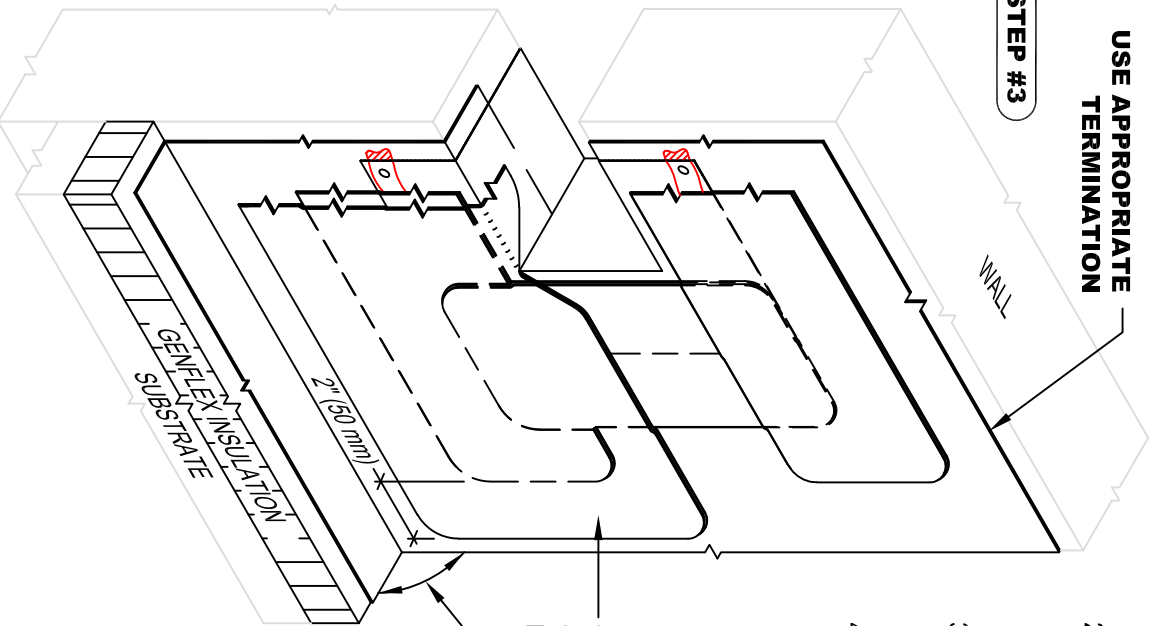


**USE APPROPRIATE TERMINATION**

**STEP #3**

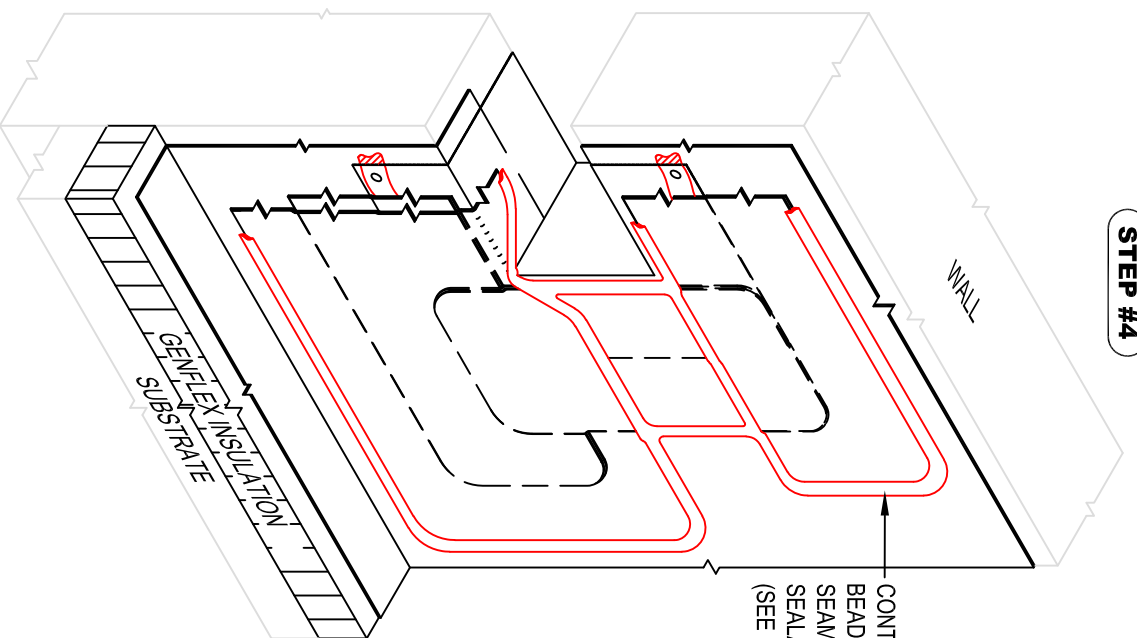


- NOTE:**
1. REFER TO GENFLEX WEBSITE FOR MOST CURRENT INFORMATION.
  2. STEP #3 - CENTER STRIP OF 9" (229 mm) PEEL & STICK FLASHING OVER 7" (178 mm) PEEL & STICK FLASHING AT BASE OF SCUPPER AS SHOWN.
  3. STEP #4 - APPLY SEAM2SEAM SEALANT TO PERIMETER OF FLASHING. REFER TO S2S-S-9 FOR SEAM2SEAM EDGE DETAIL.
  4. USE ACCEPTABLE GENFLEX PRIMER TO CLEAN AND PRIME EPDM MATING SURFACES PRIOR TO INSTALLATION OF PEEL&STICK PRODUCTS.

9" (229 mm) PEEL & STICK FLASHING CENTERED OVER 7" (178 mm) PEEL & STICK FLASHING (SEE NOTE #2)

**USE APPROPRIATE BASE TIE-IN DETAIL**

**STEP #4**



CONTINUOUS BEAD OF SEAM2SEAM SEALANT (SEE NOTE #3)



**OVERFLOW THRU-WALL SCUPPER (WELDED SLEEVE) INSTALLATION STEPS 3 & 4**

GENFLEX™

ACCEPTABLE SYSTEMS: SEAM2SEAM™ EPDM

GENFLEX: (800) 443-4272 www.genflex.com

MAXIMUM WARRANTY: 20 Years

ISSUE / REVISION DATE:

06/01/2020

NOT TO SCALE

DETAIL NO.

**S2S-S-2B**