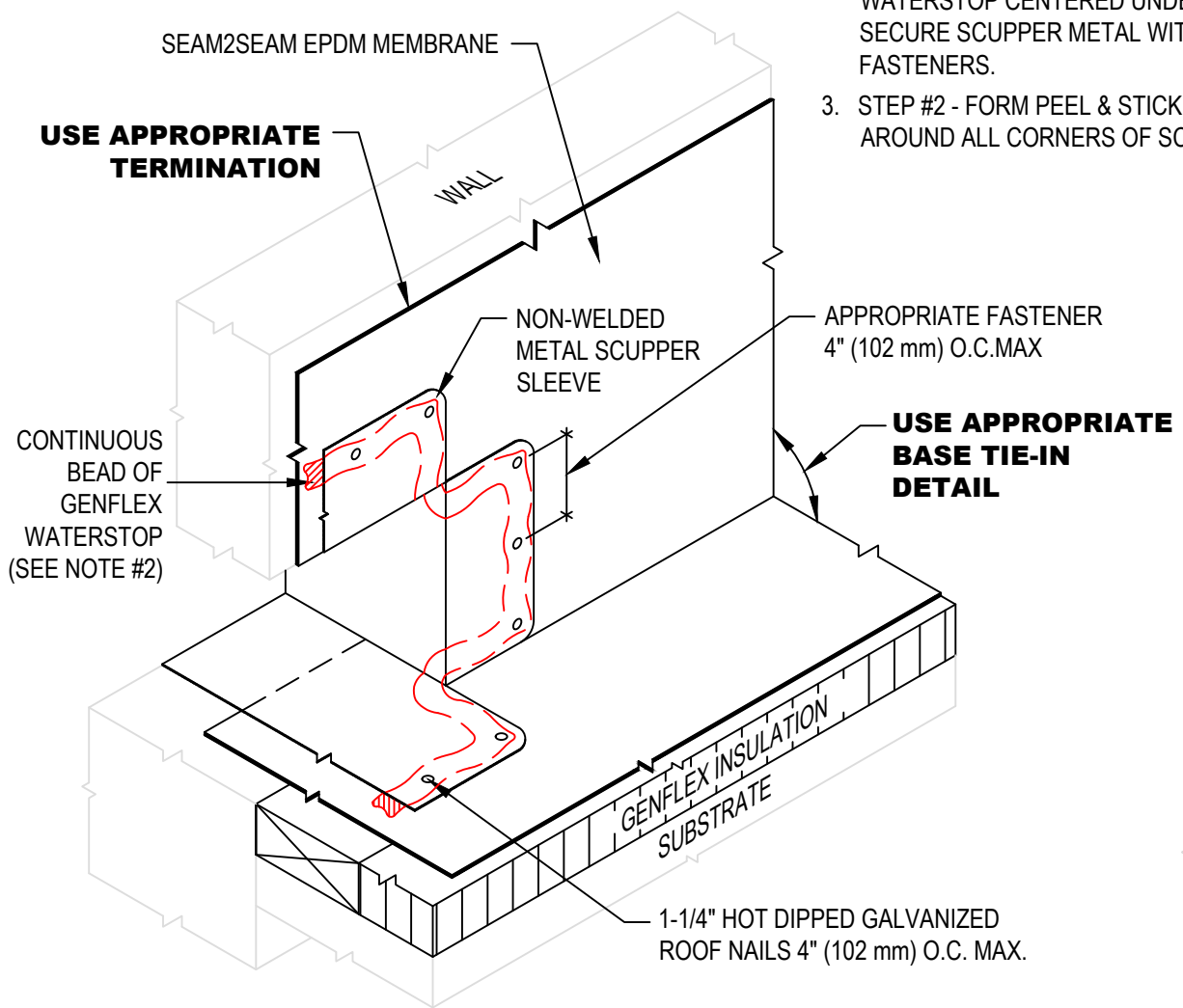


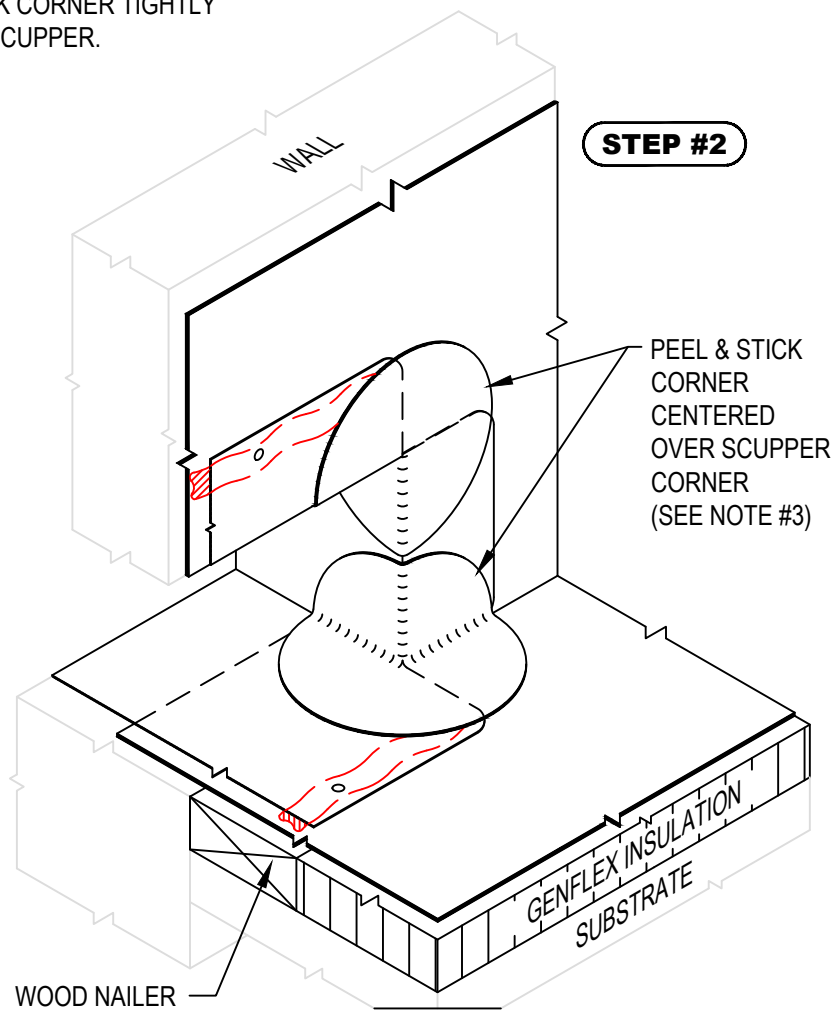
**NOTE:**

1. REFER TO GENFLEX WEBSITE FOR MOST CURRENT INFORMATION.
2. STEP #1 - APPLY CONTINUOUS BEAD OF GENFLEX WATERSTOP CENTERED UNDER FASTENERS. SECURE SCUPPER METAL WITH APPROPRIATE FASTENERS.
3. STEP #2 - FORM PEEL & STICK CORNER TIGHTLY AROUND ALL CORNERS OF SCUPPER.
4. USE ACCEPTABLE GENFLEX PRIMER TO CLEAN AND PRIME EPDM MATING SURFACES PRIOR TO INSTALLATION. OF PEEL & STICK PRODUCTS.
5. NON-WELDED SCUPPER SLEEVE WITH 3" (76 mm) FLANGE AND ROUNDED CORNERS.

**STEP #1**



**STEP #2**



**THRU-WALL SCUPPER (NON-WELDED SLEEVE)  
INSTALLATION STEPS 1 & 2**

**GENFLEX™**

ACCEPTABLE SYSTEMS: **SEAM2SEAM™ EPDM**

GENFLEX: (800) 443-4272 www.genflex.com

MAXIMUM WARRANTY: 20 Years	
ISSUE / REVISION DATE: 04/06/2020	DETAIL NO. <b>S2S-S-3A</b>
NOT TO SCALE	