

STEP #3

USE APPROPRIATE TERMINATION

WALL

2" (50 mm)

THIRD PLY

SECOND PLY

FIRST PLY

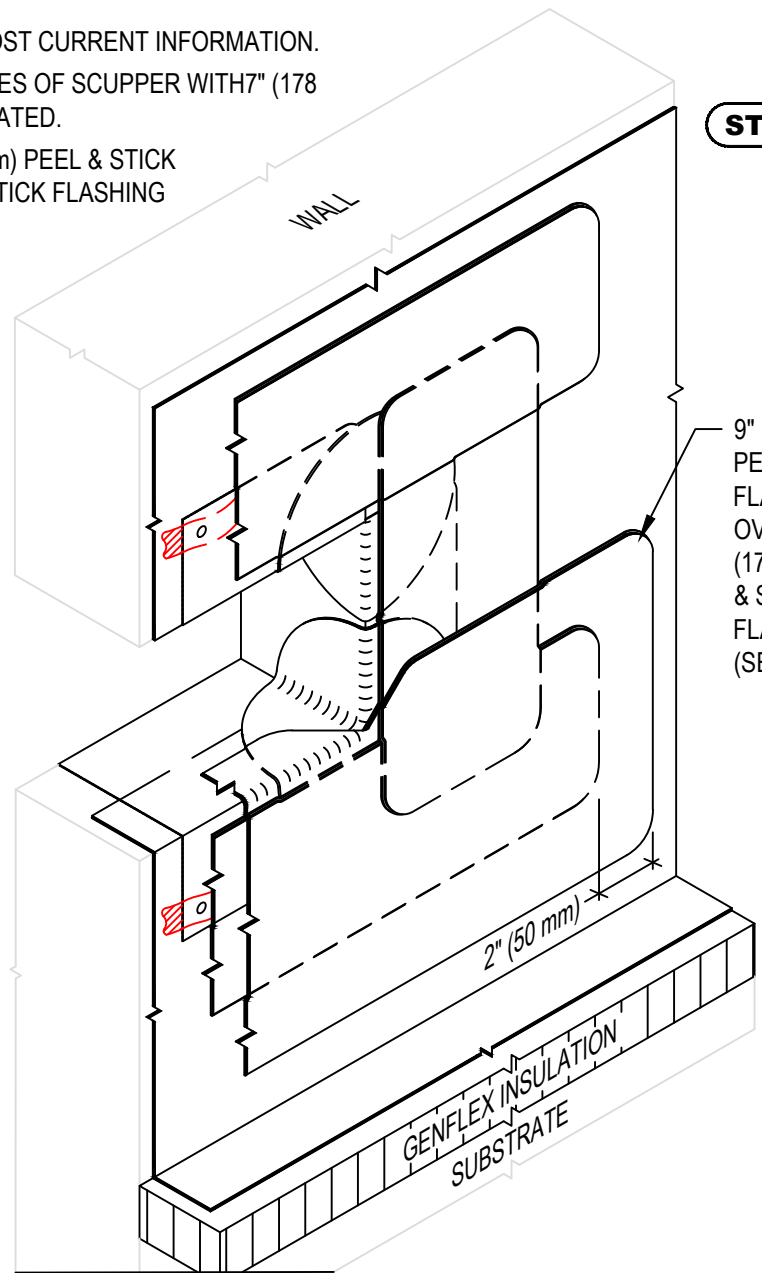
GENFLEX INSULATION
SUBSTRATE

NOTE:

1. REFER TO GENFLEX WEBSITE FOR MOST CURRENT INFORMATION.
2. STEP #3 - STRIP IN ALL EXPOSED EDGES OF SCUPPER WITH 7" (178 mm) PEEL & STICK FLASHING AS INDICATED.
3. STEP #4 - CENTER STRIP OF 9" (229 mm) PEEL & STICK FLASHING OVER 7" (178 mm) PEEL & STICK FLASHING AT BASE OF SCUPPER AS SHOWN.
4. USE ACCEPTABLE GENFLEX PRIMER TO CLEAN AND PRIME EPDM MATING SURFACES PRIOR TO INSTALLATION OF PEEL & STICK PRODUCTS.

7" (178 mm) PEEL & STICK FLASHING CENTERED OVER EDGE OF METAL FLANGE (SEE NOTE #2)

USE APPROPRIATE BASE TIE-IN DETAIL



STEP #4

WALL

2" (50 mm)

GENFLEX INSULATION
SUBSTRATE

9" (229 mm) PEEL & STICK FLASHING OVER 7" (178 mm) PEEL & STICK FLASHING (SEE NOTE #3)



**OVERFLOW THRU-WALL SCUPPER
(NON-WELDED SLEEVE) INSTALLATION STEPS 3 & 4**

GENFLEX™

ACCEPTABLE SYSTEMS: **SEAM2SEAM™ EPDM**

MAXIMUM WARRANTY: 20 Years

ISSUE / REVISION DATE:
04/06/2020

DETAIL NO.

S2S-S-4B

GENFLEX: (800) 443-4272 www.genflex.com

NOT TO SCALE