

TECHNICAL BULLETIN

June 2022

To: GenFlex Licensed Applicators
GenFlex Distributors
GenFlex Sales Representatives

Re: Seam2Seam™ EPDM SA Installations

To facilitate correct application of Seam2Seam EPDM SA membrane roofing systems, GenFlex will include the attached “Rooftop Tips” document with all new shipments of Seam2Seam EPDM membrane and Seam2Seam Sealant. This document supplements Seam2Seam EPDM installation videos available on YouTube, Seam2Seam installation details, GenFlex Technical Information Sheets and the Seam2Seam EPDM Application Guide, which has been updated and is available at www.genflex.com.

The Rooftop Tips addresses critical application steps to follow in order to install Seam2Seam EPDM SA successfully:

- It is vital to unroll and relax the membrane at least 30 minutes prior to installation. Up to 60 minutes may be required in overcast conditions or cold weather (below 40° F/4° C).
- Do not fold the membrane in half to remove the release liners. Move the relaxed sheet into position and remove both release liners simultaneously at a 45° angle.
- Properly prepare seam overlaps, remove the selvage edge release liner at a 45° angle, and mate the seams as instructed in the Seam2Seam Application Guide. Immediately hand-roll the seams using a 1½" to 2" wide silicone roller, first at a right angle toward the outer seam edge and then along the length of the seam, making sure there is sufficient contact between membrane layers.
- Apply Seam2Seam Sealant to seam edges by the end of each working day.
 - ✓ Cut the provided dispensing nozzle to create a 1/4" to 5/16" opening and apply Seam2Seam Sealant over both sides of the primed seam in a 3/8" x 1/4" wide bead.
 - ✓ Keep the applicator tip centered over the seam edge. **The sealant bead must contact the upper and lower parts of the step-off.**
 - ✓ Do not tool, thin, or spread Seam2Seam Sealant.
 - ✓ A battery gun is required to ensure consistent, even application.

When inclement weather is expected, apply GenFlex primer to all seam edges before leaving the project. On the next working day, clean, prime, and seal all seams as described above.

For additional information or contact GenFlex Technical Services at (800) 443-4272.

Sincerely,



Michelle Benatti McNerlin
National Technical Manager, EPDM Systems

Encl: Rooftop Tips (English and Spanish)

Seam2Seam™ EPDM Application – Rooftop Tips

Below are some helpful tips to ensure proper application of Seam2Seam EPDM. Refer to Seam2Seam EPDM Application Guide and Detail Drawings on www.genflex.com for complete installation instructions.

TIP ONE: The membrane must be allowed to relax prior to installation. Unroll Seam2Seam EPDM topside up (release liner down) and let it relax in direct sunlight as long as possible before moving into final position. **THE MEMBRANE MUST RELAX AT LEAST 30 MINUTES, BUT UP TO 60 MINUTES MAY BE NEEDED IN OVERCAST CONDITIONS OR IN COLD WEATHER (BELOW 40 F°/4 C°).**

TIP TWO: Reposition the membrane to its final position, ensuring proper alignment with pre-marked lap splice areas. **DO NOT FOLD THE SHEET IN HALF TO REMOVE THE RELEASE LINER.** At least two people are needed to remove both sides simultaneously at a 45° angle. Broom and roll the membrane to initiate adhesion (see Application Guide for brooming and rolling requirements and restrictions).



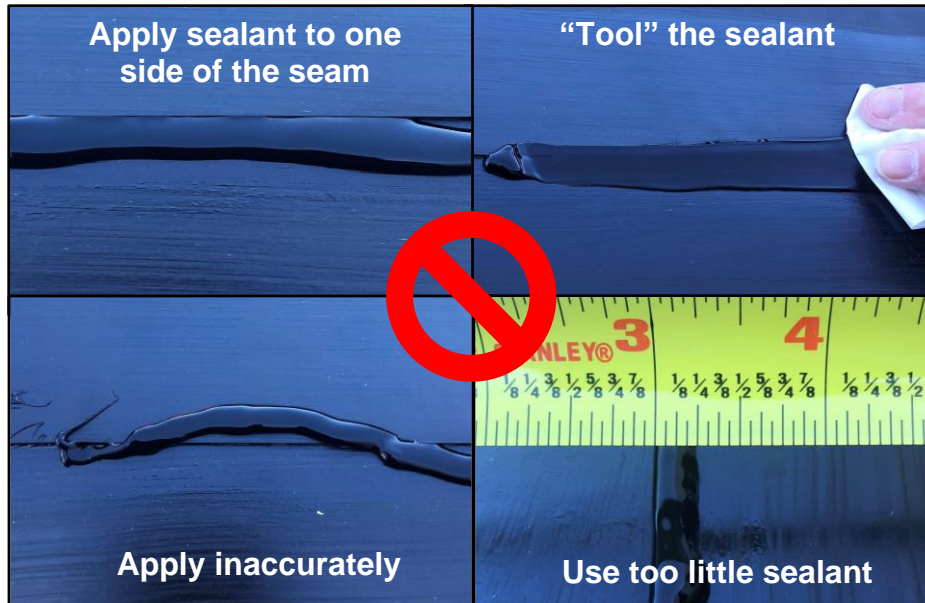
TIP THREE: Remove selvage edge release liner at a 45° angle, prime lap areas, and mate the seams (see Application Guide for full priming instructions). *Immediately* hand-roll the seams. Use a 1½" to 2" wide silicone roller to roll the entire seam, first at a right angle toward the outer seam edge and then along the length of the seam, making sure there is sufficient contact between membrane layers.

TIP FOUR: Properly apply Seam2Seam Sealant. **SEAM2SEAM SEALANT IS NOT A LAP SEALANT. IT IS AN EDGE ADHESIVE THAT IS INTEGRAL TO THE SEAM AND IT MUST BE APPLIED CORRECTLY. SEAM2SEAM SEALANT MUST BE APPLIED BY THE END OF EACH WORKING DAY.**

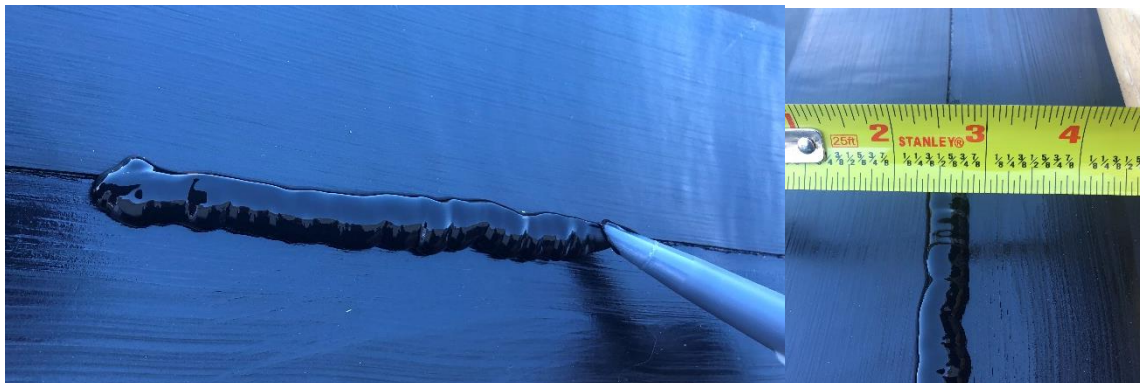


Seam2Seam™ EPDM Application – Rooftop Tips

DO NOT:



DO: Cut the provided dispensing nozzle to create a 1/4" to 5/16" opening and apply Seam2Seam Sealant over both sides of the primed seam in a 3/8" x 1/4" wide bead. Use a battery powered caulking gun to ensure consistent and even application.



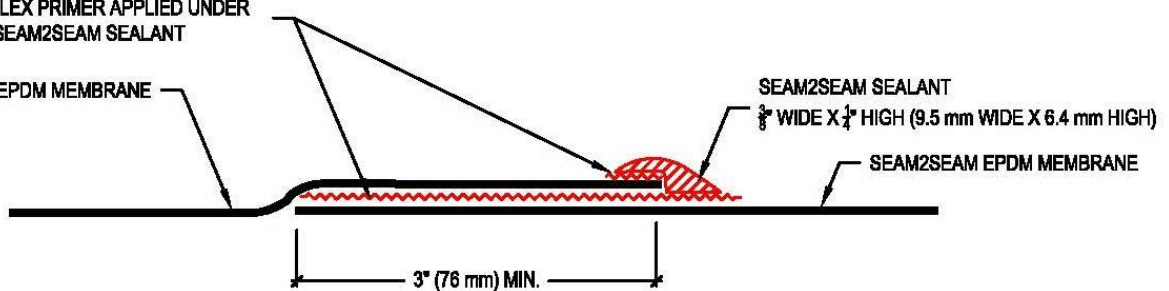
ACCEPTABLE GENFLEX PRIMER APPLIED UNDER SEAM AND UNDER SEAM2SEAM SEALANT

SEAM2SEAM EPDM MEMBRANE

SEAM2SEAM SEALANT

3/8" WIDE X 1/4" HIGH (9.5 mm WIDE X 6.4 mm HIGH)

SEAM2SEAM EPDM MEMBRANE



Refer to Aug 2021 Technical Advisory "Correct Application of Seam2Seam Sealant" on our website for details.

Questions? Call GenFlex Technical Services at (800) 443-4272.



Aplicación de EPDM Seam2Seam™ – Rooftop Tips

A continuación, se incluyen algunos consejos útiles para garantizar la aplicación adecuada de Seam2Seam EPDM. Consulte la Guía de aplicación de EPDM Seam2Seam y encuentre los dibujos detallados en www.genflex.com para obtener instrucciones de instalación completas.

CONSEJO UNO: Se debe permitir que la membrana se relaje antes de la instalación. Desenrolle la membrana Seam2Seam EPDM con la parte superior hacia arriba (dejando la película de protección hacia abajo) y déjela reposar a luz de sol directa el mayor tiempo posible antes de pasarla a su posición final. **LA MEMBRANA DEBE RELAJARSE AL MENOS 30 MINUTOS, PERO PUEDEN SER NECESARIOS HASTA 60 MINUTOS EN CONDICIONES NUBLADAS O EN CLIMA FRÍO (POR DEBAJO DE 40 F°/4 C°).**

CONSEJO DOS: Vuelva a colocar la membrana en su posición final, asegurándose de que esté correctamente alineada con las áreas de traslape previamente marcadas. **NO PLIEGUE LA MEMBRANA POR LA MITAD PARA QUITAR LA PELÍCULA DE PROTECCIÓN.** Se necesitan al menos dos personas para quitar ambos lados simultáneamente en un ángulo de 45°. Cepille y presione con rodillo la membrana para iniciar la adhesión (consulte la Guía de aplicación para conocer los requisitos y restricciones del uso de cepillos y rodillos).



CONSEJO TRES: Retire el borde desprendible del orillo en un ángulo de 45°, aplique imprimante a las áreas traslapadas y empareje las uniones (consulte la Guía de aplicación para obtener instrucciones completas sobre el proceso de imprimación). Inmediatamente aplique presión con un rodillo de mano en las costuras. Use un rodillo de silicona de 1½" a 2" de ancho para unir toda la costura, primero en ángulo recto hacia el borde exterior de la costura y luego a lo largo de la costura, asegurándose de que haya suficiente contacto entre las capas de la membrana.

CONSEJO CUATRO: Aplique correctamente el Sellador Seam2Seam. **EL SELLADOR SEAM2SEAM NO ES UN SELLADOR UNIONES. ES UN ADHESIVO PARA BORDES QUE INTEGRA LAS JUNTAS Y DEBE SER APLICADO CORRECTAMENTE. EL SELLADOR SEAM2SEAM DEBE APLICARSE AL FINAL DE CADA DÍA DE TRABAJO.**

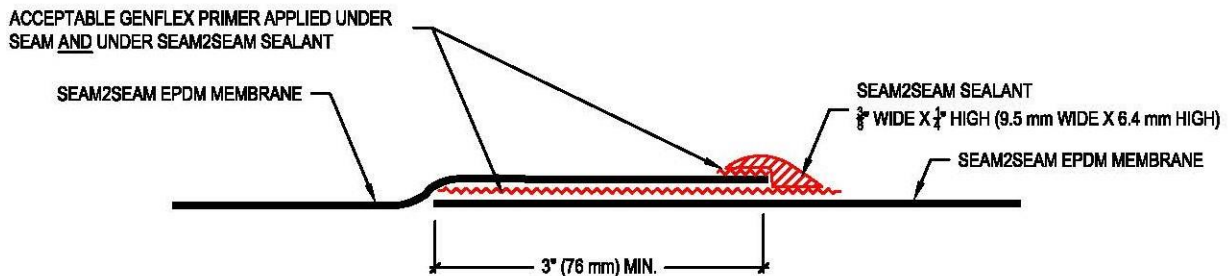
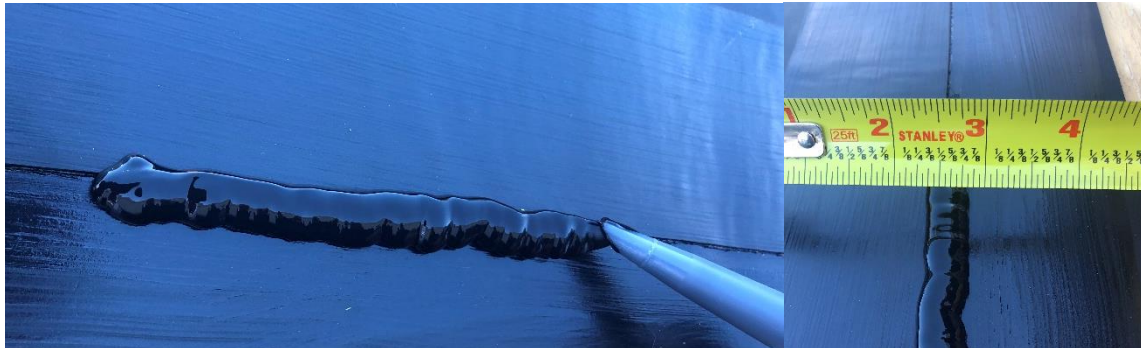


Aplicación de EPDM Seam2Seam™ – Rooftop Tips

NO:



Sí: Corte la boquilla dispensadora provista para crear una abertura de 1/4" a 5/16" y aplique Seam2Seam Sealant sobre ambos lados de la unión imprimada en un cordón de 3/8" x 1/4" de ancho. Use una pistola de calafateo a baterías para garantizar una aplicación constante y uniforme.



Consulte el Aviso técnico de agosto de 2021 "Aplicación correcta del sellador Seam2Seam " en nuestro sitio web para obtener más detalles.

¿Preguntas? Llame al departamento de Servicios Técnicos de GenFlex al (800) 443-4272.

