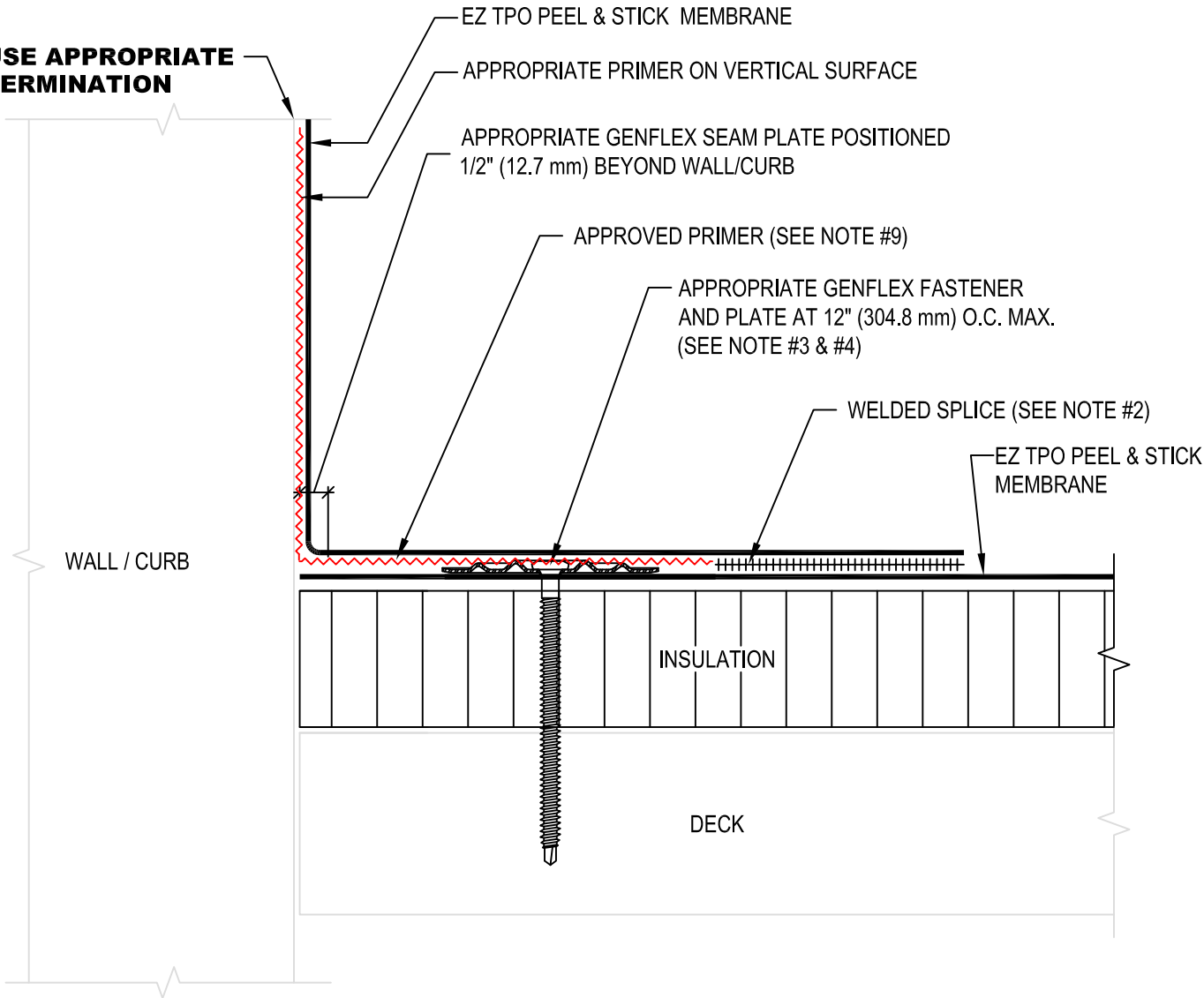


USE APPROPRIATE TERMINATION



NOTE:

1. REFER TO THE GENFLEX™ WEBSITE FOR MOST CURRENT INFORMATION.
2. REFER TO DETAIL EZT-PS-LS-01 OR EZT-PS-LS-02 FOR WELD WIDTH.
3. MAXIMUM 10" (254 mm) LONG FASTENERS. (NOTE: WOOD BLOCKING MAY BE SUBSTITUTED FOR INSULATION TO REDUCE FASTENER LENGTH REQUIREMENT).
4. IN CASE OF OBSTRUCTION REFER TO DETAIL EZT-PS-BT-05.
5. REFER TO EZT-PS-BT-16 & EZT-PS-BT-17 FOR MEMBRANE SECUREMENT AT CORNERS.
6. WHEN REINFORCEMENT OF TPO MEMBRANE IS EXPOSED, REFER TO EZT-PS-LS-04 FOR CUT EDGE SEALANT APPLICATION.
7. REFER TO GENFLEX TIS SHEETS AND APPLICATION GUIDES FOR LIST OF COMPATIBLE SUBSTRATES WITH EZ TPO PEEL & STICK MEMBRANE.
8. STANDARD EZ TPO MEMBRANE WITH APPROPRIATE MEMBRANE ADHESIVE OR EZ TPO PEEL & STICK MEMBRANE MAY BE USED AS WALL FLASHING.
9. APPROVED PRIMERS INCLUDE GENFLEX CLEAR PRIMER AND GENFLEX CLEAR LVOC PRIMER.
10. REFER TO EZT-PS-BT-08 & EZT-PS-BT-09 FOR MEMBRANE SECUREMENT AT CORNERS.



BASE TIE-IN WITH GENFAST™ FASTENER AND PLATE FASTENED TO DECK

ACCEPTABLE SYSTEMS: EZ TPO PEEL & STICK™

ACCEPTABLE SYSTEMS: EZ TPO PEEL & STICK™ SELF ADHERED

MAXIMUM WARRANTY: 20 Years

ISSUE / REVISION DATE:

05/01/2023

DETAIL NO.

EZT-PS-BT-01

(800) 443-4272 www.genflex.com

NOT TO SCALE