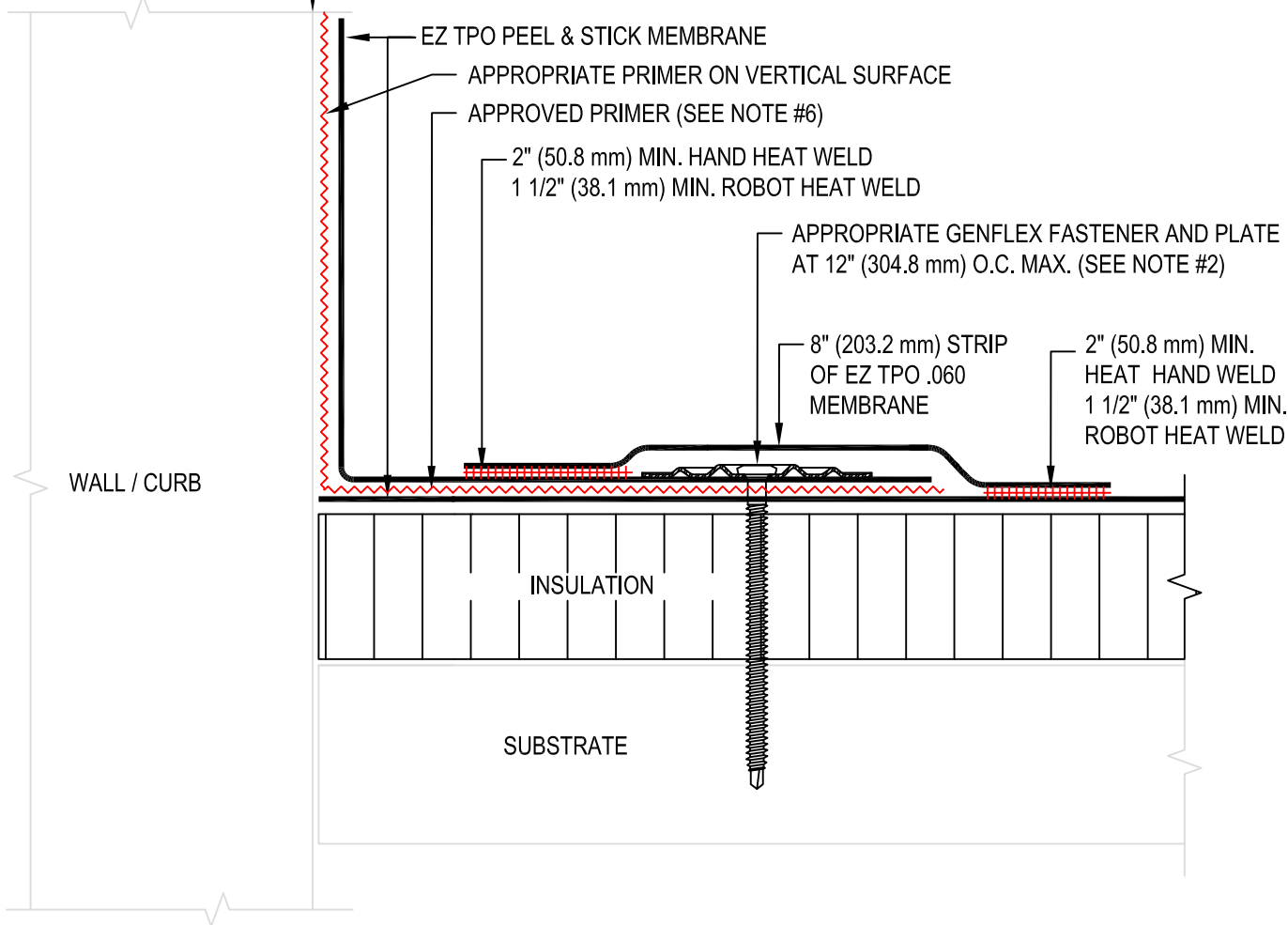


USE APPROPRIATE TERMINATION



NOTE:

1. REFER TO THE GENFLEX™ WEBSITE FOR MOST CURRENT INFORMATION.
2. REFER TO DETAIL EZT-PS-LS-01 OR EZT-PS-LS-02 FOR WELD WIDTH.
3. MAXIMUM 10" (254 mm) LONG FASTENERS. (NOTE: WOOD BLOCKING MAY BE SUBSTITUTED FOR INSULATION TO REDUCE FASTENER LENGTH REQUIREMENT).
4. FASTENER AND PLATE TO BE INSTALLED THROUGH BOTH LAYERS OF EZ TPO PEEL & STICK MEMBRANE.
5. STANDARD EZ TPO MEMBRANE WITH APPROPRIATE MEMBRANE ADHESIVE OR EZ TPO PEEL & STICK MEMBRANE MAY BE USED AS WALL FLASHING.
6. APPROVED PRIMERS INCLUDE GENFLEX CLEAR PRIMER AND GENFLEX CLEAR LVOC PRIMER.
7. WHEN REINFORCEMENT OF TPO MEMBRANE IS EXPOSED, REFER TO EZT-PS-LS-04 FOR CUT EDGE SEALANT APPLICATION.
8. REFER TO GENFLEX TIS SHEETS AND APPLICATION GUIDES FOR LIST OF COMPATIBLE SUBSTRATES WITH EZ TPO PEEL & STICK MEMBRANE.
9. REFER TO EZT-PS-BT-08 & EZT-PS-BT-09 FOR MEMBRANE SECUREMENT AT CORNERS.



BASE TIE-IN WITH GENFAST™ FASTENER AND PLATE FASTENED TO DECK - SEPARATE WALL FLASHING

ACCEPTABLE SYSTEMS: EZ TPO PEEL & STICK™

ACCEPTABLE SYSTEMS: EZ TPO PEEL & STICK™ SELF ADHERED

MAXIMUM WARRANTY: 20 Years

ISSUE / REVISION DATE:

05/01/2023

DETAIL NO.

EZT-PS-BT-03

NOT TO SCALE