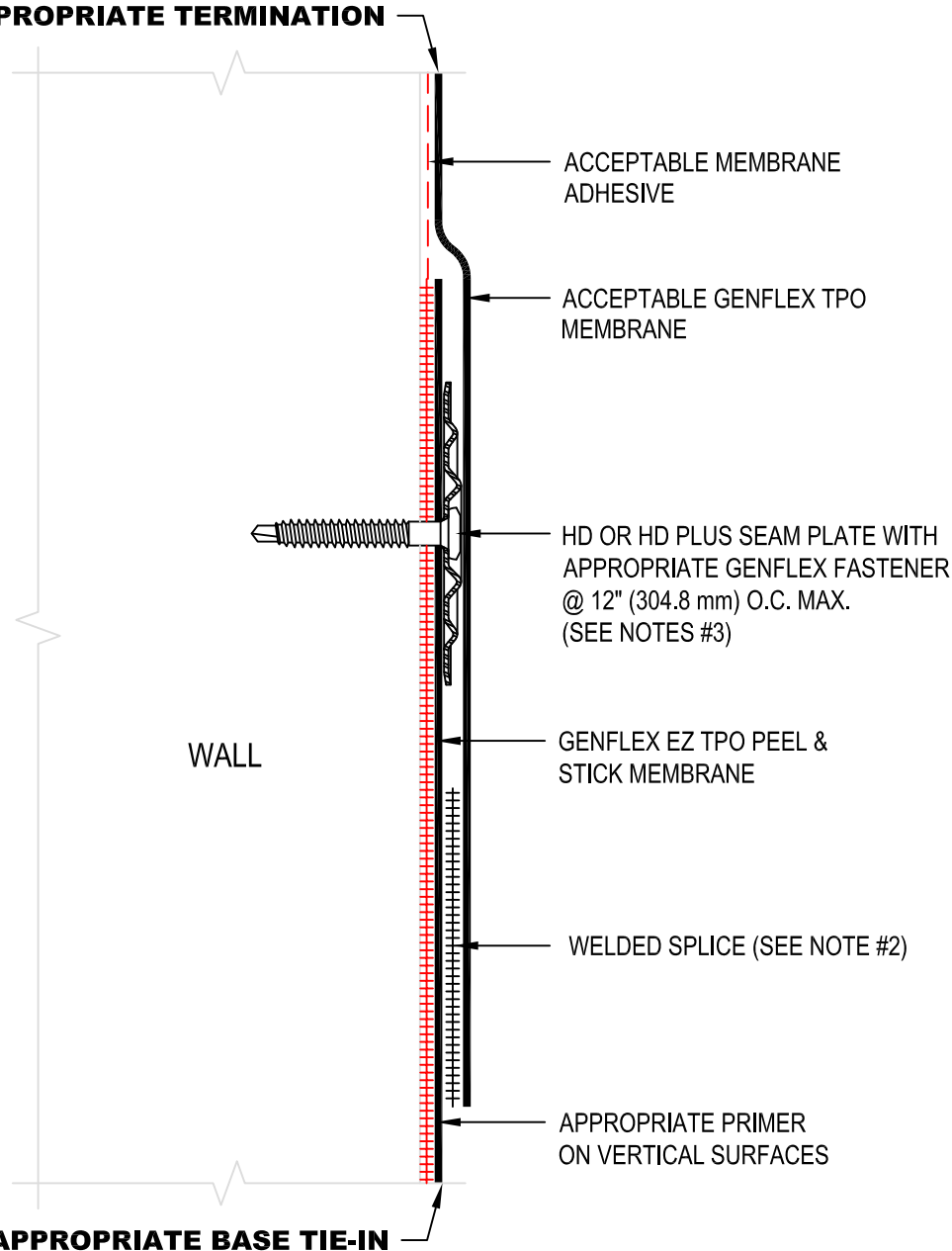


USE APPROPRIATE TERMINATION



NOTE:

1. REFER TO THE GENFLEX™ WEBSITE FOR MOST CURRENT INFORMATION.
2. REFER TO DETAIL EZT-PS-LS-01 FOR WELD WIDTH.
3. GENFLEX BATTEN STRIP MAY BE USED IN LIEU OF SEAM PLATES. POLYMER OR METAL BATTEN STRIP ACCEPTABLE FOR WOOD OR METAL SUBSTRATE. METAL BATTEN MUST BE USED WITH MASONRY SUBSTRATE.
4. IF INTERMEDIATE ATTACHMENT IS REQUIRED, COMPLETE AS FOLLOWS:
 - UP TO 3' (0.91 m) WALL HEIGHT- NONE REQUIRED
 - 3' (0.91 m) - 6' (2 m) WALL HEIGHT - ONE ATTACHMENT AT 1/2 THE WALL HEIGHT
 - ABOVE 6' (1.83 m) - ONE ATTACHMENT EVERY 3' (0.91 m)
5. THERE ARE SOME CONDITIONS WHICH DO NOT REQUIRE INTERMEDIATE ATTACHMENT. REFER TO GENFLEX APPLICATION SPECIFICATIONS FOR ADDITIONAL INFORMATION.
6. WHEN REINFORCEMENT OF TPO MEMBRANE IS EXPOSED, REFER TO EZT-PS-04 FOR CUT EDGE SEALANT APPLICATION.
7. 5" (127 mm) WIDE WELD IS ACCEPTABLE AS AN ALTERNATE TO STANDARD 1 1/2" (38.1 mm) WELD FOR WALL FLASHING.
8. APPROVED PRIMER REQUIRED ON ALL VERTICAL SURFACES WHEN EZ TPO PEEL & STICK MEMBRANE IS USED FOR FLASHING.
9. REFER TO TPO APPLICATION GUIDE FOR ACCEPTABLE FLASHING SUBSTRATES.

USE APPROPRIATE BASE TIE-IN



INTERMEDIATE WALL FLASHING ATTACHMENT WITH WELDED SPLICE

MAXIMUM WARRANTY: 20 Years

ACCEPTABLE SYSTEMS: EZ TPO PEEL & STICK™

ACCEPTABLE SYSTEMS: EZ TPO PEEL & STICK™ SELF ADHERED

ISSUE / REVISION DATE:
05/01/2023

DETAIL NO.
EZT-PS-T-08

(800) 443-4272 www.genflex.com

NOT TO SCALE