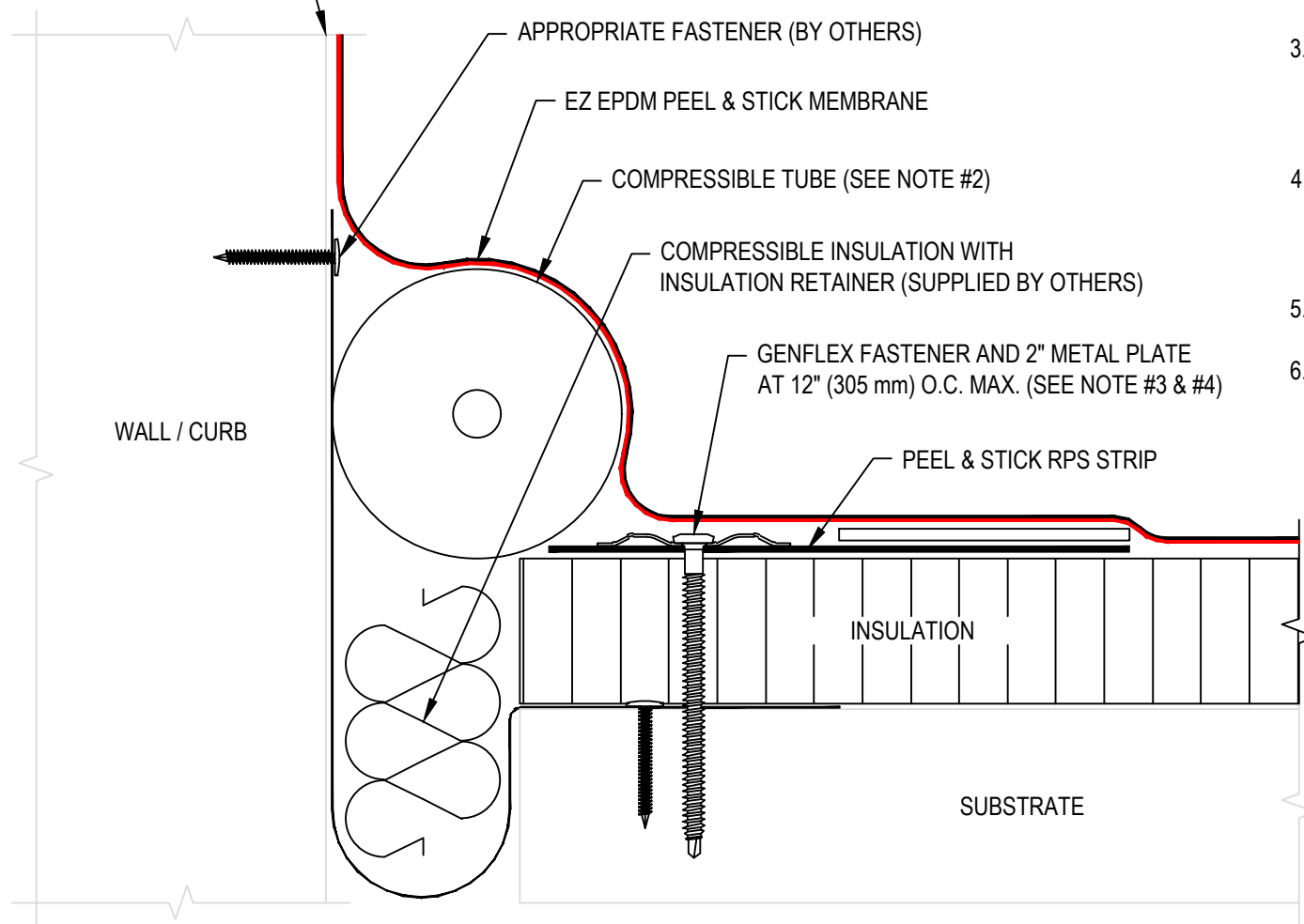


**USE APPROPRIATE
TERMINATION**



NOTE:

1. REFER TO GENFLEX™ WEBSITE FOR MOST CURRENT INFORMATION.
2. COMPRESSIBLE TUBE (SUPPLIED BY OTHERS) DIAMETER MUST EXCEED THE DECK OPENING BY 50% MIN. OR DESIGNED MOVEMENT (WHICH EVER IS GREATER). LEAVE RELEASE LINER ON P&S MEMBRANE AT COMPRESSIBLE TUBE AREA.
3. BAR ANCHOR MAY BE USED IN LIEU OF 2" METAL PLATES. REFER TO "BT" DETAILS FOR SPECIFIC BASE TIE-IN INFORMATION, REQUIREMENTS AND OPTIONS.
4. MAXIMUM 10" (254 mm) LONG FASTENERS, (NOTE: WOOD BLOCKING MAY BE SUBSTITUTED FOR INSULATION TO REDUCE FASTENER LENGTH REQUIREMENTS).
5. REFER TO EZE-PS-LS-06 FOR ADDITIONAL LAP SPLICE REQUIREMENTS.
6. APPROVED PRIMER ON ALL VERTICAL SURFACES.



**EXPANSION JOINT (FIELD FABRICATED) WITH
PEEL & STICK RPS ROOF TO WALL**

ACCEPTABLE SYSTEMS: EZ EPDM PEEL & STICK™ SELF ADHERED

(800) 443-4272 www.genflex.com

MAXIMUM WARRANTY: 20 Years

ISSUE / REVISION
DATE:

07/28/2023

NOT TO SCALE

DETAIL NO.

EZE-PS-E-01