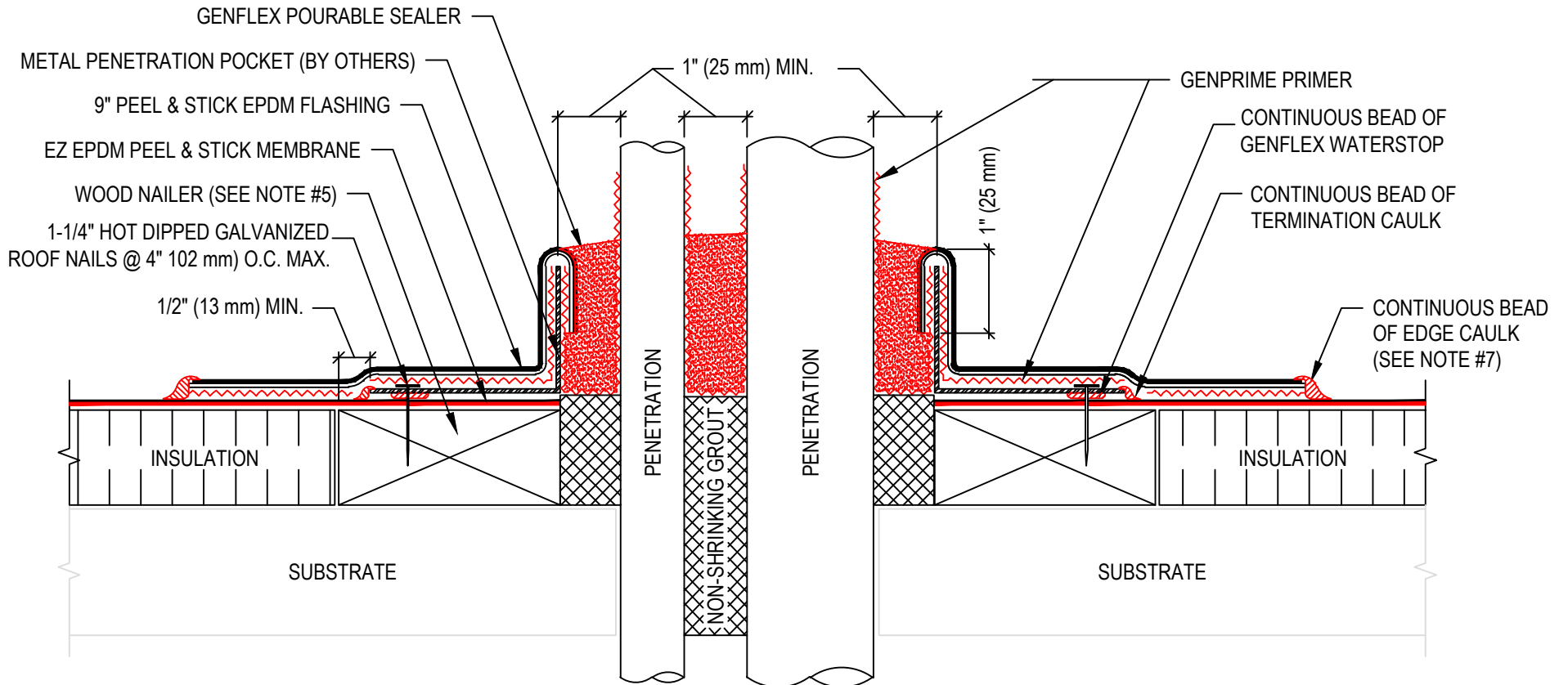


**NOTE:**

1. REFER TO GENFLEX™ WEBSITE FOR THE MOST CURRENT INFORMATION.
2. REMOVE ALL EXISTING FLASHING, LEAD, ETC. PIPE SURFACE MUST BE FREE OF ALL RUST, GREASE, INSULATION, ETC.
3. GENFLEX POURABLE SEALER MOUNDED TO SHED WATER. (MINIMUM DEPTH OF 2" (51 mm), REMAINDER OF POCKET MAY BE FILLED WITH NON-SHRINKING GROUT).
4. DO NOT USE OVER EXISTING PENETRATION POCKETS
5. WOOD NAILER MUST BE INSTALLED TO MEET APPLICABLE BUILDING CODES.
6. DO NOT USE WHEN SERVICE LINE TEMP. EXCEEDS 180 °F (82 °C). REFER TO EZE-PS-P-04.
7. APPLY EDGE CAULK AROUND ENTIRE PERIMETER OF FLASHING. REFER TO EZE-PS-LS-09 FOR SEAM EDGE TREATMENT.
8. GENPRIME PRIMER REQUIRED ON PENETRATIONS AND MEMBRANE INSIDE OF PENETRATION POCKET.



**PENETRATION WITH METAL PENETRATION POCKET TO NAILER**

ACCEPTABLE SYSTEMS: EZ EPDM PEEL & STICK™ SELF ADHERED

(800) 443-4272 www.genflex.com

MAXIMUM WARRANTY: 20 Years

ISSUE / REVISION DATE:

07/28/2023

NOT TO SCALE

DETAIL NO.

EZE-PS-P-07