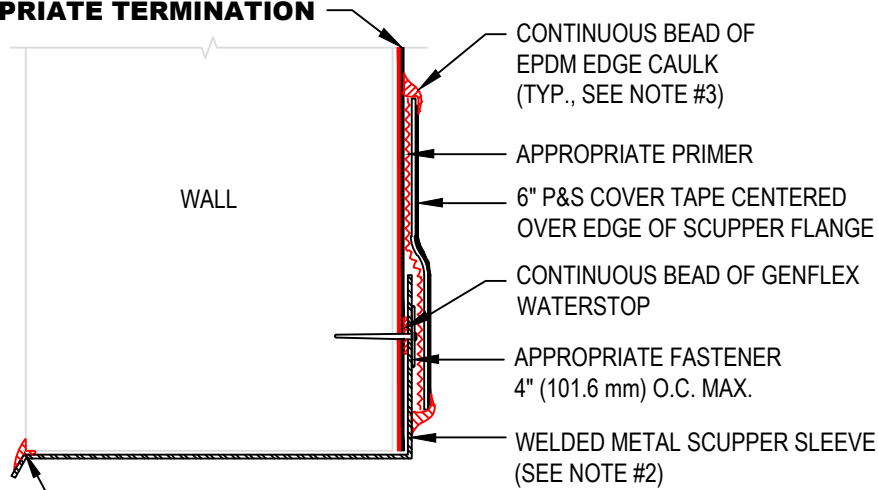


USE APPROPRIATE TERMINATION



CONTINUOUS BEAD OF EPDM EDGE CAULK (TYP., SEE NOTE #3)

APPROPRIATE PRIMER

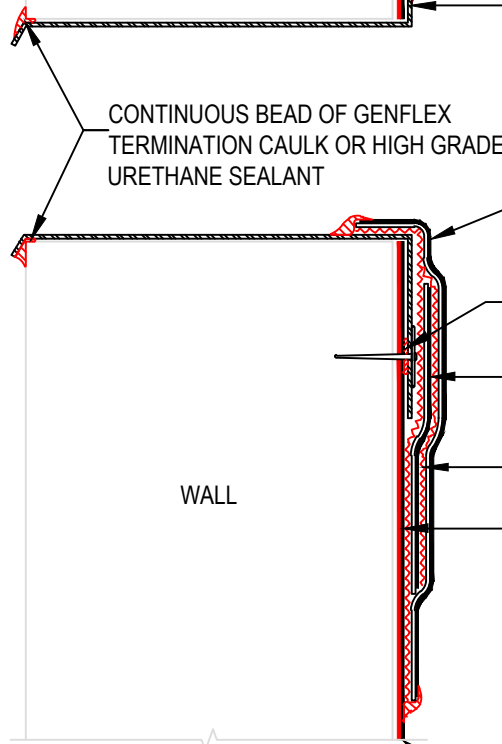
6" P&S COVER TAPE CENTERED OVER EDGE OF SCUPPER FLANGE

CONTINUOUS BEAD OF GENFLEX WATERSTOP

APPROPRIATE FASTENER 4" (101.6 mm) O.C. MAX.

WELDED METAL SCUPPER SLEEVE (SEE NOTE #2)

CONTINUOUS BEAD OF GENFLEX TERMINATION CAULK OR HIGH GRADE URETHANE SEALANT



9" PEEL & STICK FLASHING CENTERED OVER 6" PEEL & STICK COVER TAPE AT BASE OF SCUPPER ONLY

CONTINUOUS BEAD OF GENFLEX WATERSTOP

6" PEEL & STICK COVER TAPE CENTERED OVER EDGE OF SCUPPER FLANGE

APPROPRIATE PRIMER

EZ EPDM PEEL & STICK MEMBRANE

USE APPROPRIATE BASE TIE-IN

NOTE:

1. REFER TO GENFLEX™ WEBSITE FOR MOST CURRENT INFORMATION.
2. SCUPPER MUST BE WELDED METAL SLEEVE, ROUND ALL SHEET METAL FLANGE CORNERS.
3. APPLY EPDM EDGE CAULK AROUND ENTIRE PERIMETER OF P&S COVER TAPE AND FLASHING. REFER TO EZE-PS-LS-09 FOR SEAM EDGE TREATMENT.
4. APPROVED PRIMER REQUIRED ON ALL VERTICAL SURFACES.



OVERFLOW THRU-WALL SCUPPER (WELDED SLEEVE)

ACCEPTABLE SYSTEMS: EZ EPDM PEEL & STICK™ SELF ADHERED

GENFLEX: (800) 443-4272 www.genflex.com

MAXIMUM WARRANTY: 20 Years

ISSUE / REVISION DATE:
07/28/2023

NOT TO SCALE

DETAIL NO.
EZE-PS-S-02