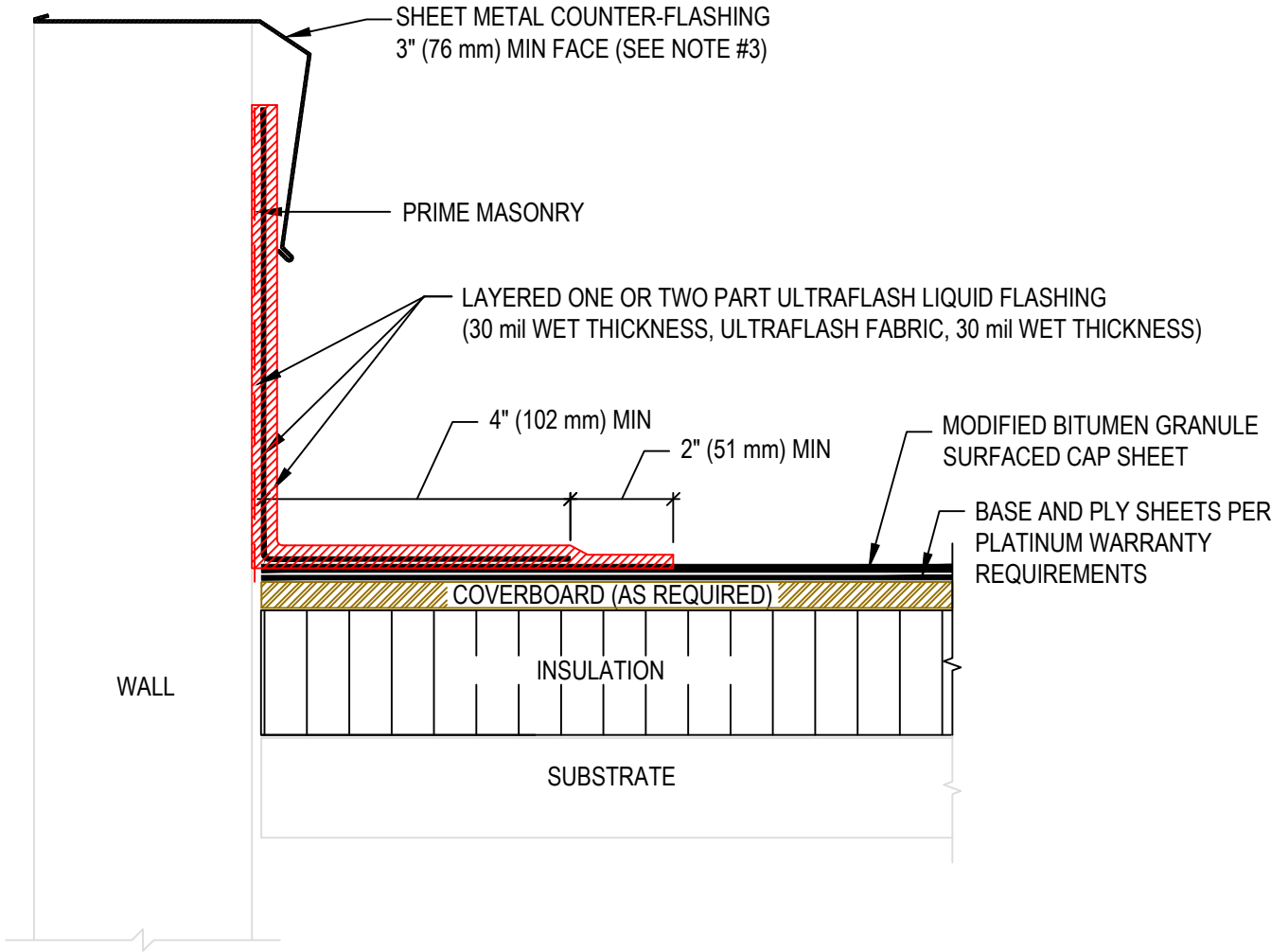


NOTE:

1. REFER TO WWW.GENFLEX.COM FOR MOST CURRENT INFORMATION.
2. THIS DETAIL SHOULD BE USED ONLY WHERE THE DECK IS SUPPORTED BY THE OUTSIDE WALL.
3. ALL SHEET METAL IS TO BE INSTALLED PER SMACNA GUIDELINES.

**TWO PART POURABLE
SEALER FOR USE SBS
MEMBRANES ONLY**



**ULTRAFLASH BASE FLASHING
FOR WALL-SUPPORTED DECK**

GENFLEX™

ACCEPTABLE SYSTEMS: **MODIFIED BITUMEN**

GENFLEX: (800) 443-4272 www.genflex.com

MAXIMUM WARRANTY: 20 Years

ISSUE / REVISION
DATE:

05/07/2025

NOT TO SCALE

DETAIL NO.

MB-BT-19