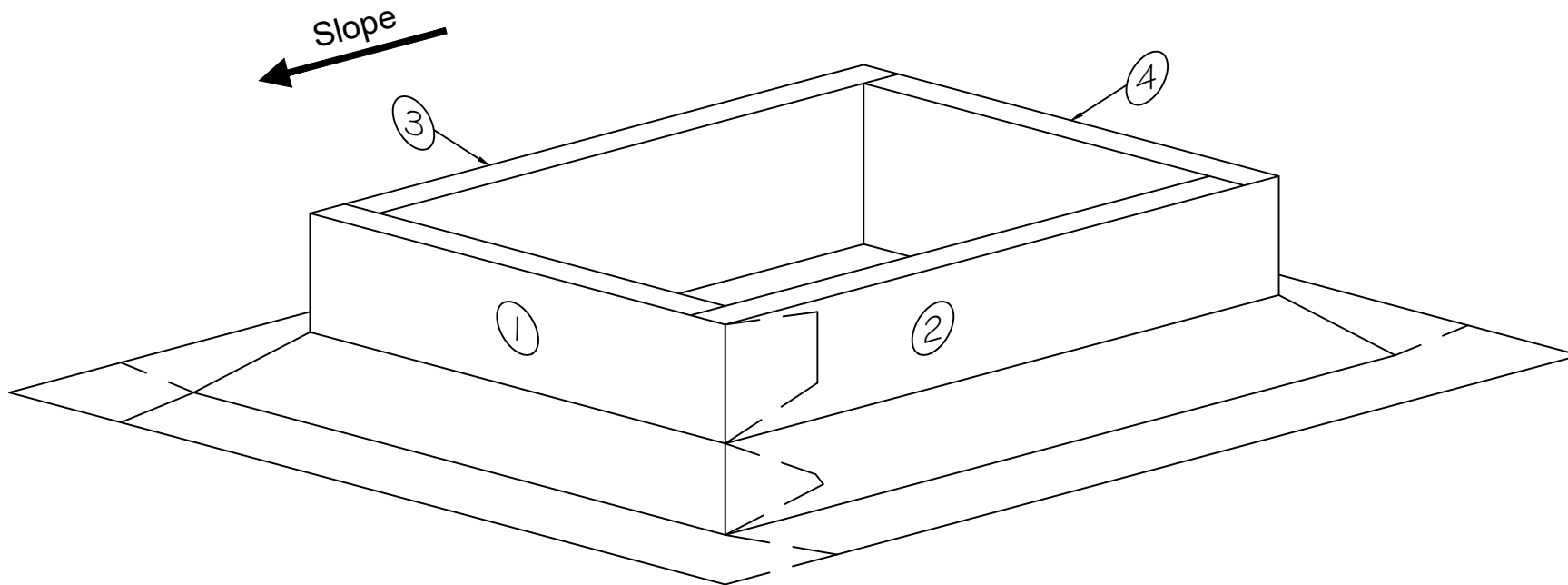


NOTE:

1. REFER TO WWW.GENFLEX.COM FOR MOST CURRENT INFORMATION.
2. CUT MEMBRANE AND WRAP CORNERS AS SHOWN.
3. INSTALL NOTCHED OR BOWTIE PATCHES AS SHOWN TO ENSURE WATER TIGHT CORNERS.
4. REFER TO DETAILS MB-LS-1, MB-LS-2 & MB-LS-3 FOR APPROPRIATE LAP SEALING OPTIONS.



OUTSIDE CORNER

GENFLEX™

ACCEPTABLE SYSTEMS: **MODIFIED BITUMEN**

GENFLEX: (800) 443-4272 www.genflex.com

MAXIMUM WARRANTY: 20 Years

ISSUE / REVISION
DATE:

05/07/2025

NOT TO SCALE

DETAIL NO.

MB-C-1