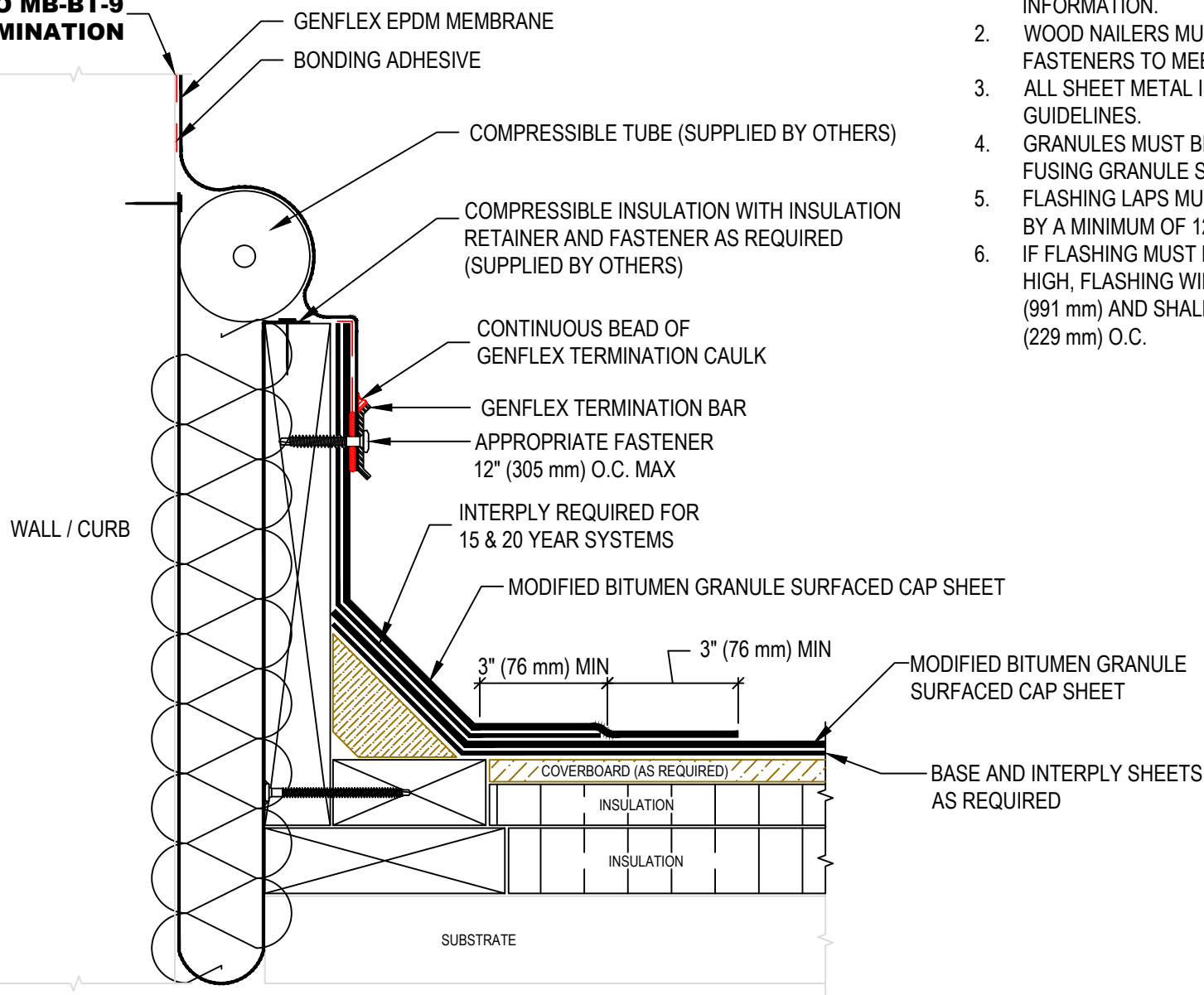


**REFER TO MB-BT-9
FOR TERMINATION**



NOTE:

1. REFER TO WWW.GENFLEX.COM FOR MOST CURRENT INFORMATION.
2. WOOD NAILERS MUST BE INSTALLED WITH SUITABLE FASTENERS TO MEET APPLICABLE BUILDING CODES.
3. ALL SHEET METAL IS TO BE INSTALLED PER SMACNA GUIDELINES.
4. GRANULES MUST BE EMBEDDED WHEN THERMALLY FUSING GRANULE SURFACED CAP SHEET.
5. FLASHING LAPS MUST BE OFFSET FROM FIELD LAPS BY A MINIMUM OF 12" (305 mm).
6. IF FLASHING MUST EXTEND ABOVE 24" (610 mm) HIGH, FLASHING WIDTH MUST NOT EXCEED 39" (991 mm) AND SHALL ATTACH IN SIDE LAPS AT 9" (229 mm) O.C.



**EXPANSION JOINT
WITH GENFLEX EPDM MEMBRANE**

GENFLEX™

ACCEPTABLE SYSTEMS: **MODIFIED BITUMEN**

GENFLEX: (800) 443-4272 www.genflex.com

MAXIMUM WARRANTY: 20 Years

ISSUE / REVISION
DATE:

05/07/2025

NOT TO SCALE

DETAIL NO.

MB-E-4