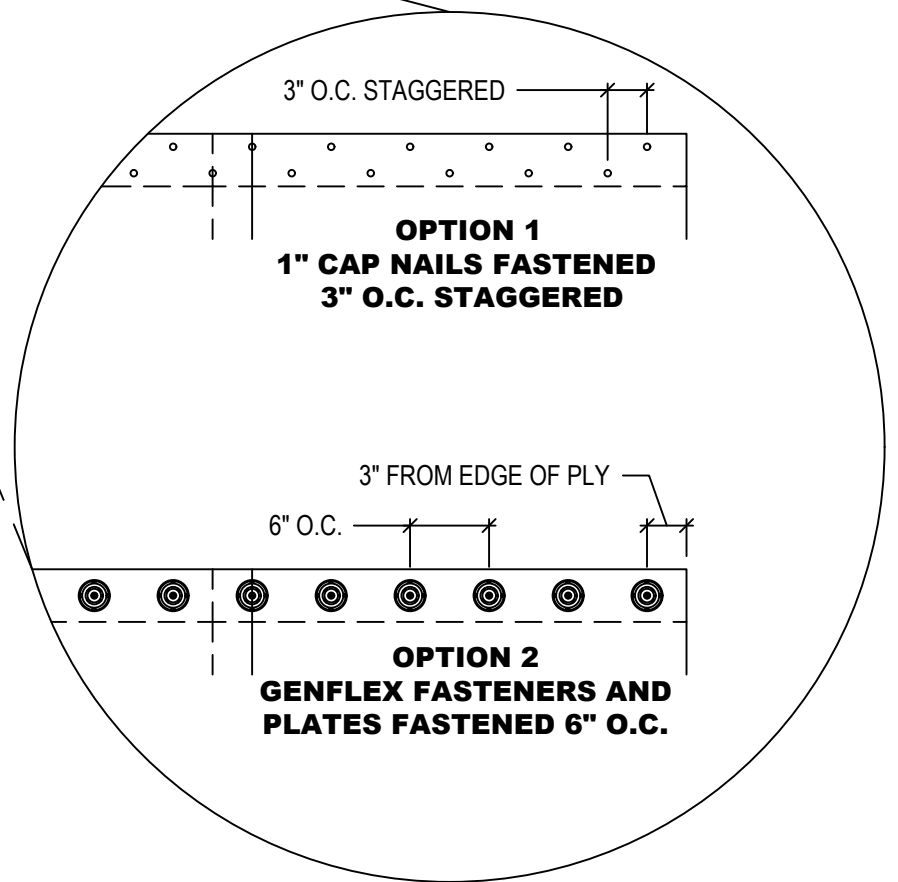
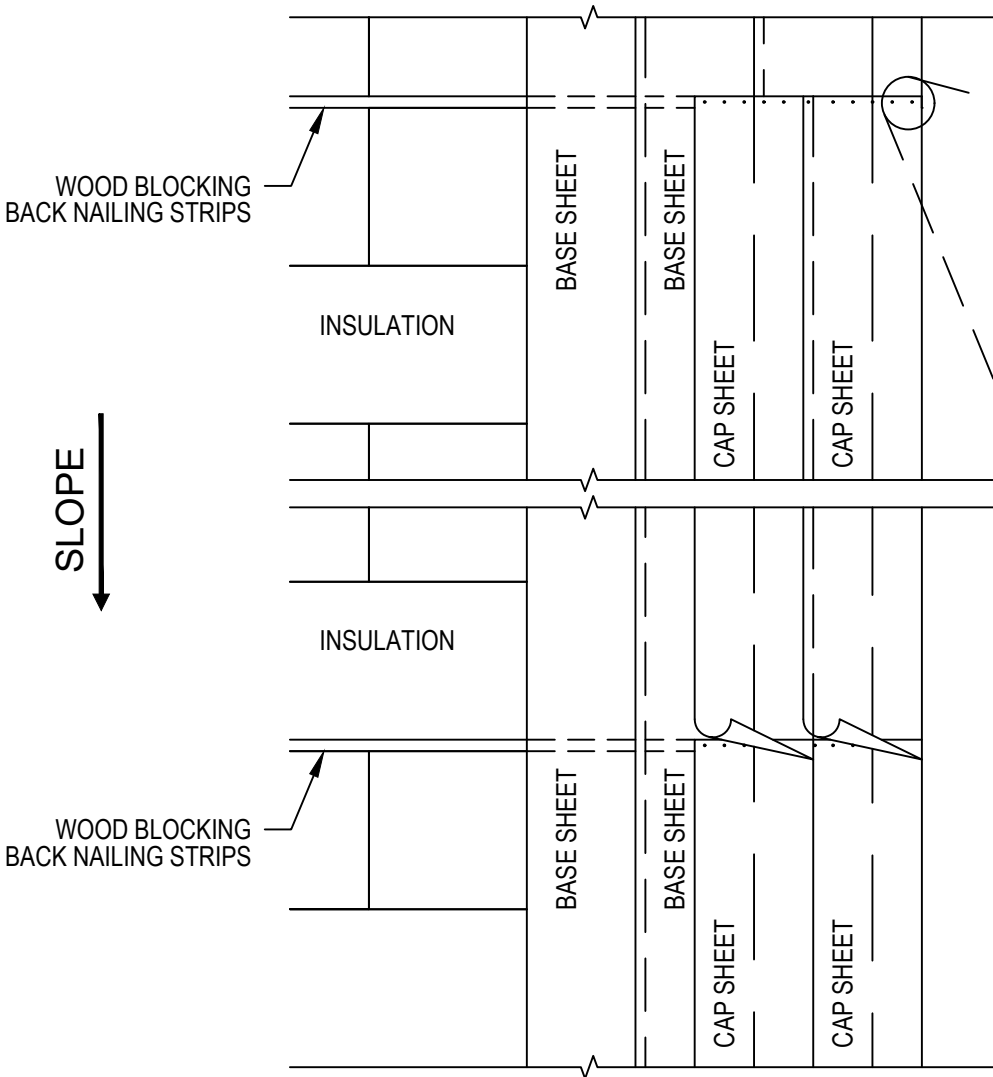


NOTE:

1. REFER TO WWW..GENFLEX.COM FOR MOST CURRENT INFORMATION.
2. BACK NAILING STRIPS ARE REQUIRED ON ALL SLOPES GREATER THAN 1:12 (8.3%).
3. REFER TO BACK NAILING REQUIREMENTS IN THE MODIFIED BITUMEN SYSTEM DESIGN GUIDE.
3. WOOD NAILERS MUST BE INSTALLED WITH SUITABLE FASTENERS TO MEET APPLICABLE BUILDING CODES.



	BACK NAILING		MAXIMUM WARRANTY: 20 Years	
			ISSUE / REVISION DATE: 05/08/2025	DETAIL NO. MB-LS-9
	GENFLEX™	ACCEPTABLE SYSTEMS: MODIFIED BITUMEN	NOT TO SCALE	