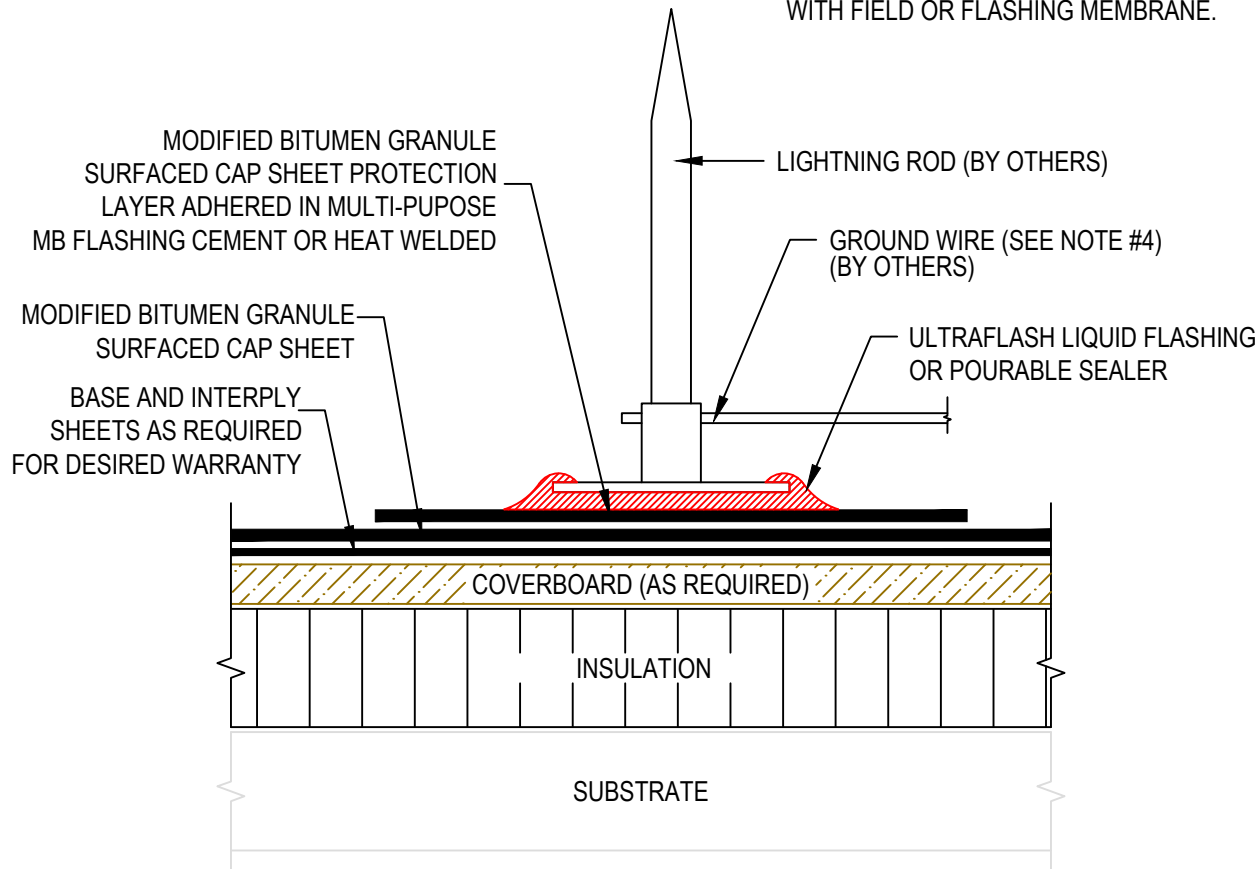


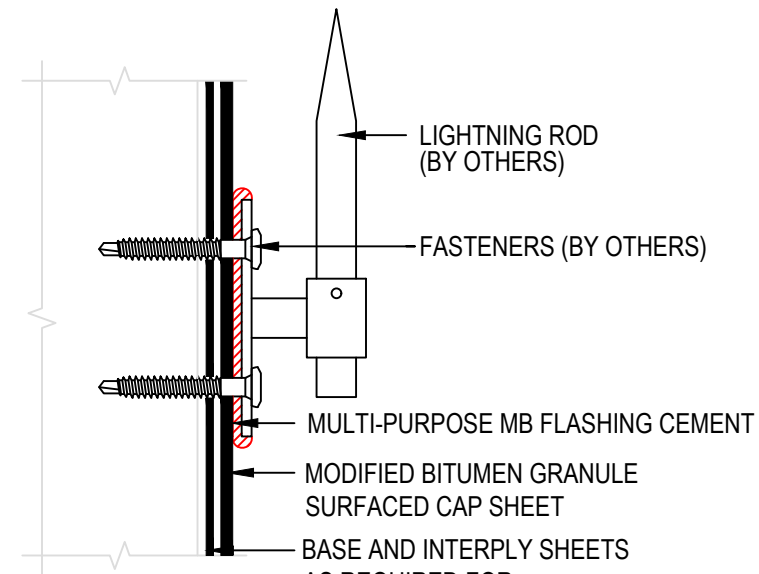
NOTE:

1. REFER TO WWW.GENFLEX.COM FOR MOST CURRENT INFORMATION.
2. GROUND WIRE SUPPORTS SHALL BE INSTALLED IN A SIMILAR MANNER TO LIGHTNING RODS.
3. A SUFFICIENT NUMBER OF GROUND WIRE STRIPS AND SUPPORTS MUST BE INSTALLED TO ENSURE THE GROUND WIRE DOES NOT COME IN CONTACT WITH FIELD OR FLASHING MEMBRANE.

4. IF THE GROUND WIRE COMES IN CONTACT WITH THE FIELD OR FLASHING MEMBRANE THEN AN ADDITIONAL PLY OF MODIFIED BITUMEN CAP SHEET WILL NEED TO BE INSTALLED UNDER THE GROUND WIRE TO PREVENT CONTACT WITH THE MEMBRANE.
5. GENFLEX ASSUMES NO RESPONSIBILITY FOR ATTACHMENT OF LIGHTNING RODS OR DAMAGE TO THE ROOF SYSTEM BECAUSE OF FAILURE OR DETACHMENT.



ROOF MOUNT



WALL MOUNT



LIGHTNING ROD

GENFLEX™

ACCEPTABLE SYSTEMS: **MODIFIED BITUMEN**

GENFLEX: (800) 443-4272 www.genflex.com

MAXIMUM WARRANTY: 20 Years

ISSUE / REVISION
DATE:

05/20/2025

NOT TO SCALE

DETAIL NO.

MB-M-7