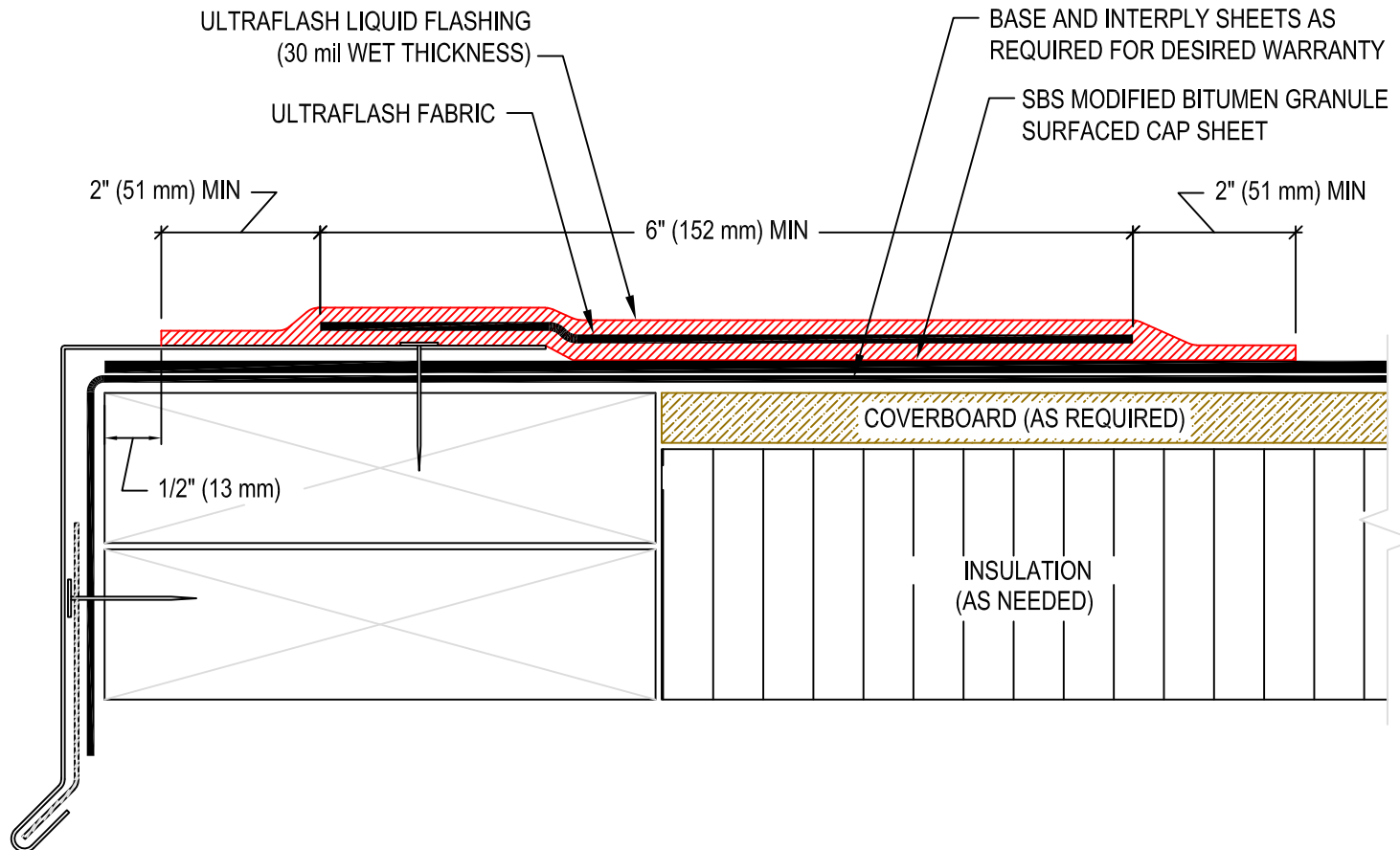


NOTE:

1. REFER TO WWW.GENFLEX.COM FOR MOST CURRENT INFORMATION.
2. THIS DETAIL SHOULD BE USED ONLY WHERE THE DECK IS SUPPORTED BY THE OUTSIDE WALL.
3. WOOD NAILERS MUST BE INSTALLED WITH SUITABLE FASTENERS TO MEET APPLICABLE BUILDING CODES.
4. ALL SHEET METAL IS TO BE INSTALLED PER SMACNA GUIDELINES.
5. PRIME METAL WITH ULTRAFLASH PRIMER BEFORE ADHERING FLASHING.
6. GRANULES MUST BE EMBEDDED WHEN THERMALLY FUSING GRANULE SURFACED CAP SHEET.



ULTRAFLASH DRIP EDGE

GENFLEX™

ACCEPTABLE SYSTEMS: **MODIFIED BITUMEN**

GENFLEX: (800) 443-4272 www.genflex.com

MAXIMUM WARRANTY: 20 Years

ISSUE / REVISION
DATE:

05/21/2025

NOT TO SCALE

DETAIL NO.

MB-RE-12