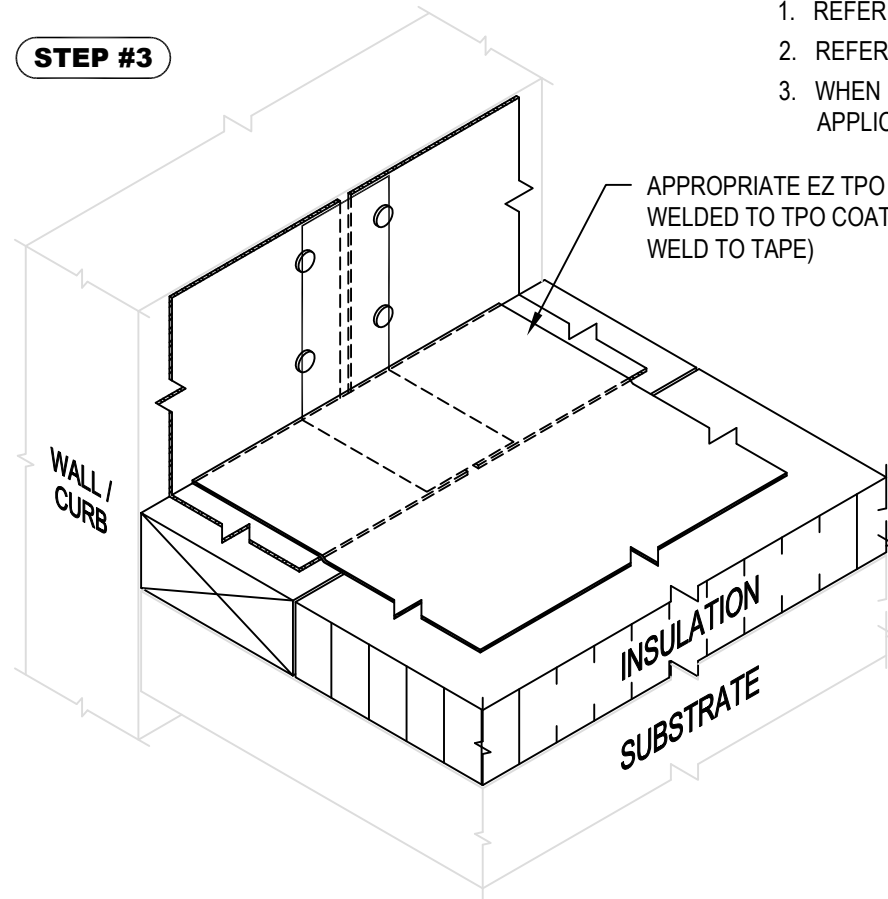


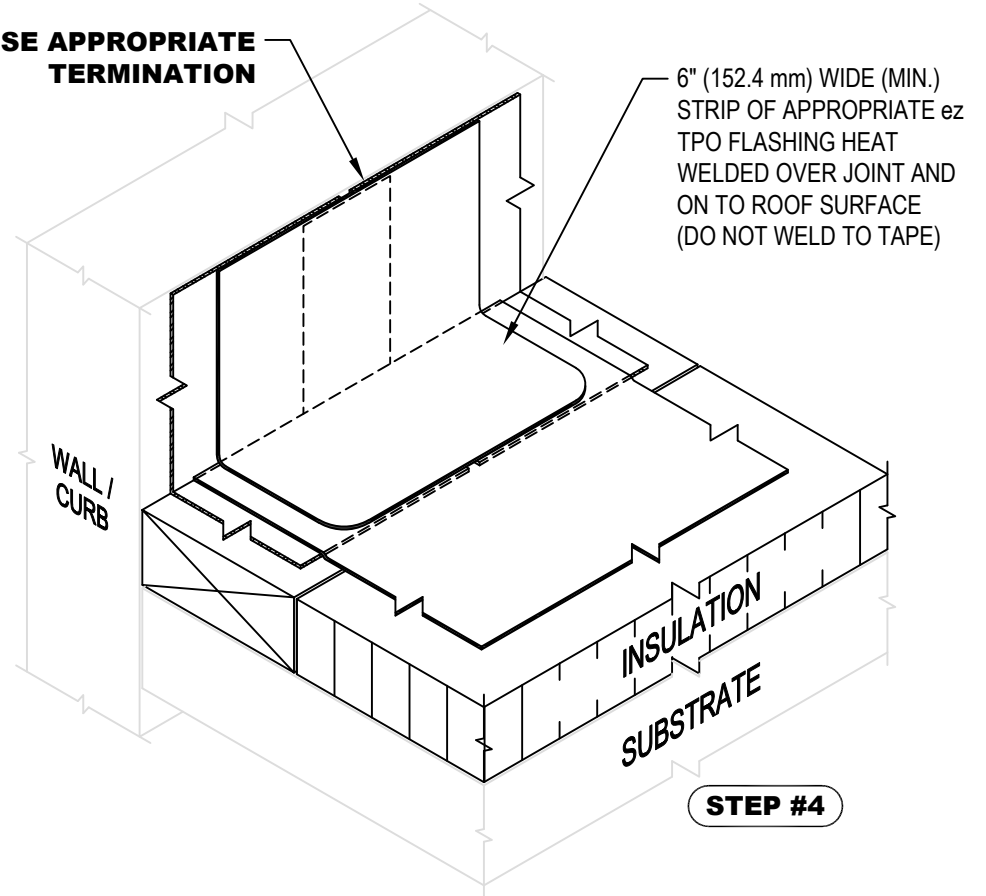
**STEP #3**



**NOTE:**

1. REFER TO THE GENFLEX™ WEBSITE FOR MOST CURRENT INFORMATION.
2. REFER TO DETAIL EZT-LS-1 OR EZT-LS-2 FOR WELD WIDTH.
3. WHEN REINFORCEMENT OF TPO MEMBRANE IS EXPOSED, REFER TO EZT-LS-14 FOR CUT EDGE SEALANT APPLICATION.

**USE APPROPRIATE TERMINATION**



**STEP #4**

**WARRANTY MEMBRANE REQUIREMENTS:**

**15-YEAR**  
TPO - 45 MIL  
**20-YEAR**  
TPO - 60 MIL



**TPO COATED METAL SPLICE  
INSTALLATION STEPS 3 & 4**

MATERIAL: EZ TPO

ACCEPTABLE SYSTEMS: ALL

MAXIMUM WARRANTY: 20 Years

ISSUE / REVISION  
DATE:

04/14/2026

DETAIL NO.

**EZT-BT-11B**

GENFLEX: (800) 443-4272 www.genflex.com

NOT TO SCALE