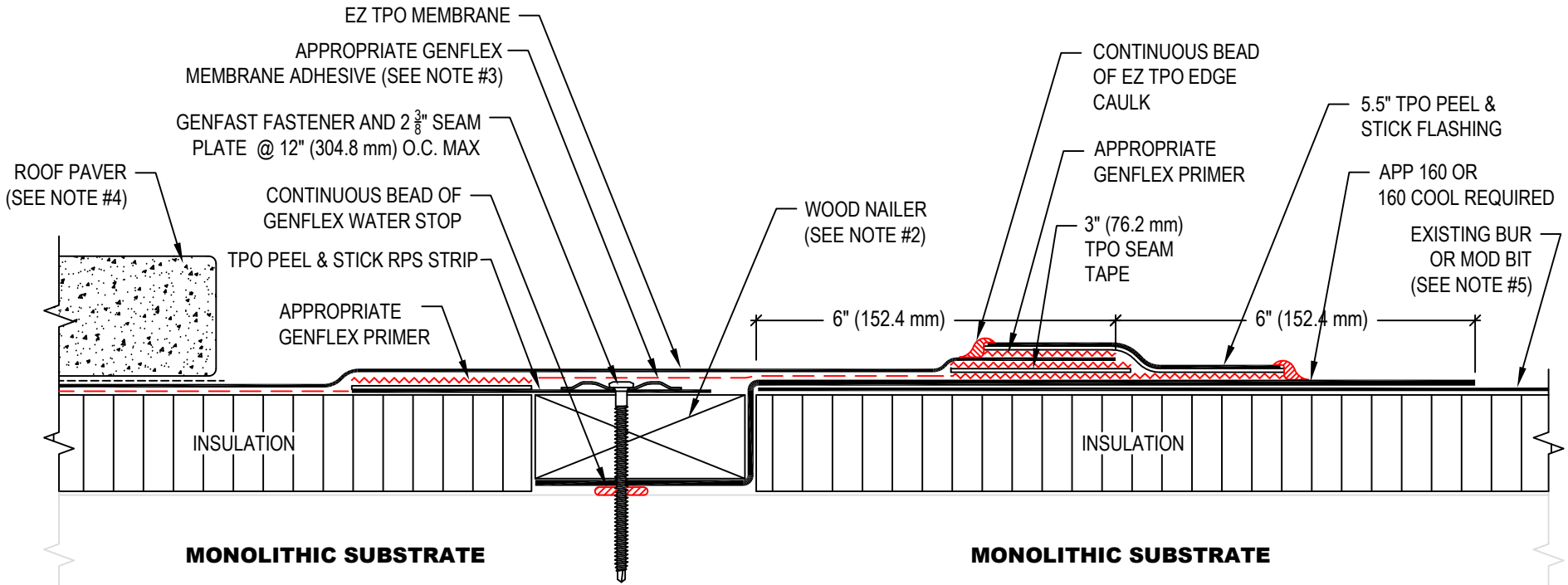


NOTE:

1. REFER TO THE GENFLEX™ WEBSITE FOR MOST CURRENT INFORMATION.
2. WOOD NAILER MUST BE INSTALLED TO MEET APPLICABLE BUILDING CODES.
3. GENFLEX MEMBRANE ADHESIVE REQUIRED BETWEEN MEMBRANE AND INSULATION FOR ADHERED SYSTEMS.
4. ACCEPTABLE ROOF PAVER - MIN 10 LB (4.5 KG) PER SQ. FT. INSTALLED OVER PROTECTION LAYER (REQUIRED FOR BALLASTED SYSTEMS).
5. GRAVEL SURFACING, IRREGULARITIES, MOISTURE, ETC. MUST BE REMOVED FROM EXISTING ASPHALT SYSTEM PRIOR TO TIE-IN. APP 160 OR 160 COOL MUST BE USED IF PEEL & STICK PRODUCTS ARE TO BE USED.
6. WHEN CHANGE IN ELEVATION OCCURS BETWEEN SYSTEMS, USE APPROPRIATE TAPERED INSULATION TO CREATE A SMOOTH TRANSITION.



EXTREME CARE SHOULD BE TAKEN WHEN TORCHING APP MEMBRANE NEAR FLAMMABLE MATERIALS

TIE-IN TO EXISTING ROOF SYSTEMS NOT WARRANTED BY GENFLEX

WARRANTY MEMBRANE REQUIREMENTS:
15-YEAR
 TPO - 45 MIL
20-YEAR
 TPO - 60 MIL



TIE-IN EZ TPO SYSTEM TO EXISTING ASPHALT SYSTEM (MONOLITHIC SUBSTRATE)	
MATERIAL: EZ TPO	ACCEPTABLE SYSTEMS: ALL

MAXIMUM WARRANTY: 20 Years	
ISSUE / REVISION DATE: 04/14/2026	DETAIL NO. EZT-BT-22
NOT TO SCALE	