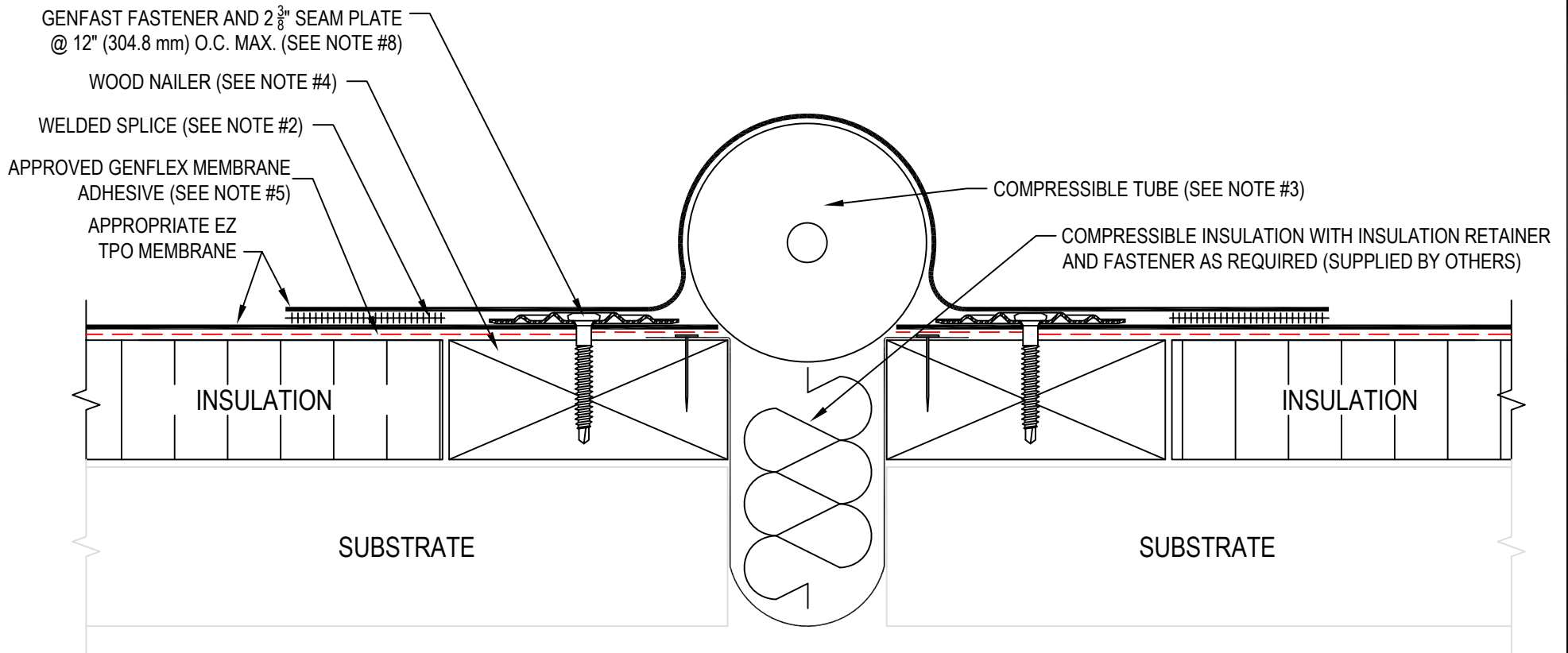


NOTE:

1. REFER TO THE GENFLEX™ WEBSITE FOR MOST CURRENT INFORMATION.
2. REFER TO DETAIL EZT-LS-01 OR EZT-LS-02 FOR WELD WIDTH.
3. COMPRESSIBLE TUBE (SUPPLIED BY OTHERS) DIAMETER MUST EXCEED THE DECK OPENING BY 50% MIN. OR DESIGNED MOVEMENT (WHICHEVER IS GREATER).
4. WOOD NAILER MUST BE INSTALLED TO MEET APPLICABLE BUILDING CODES .
5. APPROPRIATE MEMBRANE ADHESIVE REQUIRED BETWEEN MEMBRANE AND INSULATION FOR ADHERED SYSTEMS.
6. WHEN REINFORCEMENT OF TPO MEMBRANE IS EXPOSED, REFER TO EZT-LS-14 FOR CUT EDGE SEALANT APPLICATION.
7. REFER TO EZT-LS-15 FOR ADDITIONAL LAP SPLICE REQUIREMENTS.
8. MAXIMUM 10" (254 mm) LONG FASTENERS. (NOTE: WOOD BLOCKING MAY BE SUBSTITUTED FOR INSULATION TO REDUCE FASTENER LENGTH REQUIREMENTS).

WARRANTY MEMBRANE REQUIREMENTS:
15-YEAR
 TPO - 45 MIL
20-YEAR
 TPO - 60 MIL



EXPANSION JOINT (FIELD FABRICATED WITH WELDED SPLICE AND WOOD NAILER - ROOF TO ROOF)

MATERIAL: EZ TPO

ACCEPTABLE SYSTEMS: ALL

MAXIMUM WARRANTY: 20 Years

ISSUE / REVISION DATE:

04/20/2026

DETAIL NO.

EZT-E-04

GENFLEX: (800) 443-4272 www.genflex.com

NOT TO SCALE