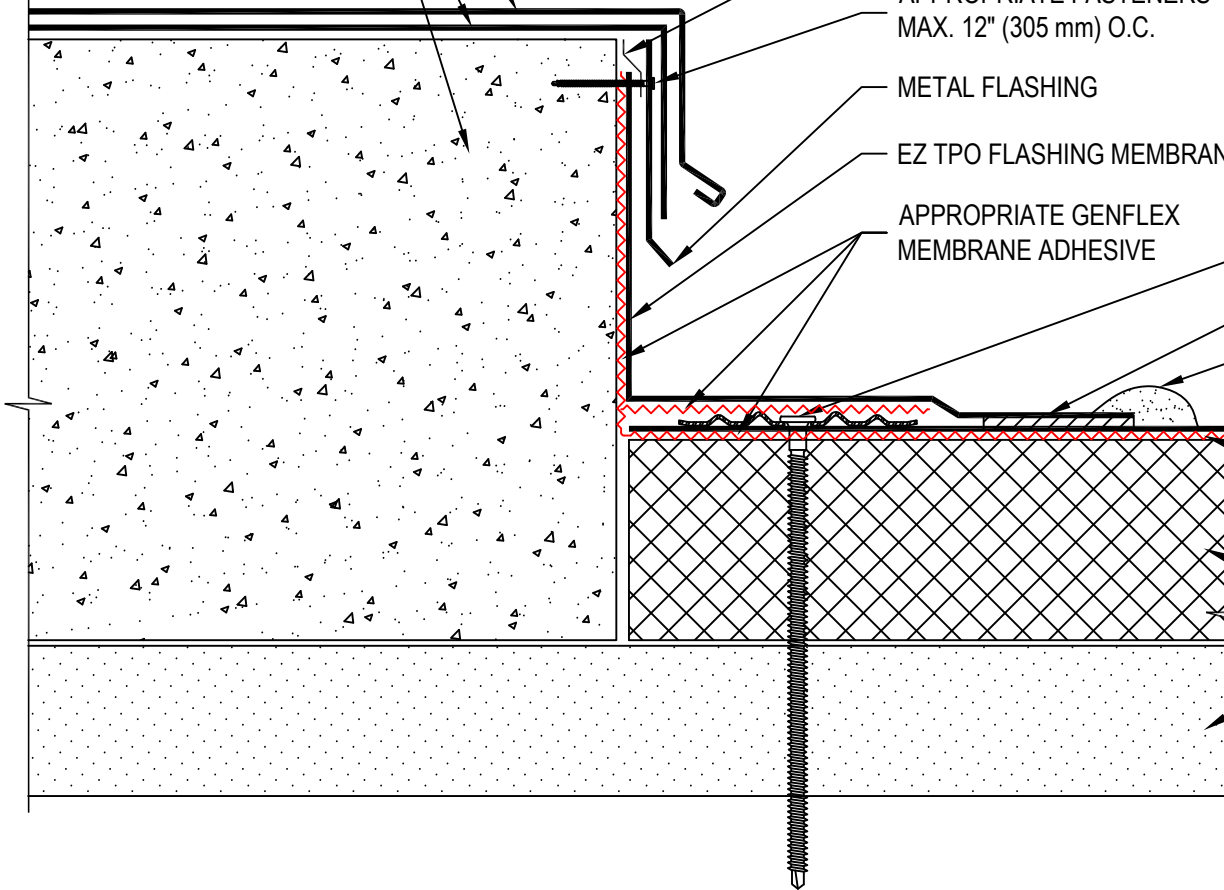


METAL COPING - ALL SEAMS
TO BE WELDED/SEALED
WATER TIGHT (BY OTHERS)
SELF ADHERED
FLASHING (BY OTHERS)
EQUIPMENT PAD (BY OTHERS)



NOTE:

1. REFER TO THE GENFLEX™ WEBSITE FOR MOST CURRENT INFORMATION.
2. WHEN SCRIM OF MEMBRANE IS EXPOSED, GENFLEX CUT EDGE SEALANT IS REQUIRED.
3. EQUIPMENT PAD AND ITS FLASHING COMPONENTS ARE NOT INCLUDED IN THE GENFLEX WARRANTY. WARRANTY COVERAGE STOPS AT THE BASE TIE IN AROUND THE PAD.
4. IT IS IMPORTANT THAT THE SELF ADHERED FLASHING NOT MAKE CONTACT WITH THE TPO MEMBRANE.

ALUMINUM TAPE
(BY OTHERS)

APPROPRIATE FASTENERS
MAX. 12" (305 mm) O.C.

METAL FLASHING

EZ TPO FLASHING MEMBRANE

APPROPRIATE GENFLEX
MEMBRANE ADHESIVE

APPROPRIATE BASE TIE-IN

MIN. 1 1/2" (38.1 mm) WELD
CUT EDGE SEALANT OR EDGE
CAULK

APPROPRIATE GENFLEX
MEMBRANE ADHESIVE

APPROPRIATE SUBSTRATE

APPROPRIATE
STRUCTURAL DECK

WARRANTY MEMBRANE REQUIREMENTS:

15-YEAR
TPO - 45 MIL
20-YEAR
TPO - 60 MIL



FLASHING AT EQUIPMENT PAD

MATERIAL: EZ TPO

ACCEPTABLE SYSTEMS: ALL

MAXIMUM WARRANTY: 20 Years

ISSUE / REVISION
DATE:

04/20/2026

DETAIL NO.

EZT-M-09

GENFLEX: (800) 443-4272 www.genflex.com

NOT TO SCALE