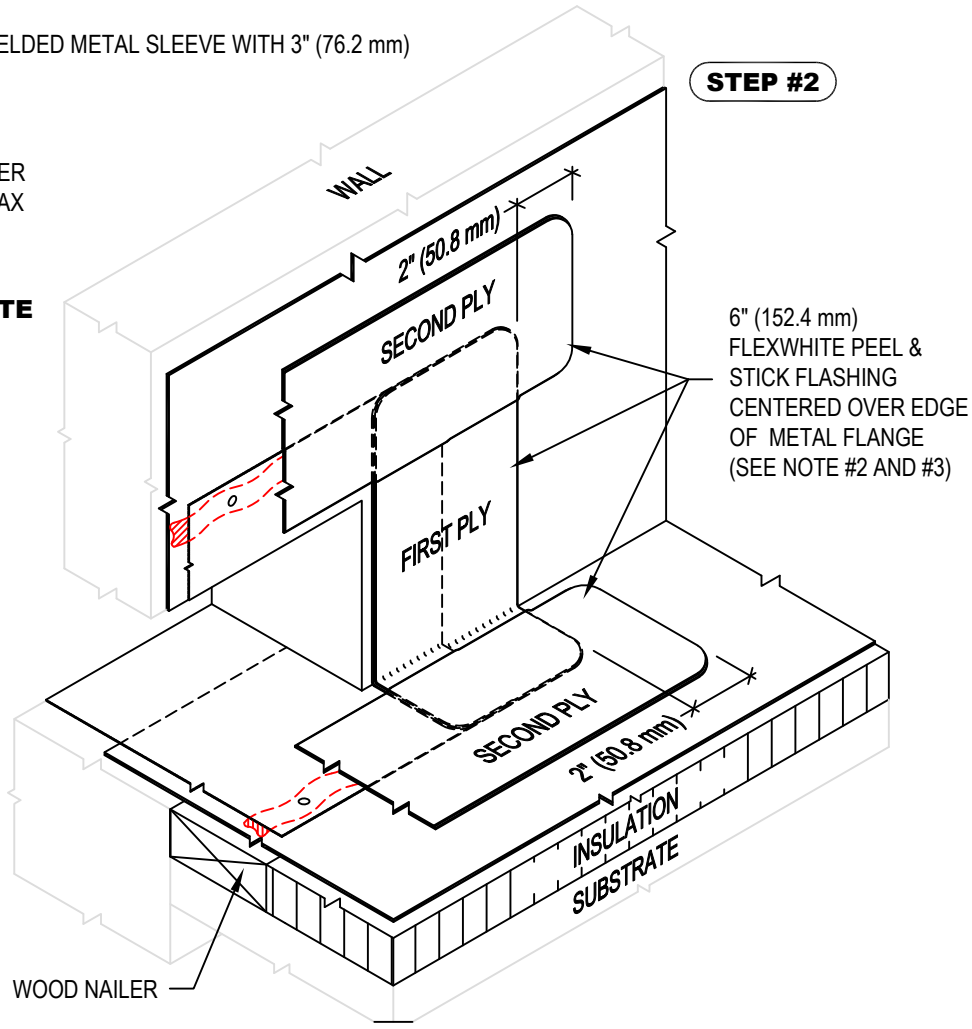
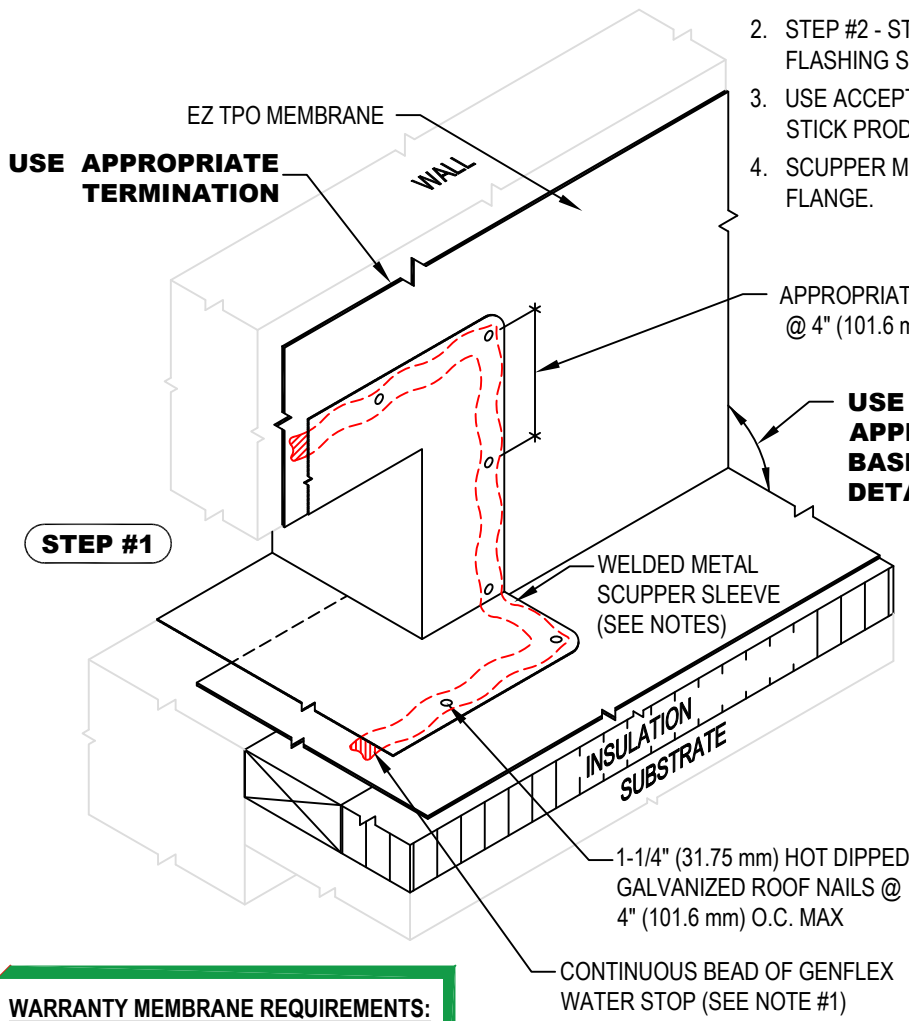


NOTE:

1. STEP #1 - APPLY CONTINUOUS BEAD OF GENFLEX WATER STOP BENEATH METAL, CENTERED UNDER FASTENERS. ROUND ALL CORNERS OF SCUPPER METAL AND SECURE SCUPPER FLANGE WITH APPROPRIATE FASTENERS.
2. STEP #2 - STRIP IN EXPOSED EDGES OF SCUPPER AS INDICATED WITH 6" (152.4 mm) FLEXWHITE PEEL & STICK FLASHING STARTING WITH SIDES OF SCUPPER.
3. USE ACCEPTABLE GENFLEX PRIMER TO CLEAN AND PRIME MATING SURFACES PRIOR TO INSTALLATION OF PEEL & STICK PRODUCTS.
4. SCUPPER MUST BE WELDED METAL SLEEVE WITH 3" (76.2 mm) FLANGE.



WARRANTY MEMBRANE REQUIREMENTS:
15-YEAR
 TPO - 45 MIL
20-YEAR
 TPO - 60 MIL



THRU-WALL SCUPPER (WELDED SLEEVE) INSTALLATION STEPS 1 & 2	
MATERIAL: EZ TPO	ACCEPTABLE SYSTEMS: ALL

MAXIMUM WARRANTY: 20 Years	
ISSUE / REVISION DATE: 04/20/2026	DETAIL NO. EZT-S-01A
NOT TO SCALE	