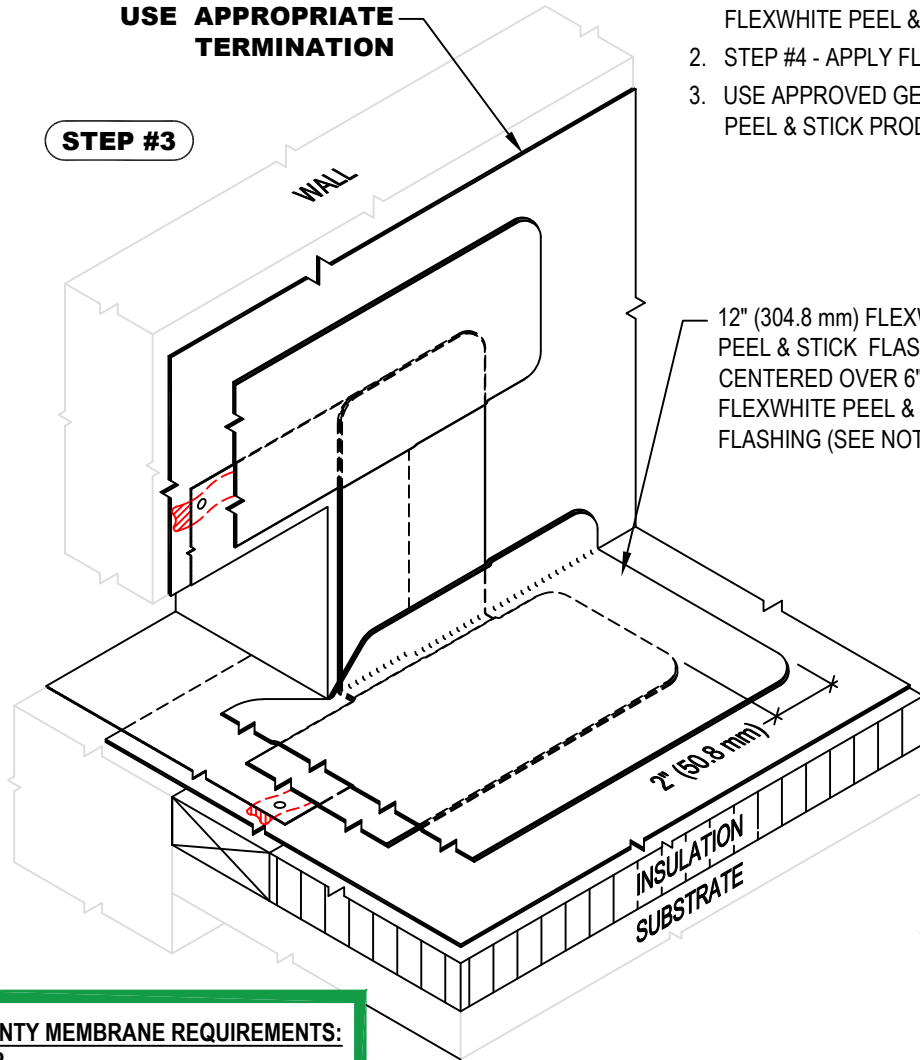


USE APPROPRIATE TERMINATION

STEP #3

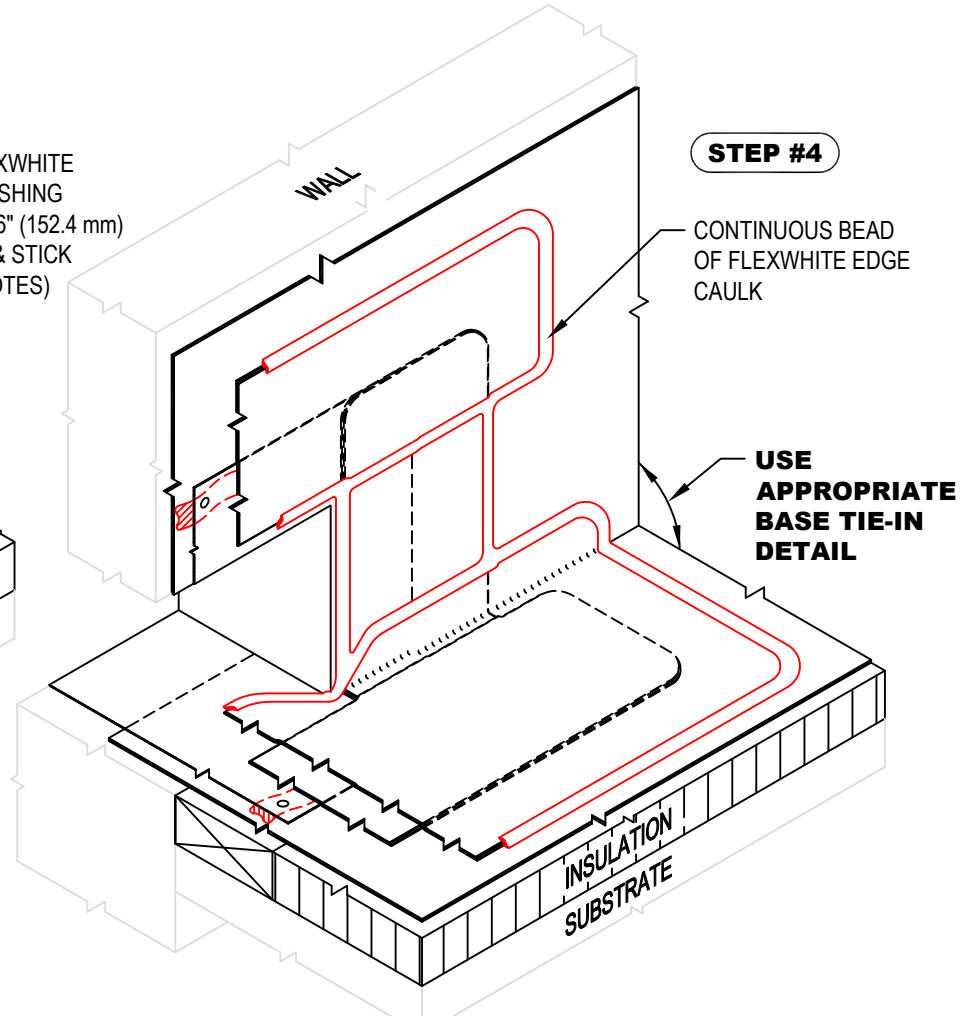


NOTE:

1. STEP #3 - CENTER STRIP OF 12" (304.8 mm) FLEXWHITE PEEL & STICK FLASHING OVER 6" (152.4 mm) FLEXWHITE PEEL & STICK FLASHING AT BASE OF SCUPPER AS SHOWN.
2. STEP #4 - APPLY FLEXWHITE EDGE CAULK TO PERIMETER OF FW PEEL & STICK FLASHING.
3. USE APPROVED GENFLEX PRIMER TO CLEAN AND PRIME TPO MATING SURFACES PRIOR TO INSTALLATION OF PEEL & STICK PRODUCTS.

12" (304.8 mm) FLEXWHITE PEEL & STICK FLASHING CENTERED OVER 6" (152.4 mm) FLEXWHITE PEEL & STICK FLASHING (SEE NOTES)

STEP #4



CONTINUOUS BEAD OF FLEXWHITE EDGE CAULK

USE APPROPRIATE BASE TIE-IN DETAIL

WARRANTY MEMBRANE REQUIREMENTS:

15-YEAR
TPO - 45 MIL
20-YEAR
TPO - 60 MIL



**THRU-WALL SCUPPER (WELDED SLEEVE)
INSTALLATION STEPS 3 & 4**

MATERIAL: EZ TPO

ACCEPTABLE SYSTEMS: ALL

GENFLEX: (800) 443-4272 www.genflex.com

MAXIMUM WARRANTY: 20 Years

ISSUE / REVISION DATE:

04/20/2026

NOT TO SCALE

DETAIL NO.

EZT-S-01B