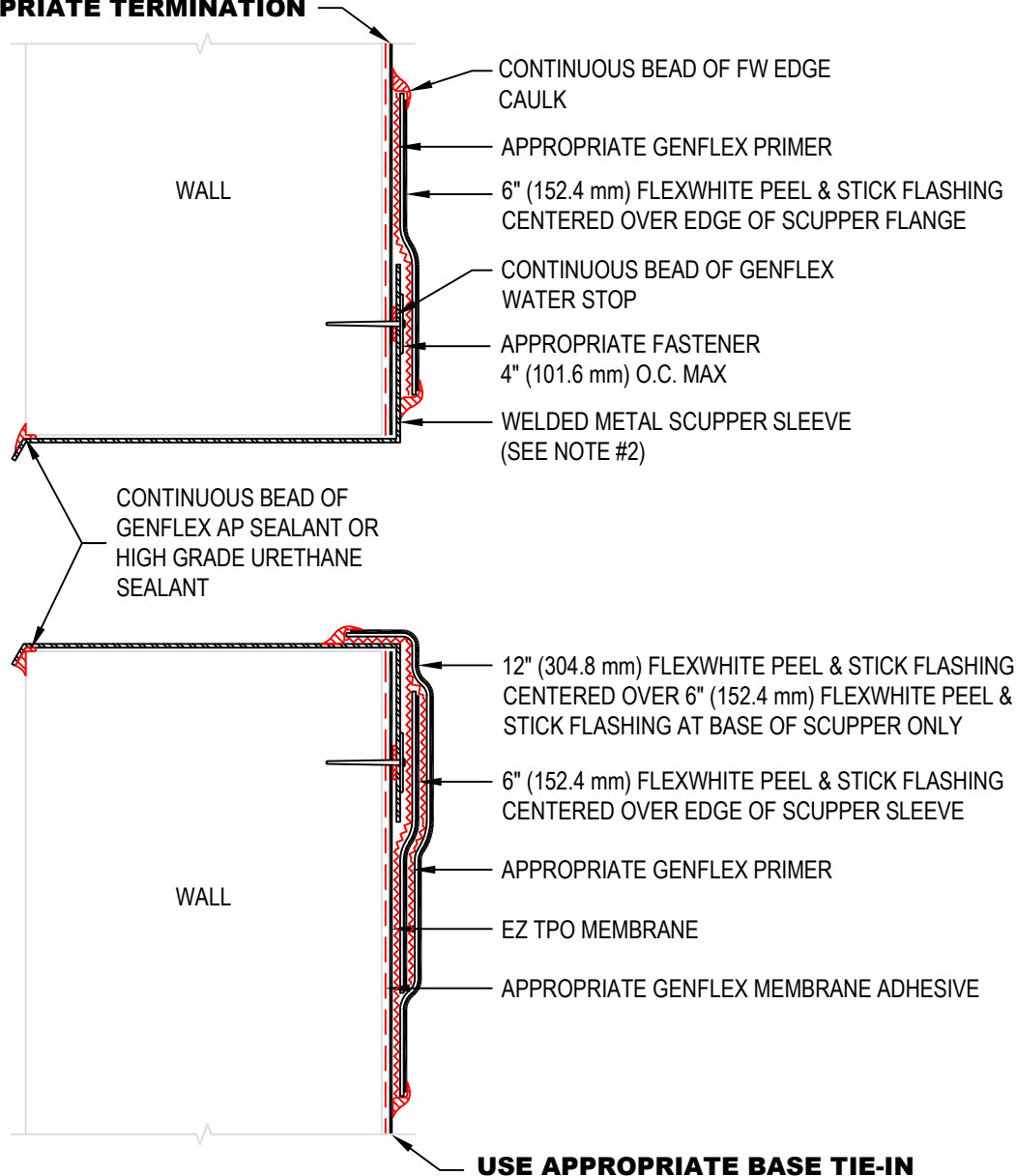


USE APPROPRIATE TERMINATION



NOTE:

1. REFER TO THE GENFLEX™ WEBSITE FOR THE MOST CURRENT INFORMATION.
2. SCUPPER MUST BE WELDED METAL SLEEVE WITH ROUNDED SHEET METAL FLANGE CORNERS.
3. SEE EZT-S-02A & EZT-S-02B FOR DETAILED INSTALLATION INSTRUCTIONS.

WARRANTY MEMBRANE REQUIREMENTS:

15-YEAR
TPO - 45 MIL
20-YEAR
TPO - 60 MIL



OVERFLOW THRU-WALL SCUPPER (WELDED SLEEVE)

MATERIAL: EZ TPO

ACCEPTABLE SYSTEMS: ALL

MAXIMUM WARRANTY: 20 Years

ISSUE / REVISION DATE:
04/20/2026

DETAIL NO.
EZT-S-02

GENFLEX: (800) 443-4272 www.genflex.com

NOT TO SCALE