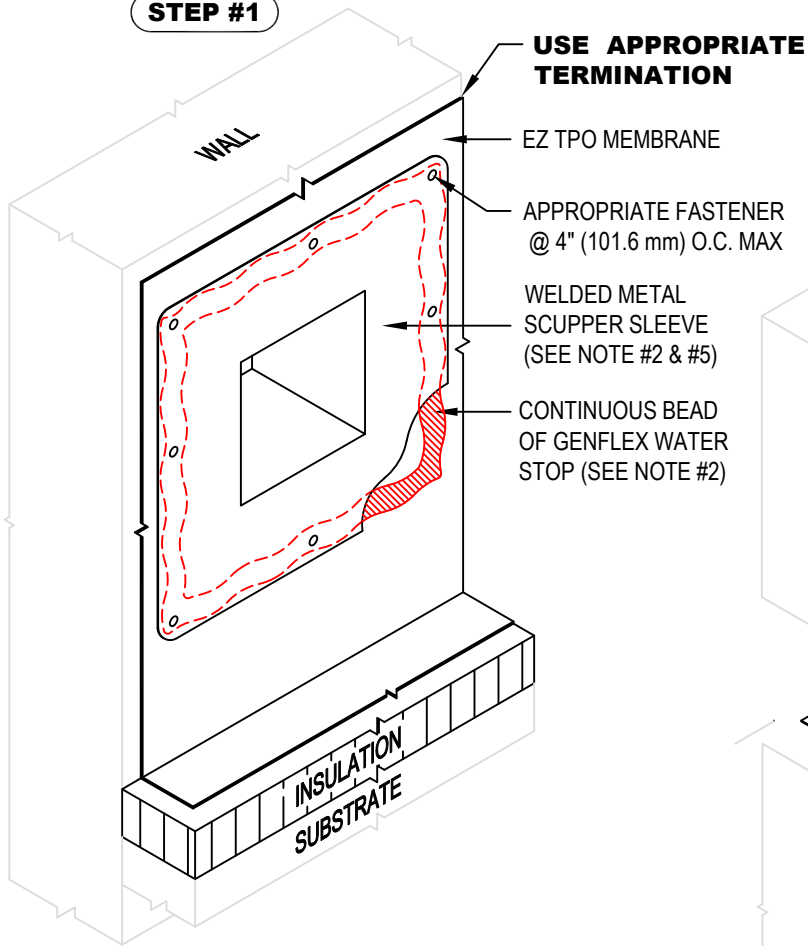
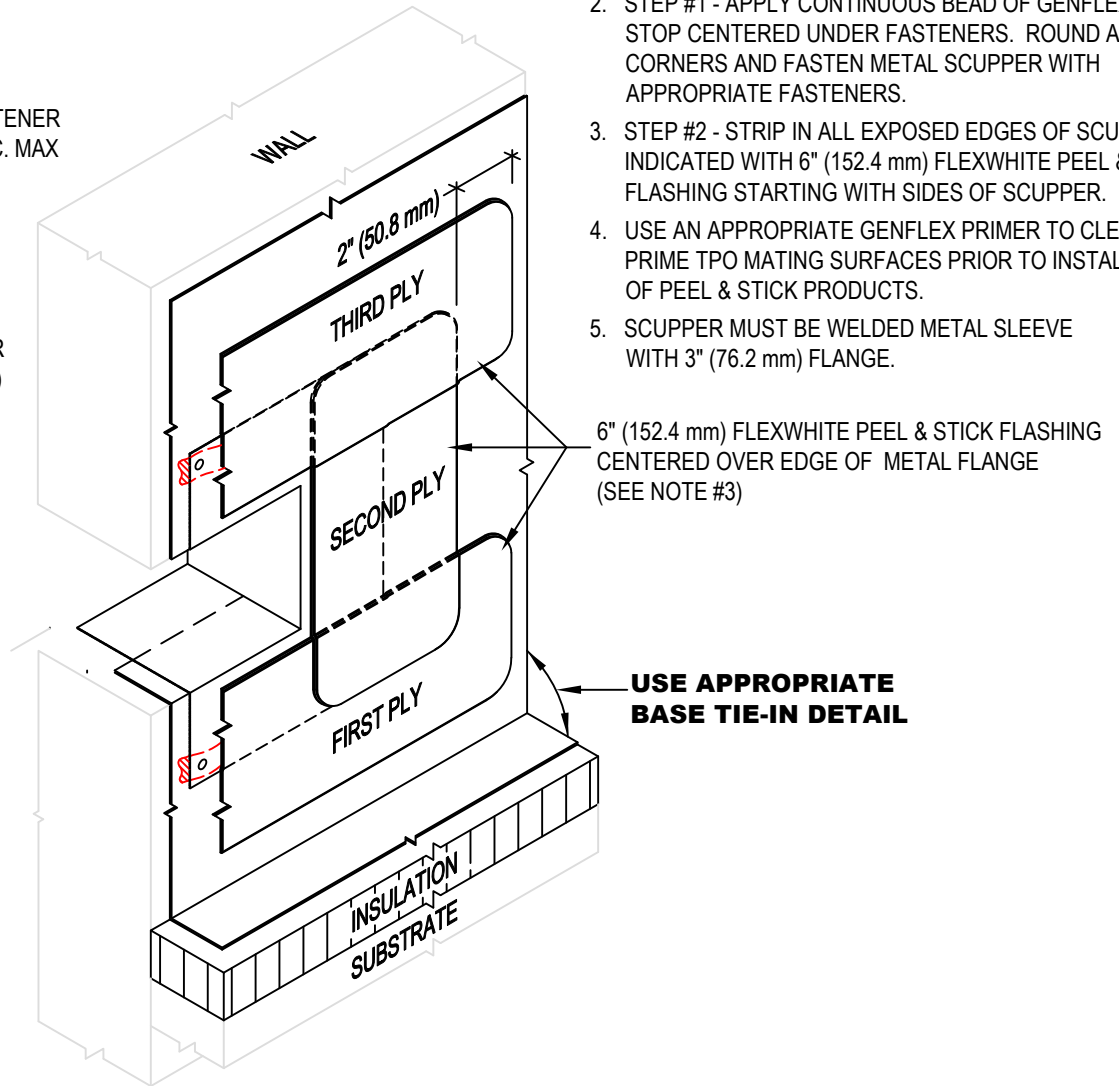


STEP #1



STEP #2



NOTE:

1. REFER TO THE GENFLEX™ WEBSITE FOR MOST CURRENT INFORMATION.
2. STEP #1 - APPLY CONTINUOUS BEAD OF GENFLEX WATER STOP CENTERED UNDER FASTENERS. ROUND ALL METAL CORNERS AND FASTEN METAL SCUPPER WITH APPROPRIATE FASTENERS.
3. STEP #2 - STRIP IN ALL EXPOSED EDGES OF SCUPPER AS INDICATED WITH 6" (152.4 mm) FLEXWHITE PEEL & STICK FLASHING STARTING WITH SIDES OF SCUPPER.
4. USE AN APPROPRIATE GENFLEX PRIMER TO CLEAN AND PRIME TPO MATING SURFACES PRIOR TO INSTALLATION OF PEEL & STICK PRODUCTS.
5. SCUPPER MUST BE WELDED METAL SLEEVE WITH 3" (76.2 mm) FLANGE.

WARRANTY MEMBRANE REQUIREMENTS:

15-YEAR
TPO - 45 MIL

20-YEAR
TPO - 60 MIL



**OVERFLOW THRU-WALL SCUPPER (WELDED SLEEVE)
INSTALLATION STEPS 1 & 2**

MATERIAL: EZ TPO

ACCEPTABLE SYSTEMS: ALL

MAXIMUM WARRANTY: 20 Years

ISSUE / REVISION DATE:

04/20/2026

DETAIL NO.

EZT-S-02A

NOT TO SCALE

GENFLEX: (800) 443-4272 www.genflex.com