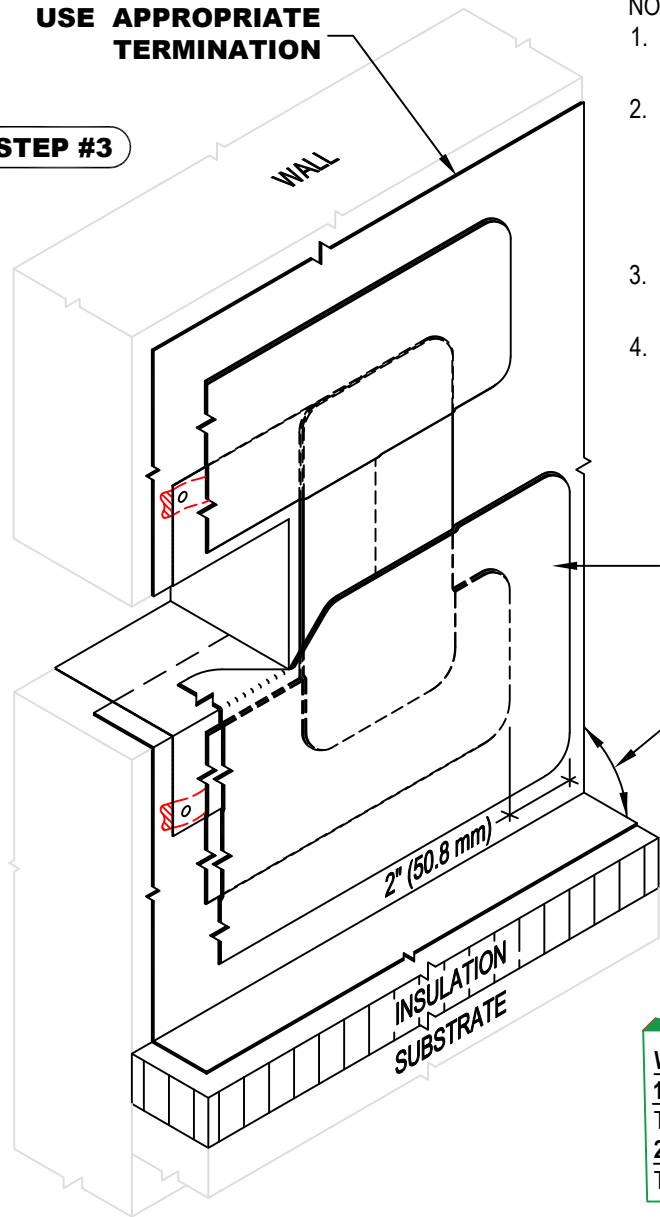


USE APPROPRIATE TERMINATION

STEP #3



NOTE:

1. REFER TO THE GENFLEX™ WEBSITE FOR MOST CURRENT INFORMATION.
2. STEP #3 - CENTER STRIP OF 12" (304.8 mm) FLEXWHITE PEEL & STICK FLASHING OVER 6" (152.4 mm) FLEXWHITE PEEL & STICK FLASHING AT BASE OF SCUPPER AS SHOWN.
3. STEP #4 - APPLY FW EDGE CAULK TO PERIMETER OF PEEL & STICK FLASHING.
4. USE AN APPROPRIATE GENFLEX PRIMER TO CLEAN AND PRIME TPO MATING SURFACES PRIOR TO INSTALLATION OF PEEL & STICK PRODUCTS.

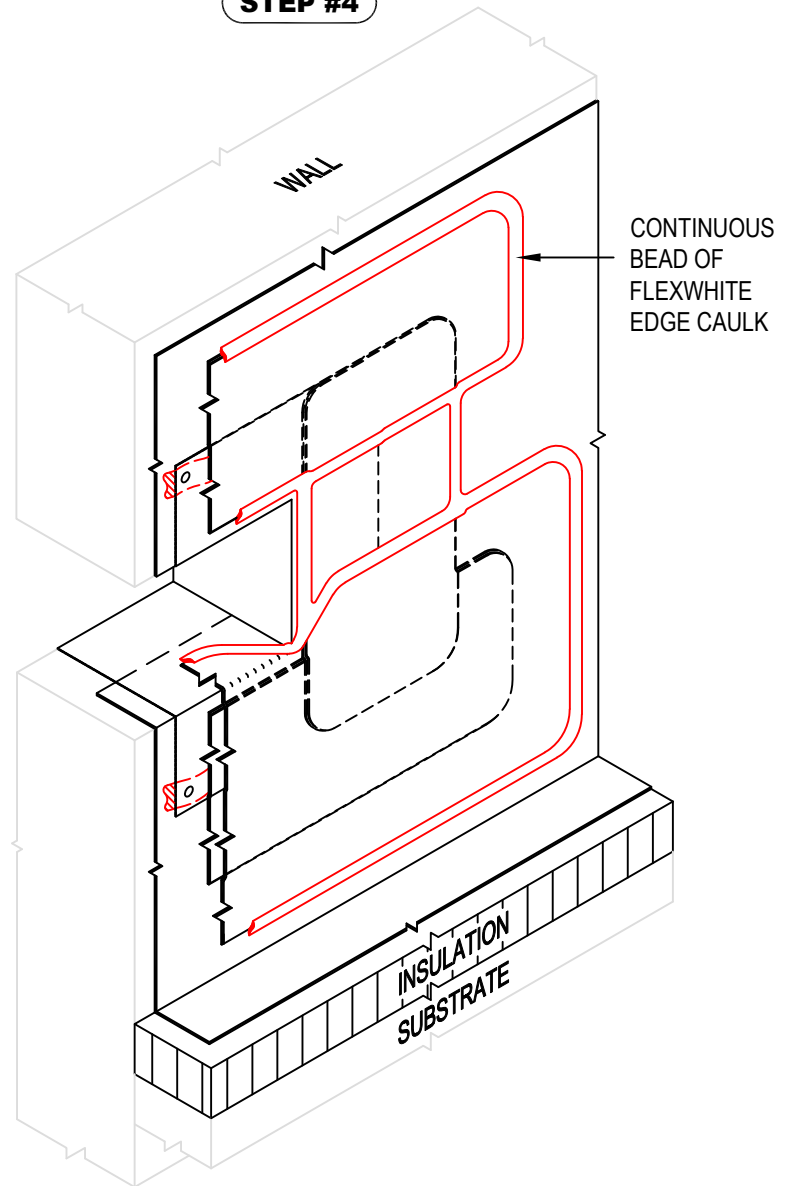
12" (304.8 mm) FLEXWHITE PEEL & STICK FLASHING CENTERED OVER 6" (152.4 mm) FLEXWHITE PEEL & STICK FLASHING (SEE NOTE #2)

USE APPROPRIATE BASE TIE-IN DETAIL

WARRANTY MEMBRANE REQUIREMENTS:

15-YEAR
TPO - 45 MIL
20-YEAR
TPO - 60 MIL

STEP #4



**OVERFLOW THRU-WALL SCUPPER (WELDED SLEEVE)
INSTALLATION STEPS 3 & 4**

MATERIAL: EZ TPO

ACCEPTABLE SYSTEMS: ALL

MAXIMUM WARRANTY: 20 Years

ISSUE / REVISION DATE:
04/20/2026

DETAIL NO.
EZT-S-02B

NOT TO SCALE

GENFLEX: (800) 443-4272 www.genflex.com