

WARRANTY MEMBRANE REQUIREMENTS:

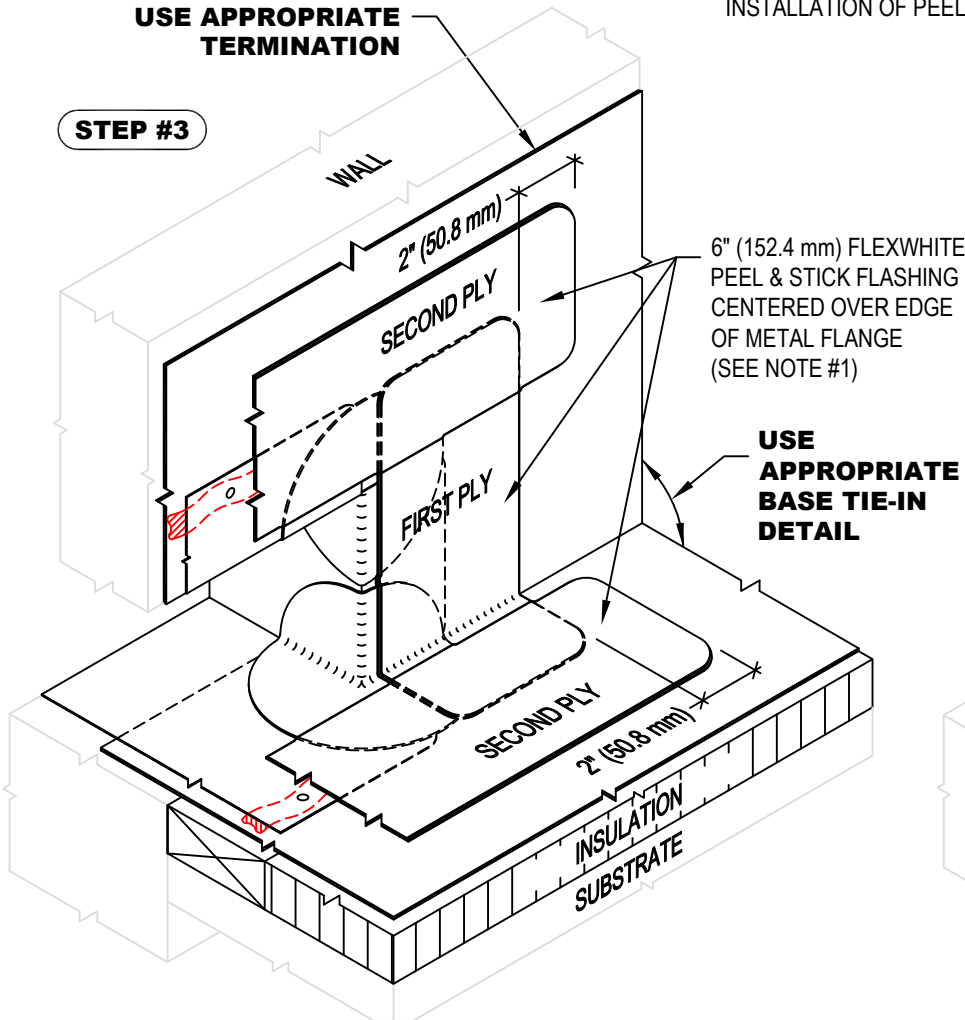
15-YEAR
TPO - 45 MIL
20-YEAR
TPO - 60 MIL

NOTE:

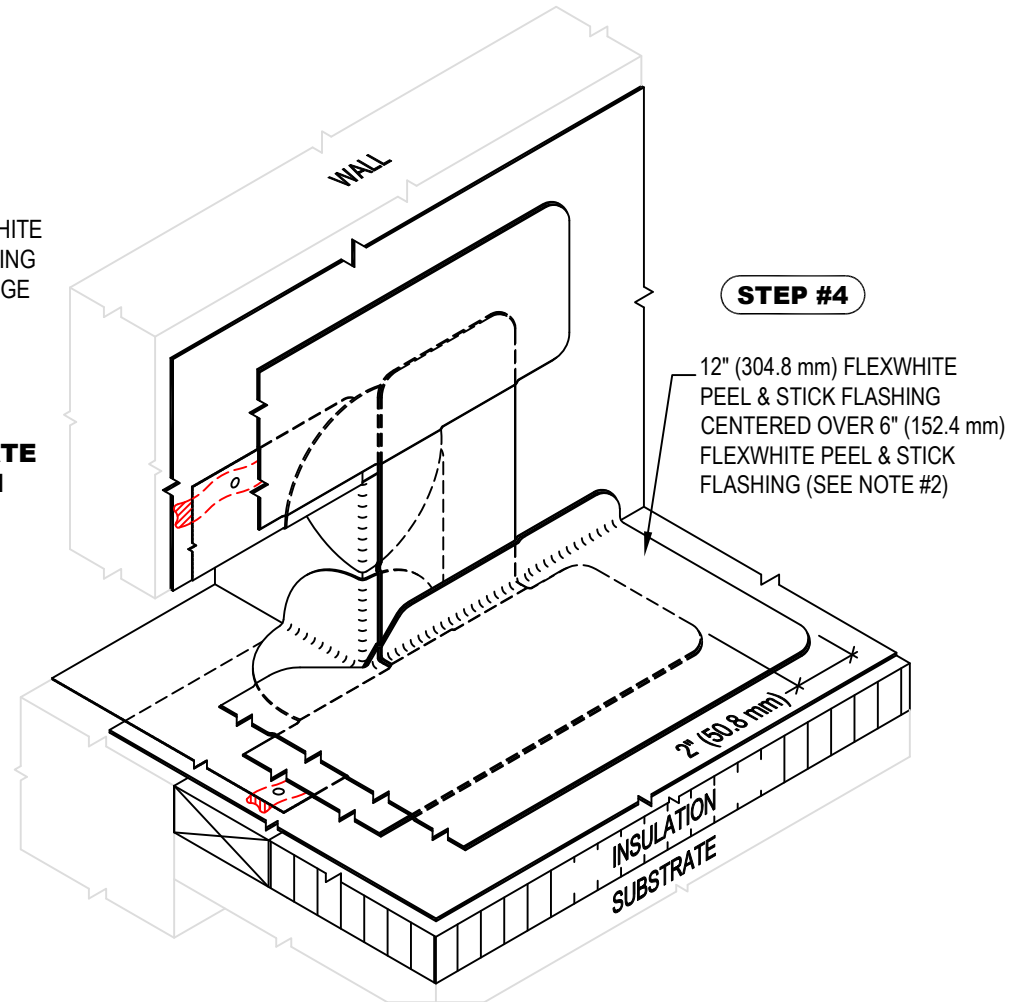
1. STEP #3 - STRIP IN ALL EXPOSED EDGES OF SCUPPER AS INDICATED WITH 6" (152.4 mm) FLEXWHITE PEEL & STICK FLASHING STARTING AT SIDES OF SCUPPER.
2. STEP #4 - CENTER STRIP OF 12" FLEXWHITE PEEL & STICK FLASHING OVER 6" (152.4 mm) FLEXWHITE PEEL & STICK FLASHING AT BASE OF SCUPPER AS SHOWN.
3. USE AN APPROPRIATE GENFLEX PRIMER TO CLEAN AND PRIME TPO MATING SURFACES PRIOR TO INSTALLATION OF PEEL & STICK PRODUCTS.

USE APPROPRIATE TERMINATION

STEP #3



STEP #4



**THRU-WALL SCUPPER (NON-WELDED SLEEVE)
INSTALLATION STEPS 3 & 4**

MATERIAL: EZ TPO

ACCEPTABLE SYSTEMS: ALL

MAXIMUM WARRANTY: 20 Years

ISSUE / REVISION DATE:
04/20/2026

DETAIL NO.

EZT-S-03B

NOT TO SCALE

GENFLEX: (800) 443-4272 www.genflex.com