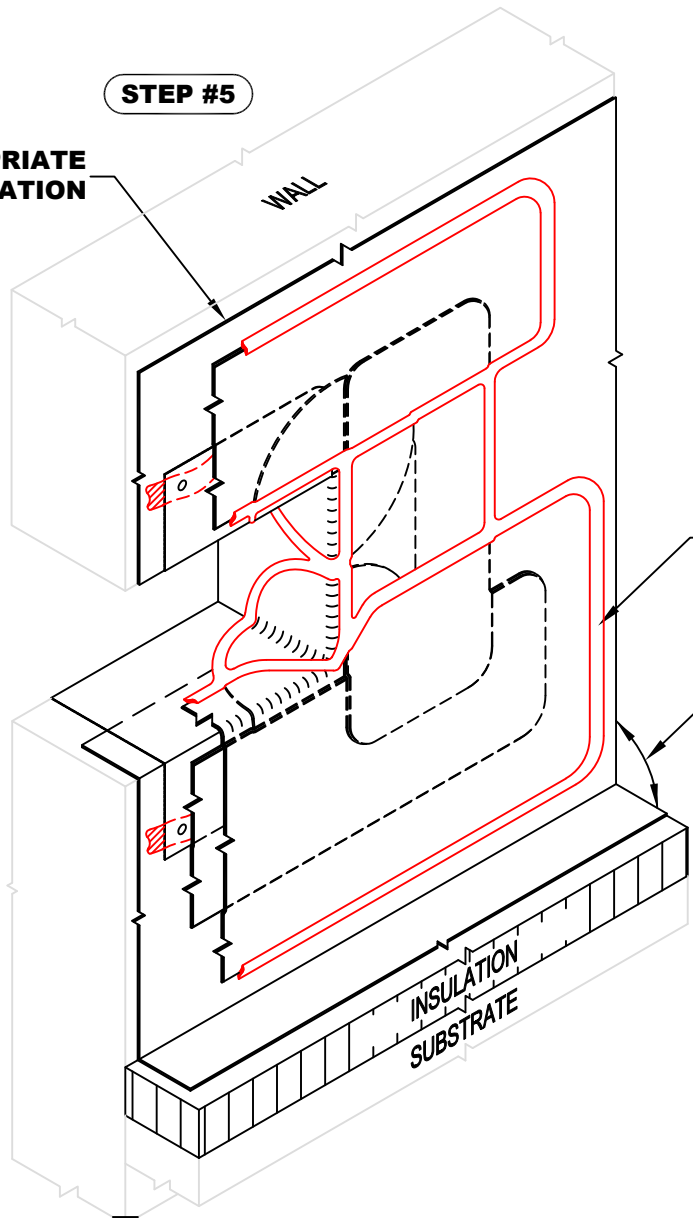


**STEP #5**  
**USE APPROPRIATE  
 TERMINATION**



CONTINUOUS BEAD OF FLEX  
 WHITE EDGE CAULK

**USE APPROPRIATE  
 BASE TIE-IN DETAIL**

- NOTE:
1. REFER TO THE GENFLEX™ WEBSITE FOR THE MOST CURRENT INFORMATION.
  2. STEP # 5 - APPLY FLEX WHITE EDGE CAULK TO PERIMETER OF FLEXWHITE FLASHING.

**WARRANTY MEMBRANE REQUIREMENTS:**

**15-YEAR**  
 TPO - 45 MIL  
**20-YEAR**  
 TPO - 60 MIL



**OVERFLOW THRU-WALL SCUPPER (NON-WELDED SLEEVE)  
 INSTALLATION STEP 5**

MATERIAL: EZ TPO

ACCEPTABLE SYSTEMS: ALL

MAXIMUM WARRANTY: 20 Years

ISSUE / REVISION  
 DATE:

04/20/2026

DETAIL NO.

**EZT-S-04C**

GENFLEX: (800) 443-4272 www.genflex.com

NOT TO SCALE